



# The Intertwine Alliance

*Where Leaders Find Common Ground*



HIKE  
.....  
BIKE  
.....  
FLY A KITE





# The Basics

- Launched in 2007
- Incorporated as 501(c)3 in 2011
- 4 FTE ~ \$300,000 annual budget
- 112 partners
- Primarily funded by the partners

# The Intertwine Alliance





# Our Scope

- Health and Nature
- Equity
- Public Engagement
- Education
- Conservation
- Active Transportation
- Urban Forestry
- Parks
- Ecosystem Services
- Economic Development
- Trails



Collective Impact is the commitment of a group of actors from different sectors to a common agenda for solving a complex social or environmental problem.



# ci Elements

- Common agenda
- Shared measurement
- Mutually reinforcing activities
- Continuous communication
- Backbone organization



# Doing Business a New Way





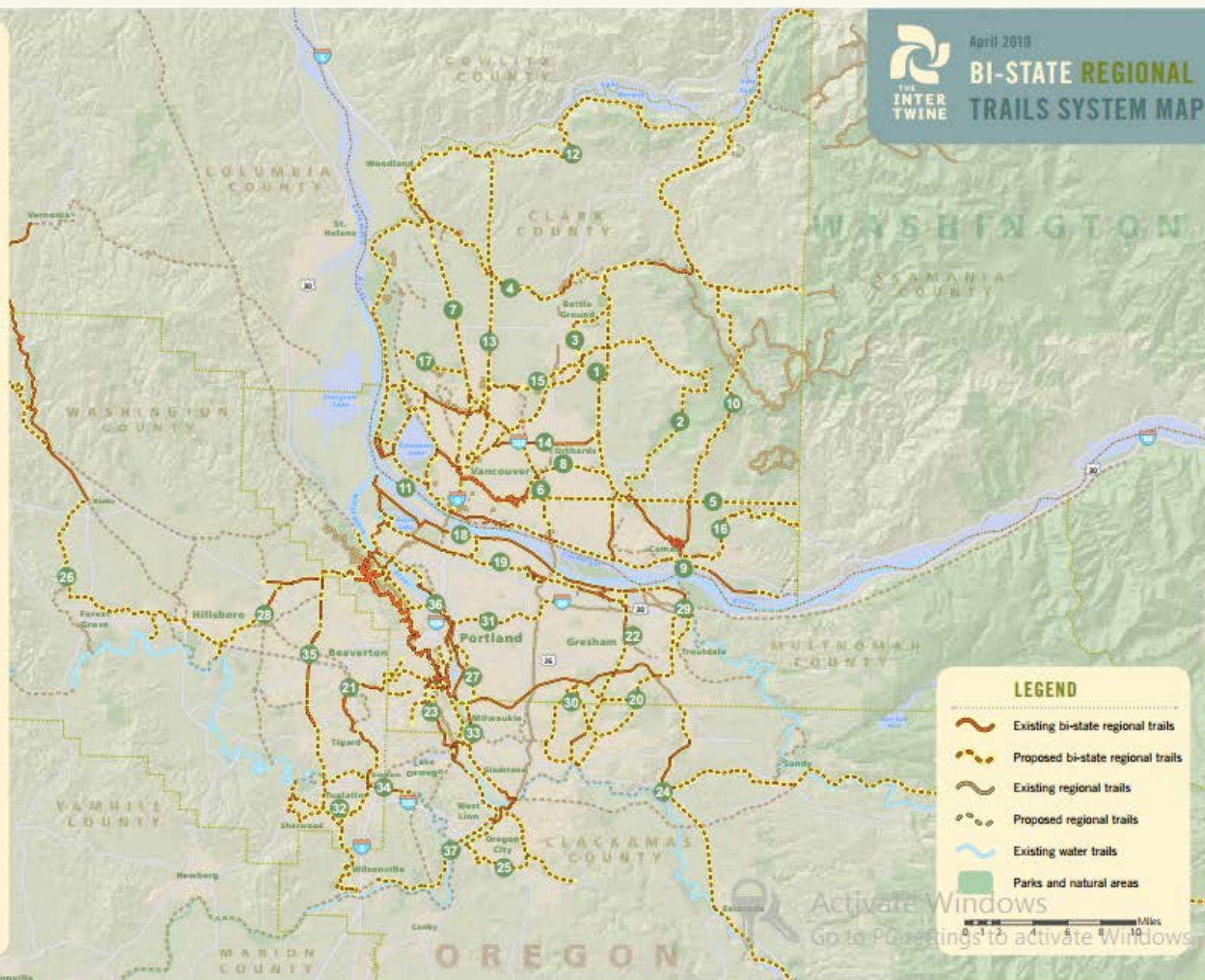
## 37 PROPOSED BI-STATE REGIONAL TRAILS

- 1 Battle Ground - Fisher's Landing Trail
- 2 Camp Bonneville Trail
- 3 Chelatchie Prairie Rail with Trail
- 4 East Fork of the Lewis River Trail
- 5 East Powerline Trail
- 6 I-205 Corridor Trail
- 7 I-5 Corridor Trail
- 8 Lake to Lake Trail
- 9 Lewis and Clark Greenway Trail
- 10 Livingston Mountain Dole Valley Trail
- 11 Lower Columbia River Water Trail
- 12 North Fork of the Lewis River Trail
- 13 North-South Powerline Trail
- 14 Padden Parkway Trail
- 15 Salmon Creek Greenway Trail
- 16 Washougal River Corridor Trail
- 17 Whipple Creek Greenway Trail
- 18 40-Mile Loop
- 19 Columbia Slough Trail
- 20 East Buttes Loop
- 21 Fanno Creek Greenway
- 22 Gresham/Fairview Trail
- 23 Hillsdale to Lake Oswego Trail
- 24 Mount Hood Connections
- 25 Oregon City Loop
- 26 Path to the Pacific
- 27 Portland Maximum Mode Split
- 28 Rock Creek Greenway
- 29 Sandy River Greenway
- 30 Scouters' Mountain/Mount Scott Loop
- 31 Sullivan's Gulch Corridor Trail
- 32 Tonquin Trail
- 33 Trolley Trail and 17th Avenue Connection
- 34 Tualatin River Greenway
- 35 Westside Trail
- 36 Willamette Greenway North
- 37 Willamette Greenway South



April 2010

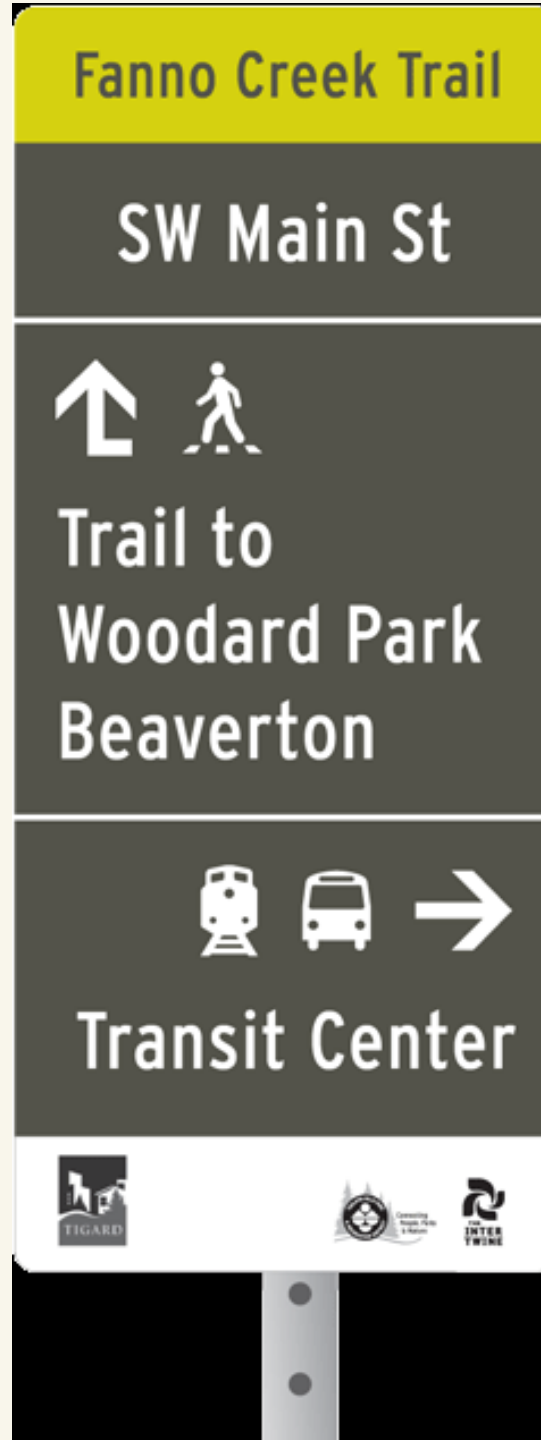
## BI-STATE REGIONAL TRAILS SYSTEM MAP







# Coloring outside the lines



- Parks directors
- Summits
- Collaborative projects



GET INVOLVED

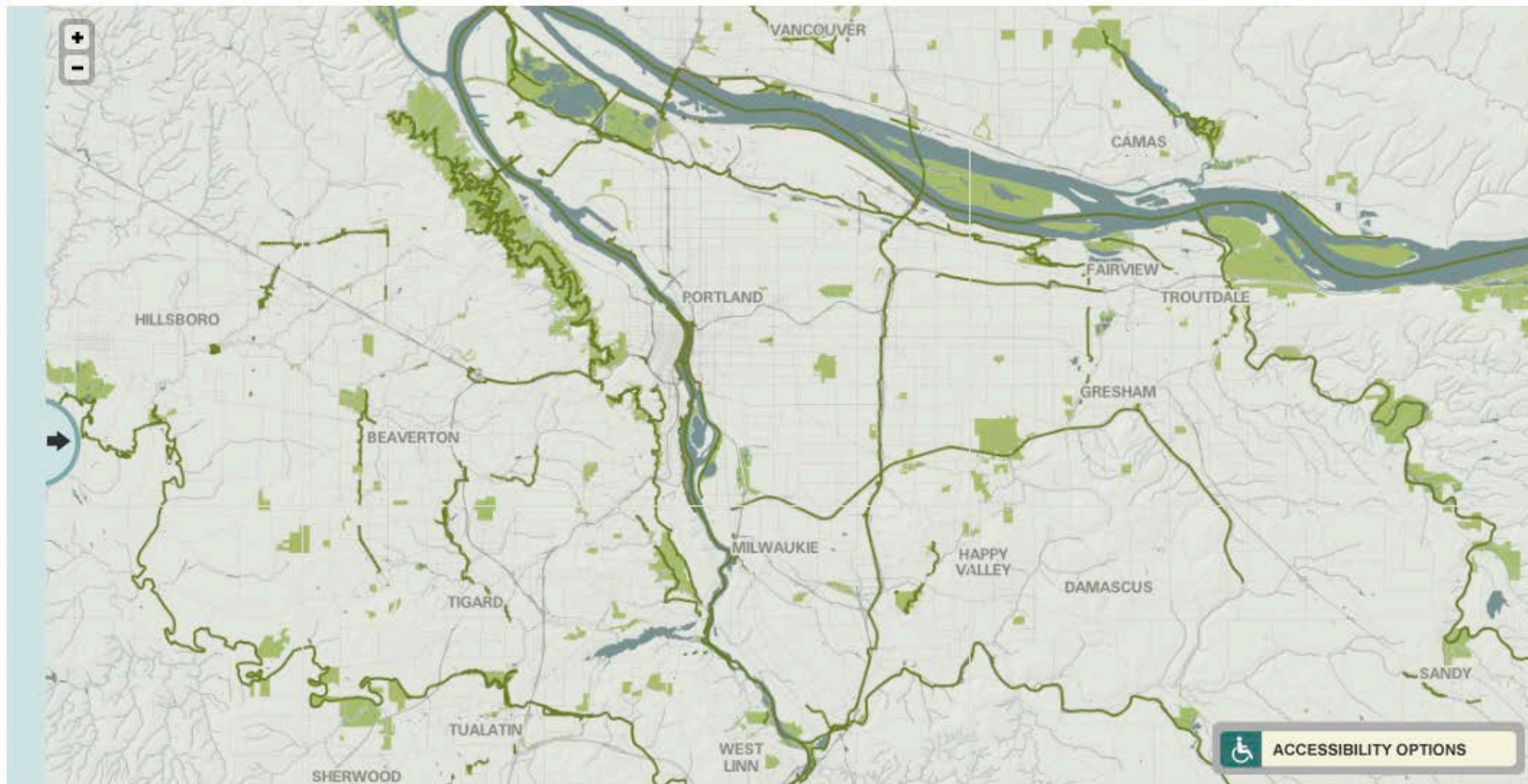
NEWS · CONTACT · ABOUT



**EXPLORE**  
PARKS & TRAILS

**FIND**  
ADVENTURES

**LEARN**  
ABOUT OUR REGION





# “Our Common Ground Dialogues”





# Connecting with People





# OUR COMMON GROUND



MORE NATURE BENEFITS EVERYONE

[THEINTERTWINE.ORG](http://THEINTERTWINE.ORG)  
PARKS, TRAILS & NATURAL AREAS







# TIA Summary

- Platform for leadership
- Inclusive
- “Owned” by partners
- Flexible to respond to need
- Substantial leverage
- Convener
- Communication hub

# The Intertwine Alliance

[www.TheIntertwine.org](http://www.TheIntertwine.org)



HIKE  
.....  
BIKE  
.....  
FLY A KITE

