

A stylized graphic on the left side of the slide. It features two dark green mountain peaks of different heights. Below the mountains is a dark green wavy band representing a forest or grass. At the bottom is a dark blue wavy band representing water. The entire graphic is composed of solid-colored shapes with white borders separating them.

Considering Carts and Pondering Pods

Food cart pods
in Multnomah County

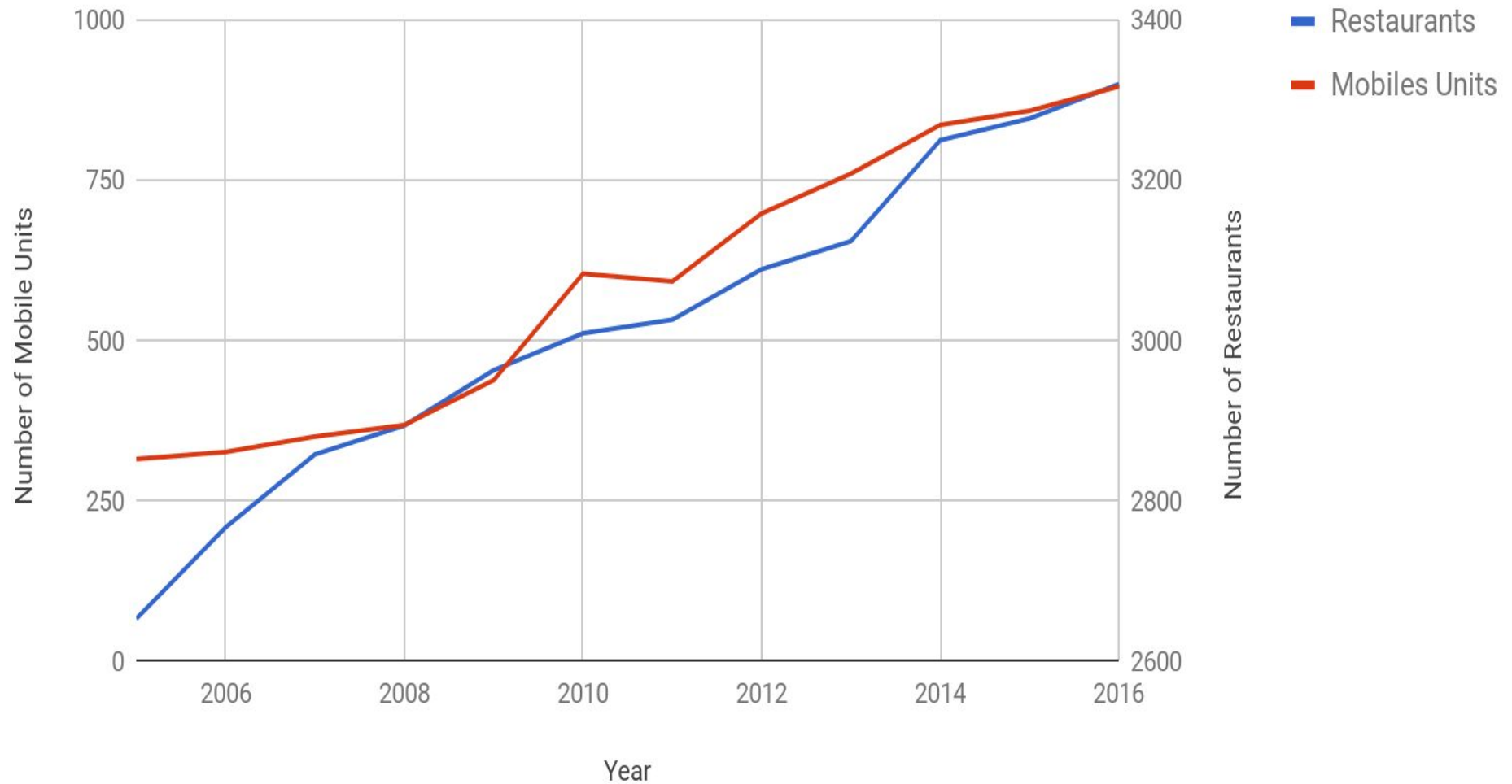
Environmental Health Services
Public Health Division
Health Department

- Setting the context
- Benefits of mobile cart and pods
- Impacts of mobile carts and pods
- Possible Solutions
- The Path Forward



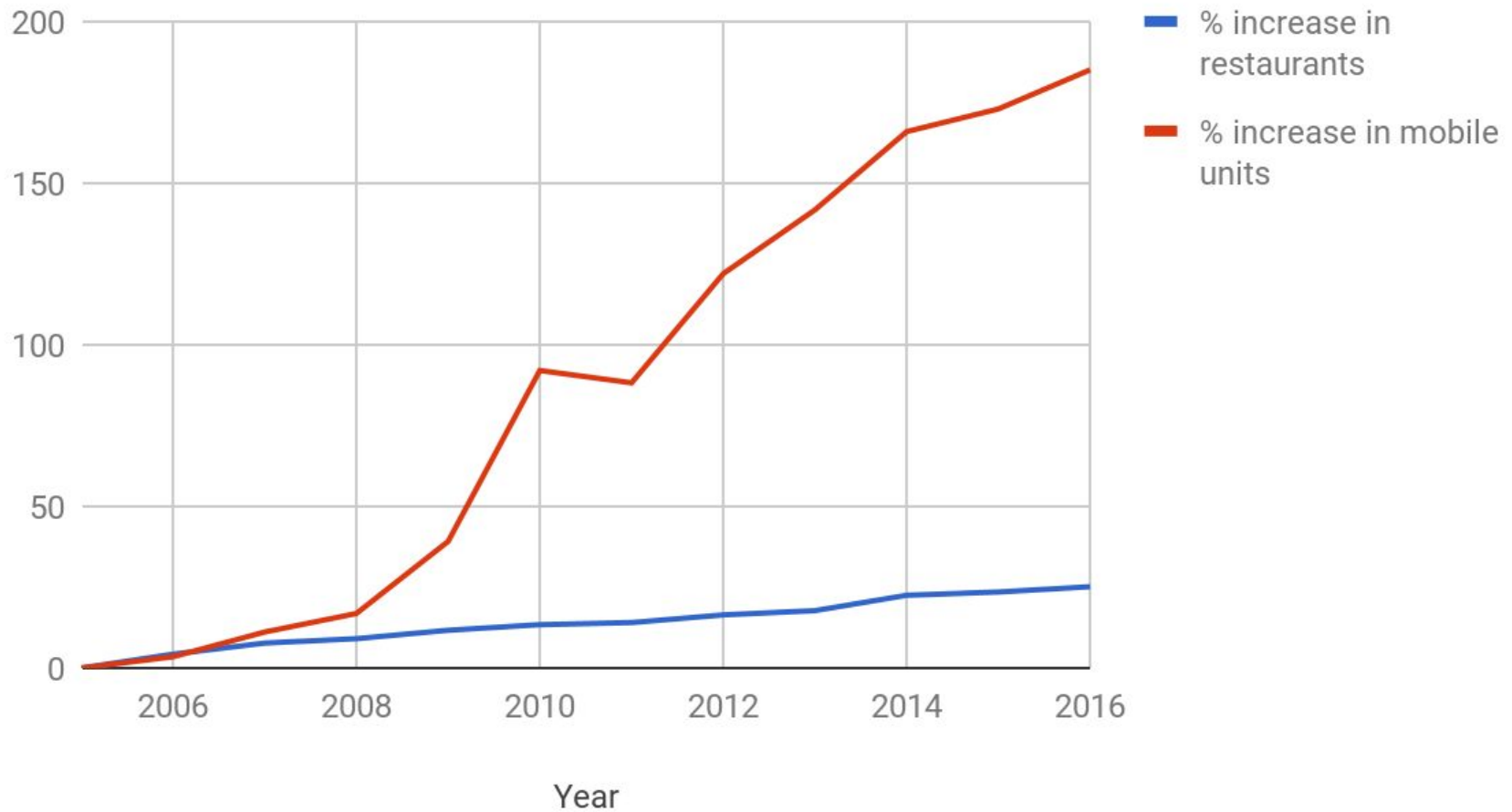


Numbers Numbers Numbers

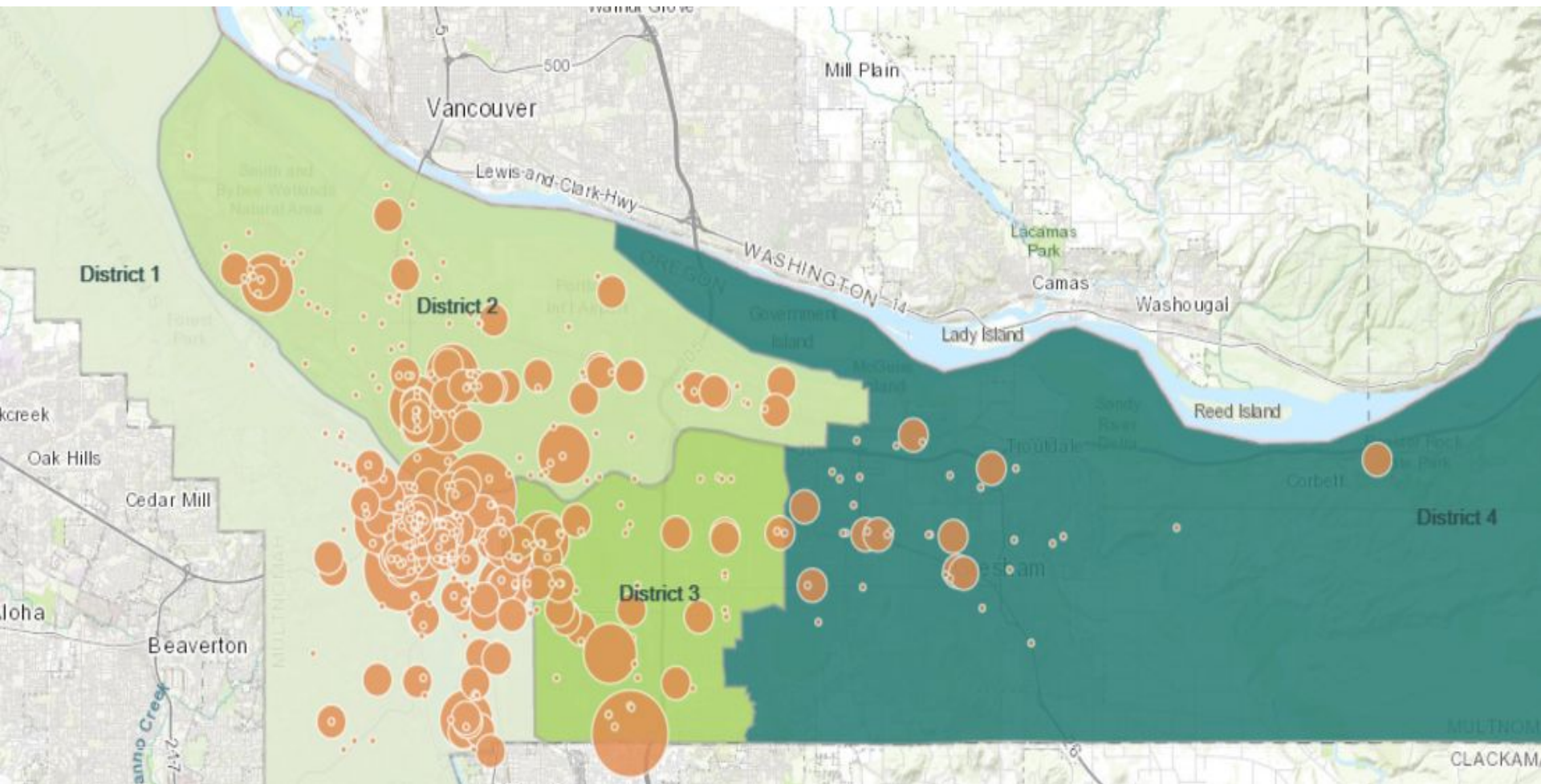


Numbers Numbers Numbers

Percent increase of mobiles and restaurants over time



Where are the mobile units?



District 1 - 512 District 2 - 304 District 3 - 182 District 4 - 54



Pods...then and now

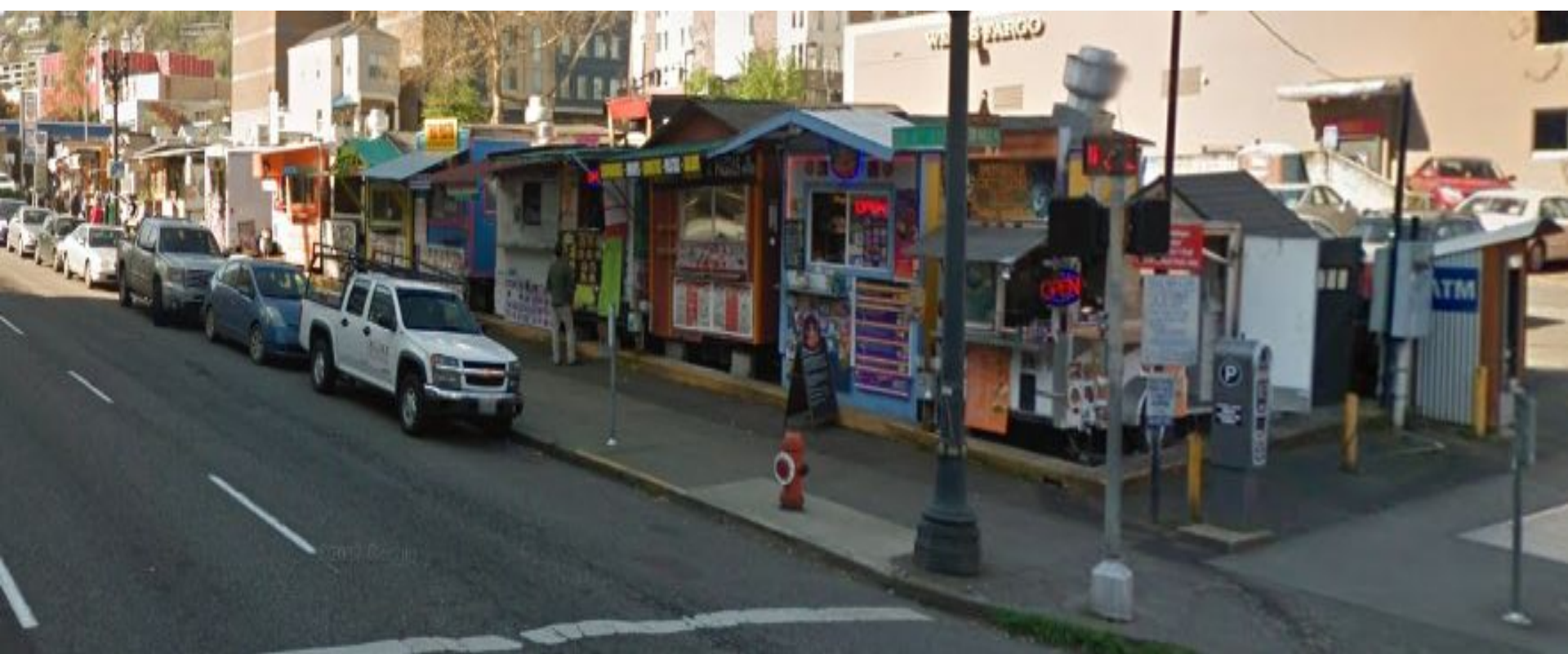


THEN

4th and Hall 2007 | 4 carts



Pods...then and now



NOW

4th and Hall 2017 | 20 carts



Pods...then and now



THEN

Cartlandia 2007 | 10 carts



Pods...then and now



NOW

Cartlandia 2017 | 29 carts



PODs...then and now



THEN

Portland Mercado 2007 | 0 carts



PODs...then and now



NOW

Portland Mercado 2017 | 10 carts



Why are Pods important?



Social Interactions



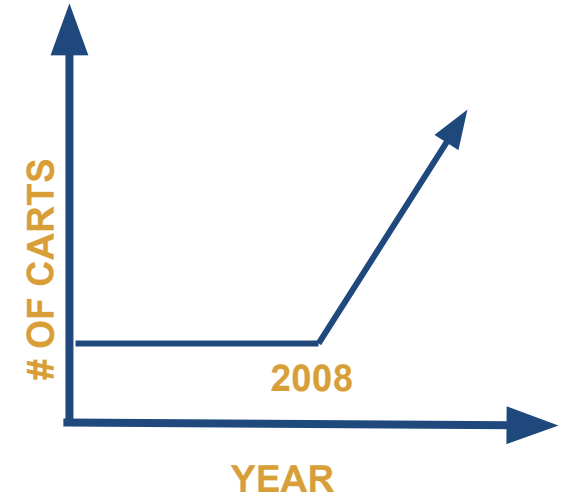
Walkability



Use Vacant Lots



Why are Pods important?



Why are pods important?



- Improve business in the community
- Support immigrants and refugees
- Promoting community gathering spaces/neighborhood livability
- Fostering tourist destination



Operational Challenges



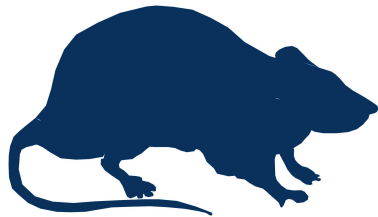
Drinking Water



Waste-Water



Solid Waste



Vectors



Setbacks



Power

Operational Challenges - Drinking Water



Operational Challenges - Wastewater



Operational Challenges - FOGs



Operational Challenges - Solid Waste



Operational Challenges - Vectors



Operational Challenges - Setbacks



Operational Challenges - Setbacks



Operational Challenges - Power Access

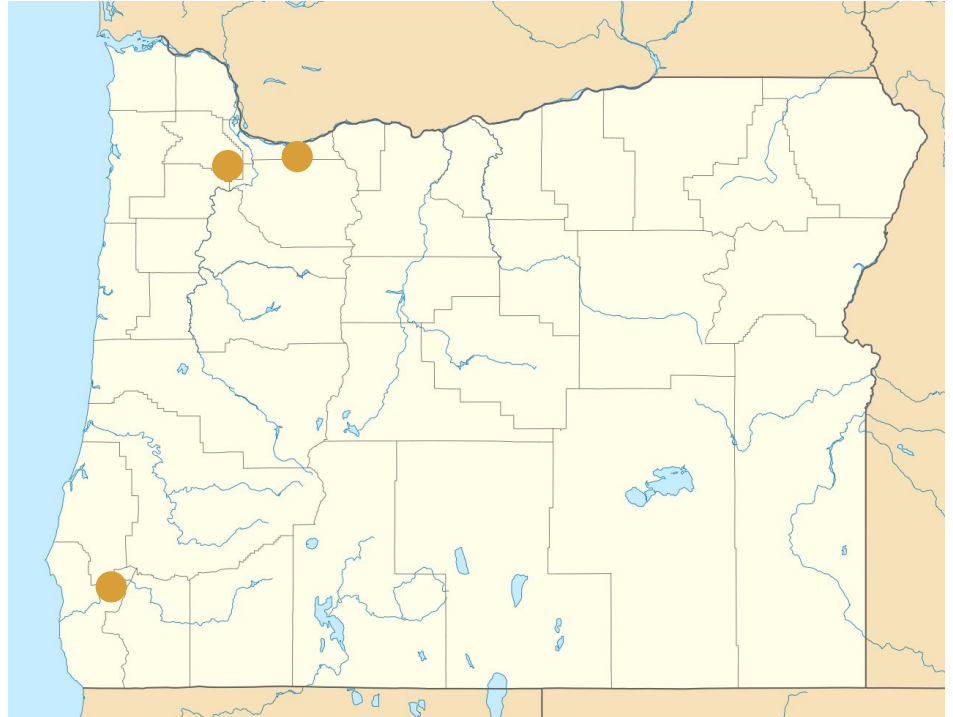


Source: <http://koin.com/2017/10/18/downtown-food-cart-on-fire-after-explosion/>



What are other jurisdictions doing?

- **Grants Pass** - 2012 Food Cart pod Ordinance
- **Gresham** - 2013 Food Cart Rules
- **Beaverton** - 2015 Food Cart pod Ordinance

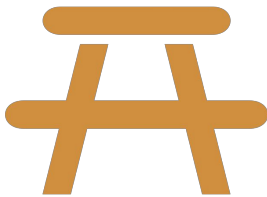


Pod Recommendations

We recommend that Multnomah County evaluate options to ensure that mobile units are getting the services they need to maintain public health. Landowners who establish food cart pods should provide the following:

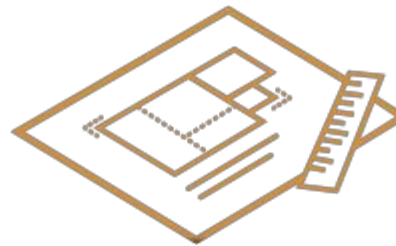
Amenities

If pods are providing places to eat on site they need to have bathrooms with proper hand wash stations. They should also provide adequate trash and recycling bins, with regular disposal.



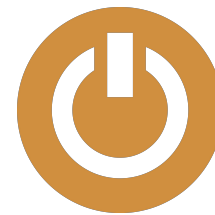
Site design

Placing setbacks on units to prevent fire hazards, prevent tripping hazards and reduce areas that can harbor vectors.



Utilities

A permanent source of power should be available; access to potable water, grey water disposal and FOG.



The Path Forward



The Path Forward in 2018

Jan-March

Identify and Recruit Workgroup Members

Reach out to industry, community members, local jurisdictions, public health advocates.

Identify and detail public health issues and regulatory system capacity to address them.

April-Jun

Identify Regulatory and Non-Regulatory Options

Engage dialogue with broader community (i.e., neighborhood associations, trade groups, public health advocates, economic development advocates).

Develop common understanding and agreement of issues and remedies.

July-Sep

Report back to BOCC. Develop plan for next steps

Analyze and summarize information collected. Develop consensus statement and recommendations from the Workgroup.

Deliver findings and recommendations to BOCC

