



# **Board of County Commissioners**

**Project Update  
February 25, 2016**

# Agenda

- Project Management Dashboard
- Equity Dashboard
- Construction Update
- Looking Ahead
- Facility on Opening Day
- Celebration

# **Project Management Dashboard**

## Schedule Milestones

	Estimated Completion	Status
- Long-Term Maintenance IGA	Spring '16	On-going
- Macadam Bay Driveway	Spring '16	On-going
- Main Bridge Completion	Spring '16	On-going
- Prelim. Greenroads Cert.	Spring '16	On-going
- Final Property Transfers	Summer '16	On-going
- Metro Agreement	Summer '16	On-going
- Replaced Trolley Facilities	Fall '16	On-going
- Overall Project completion	Fall '16	On-going

## Recent & Upcoming Meetings and Board Actions

- BCC Briefing	10/6/15
- BCC Briefing	12/15/15
- BCC Briefing	2/23/16
- BCC Briefing	4/19/16

## Public Involvement

Thru January, 2016

- Coordination/outreach (SMILE, businesses, schools) RE: bridge
- Provided ongoing traffic and construction updates
- Kept bridge neighbors informed of ongoing work

## December 2012 Project Funding Plan

Multnomah County VRF (Collected)	\$ 22,708,000
Multnomah County VRF (Bonded)	\$ 141,684,000
City of Portland	\$ 74,750,000
Oregon Jobs and Transportation Act	\$ 30,000,000
2012 Oregon Legislature	\$ 5,000,000
Federal funds carryover from planning	\$ 15,658,000
Federal TIGER III Act	\$ 17,700,000
<b>TOTAL</b>	<b>\$ 307,500,000*</b>

\*VRF provides adequate funds to cover anticipated County expenditures

## Stakeholder Issues

Thru January, 2016

- Traffic delays experienced as traffic control changes occur
- Meeting with Macadam Bay residents RE: 14 day driveway closure
- Meeting with Sellwood Harbor/Riverpark residents RE: demo/nearby

## Project Expenditures (post-ROD)

Thru January, 2016

	\$ Spent	Status
ROW	\$ 25,324,969	As of October 31, 2015, with 88% of construction complete, the projected cost is anticipated to be \$319,678,108 at completion, which is 3.96% above the December 2012 project budget.
Design/pre-con.	\$ 29,183,503	
Construction	\$ 228,656,263	
<b>Grand Total</b>	<b>\$ 283,164,736</b>	

## Social Equity

Thru December 31, 2015

A&E Team (Design) Sep '12	Goal	To Date	Status
DBE	7%, (\$1.0m)	9.0%	Complete
MWESB	13%, (\$1.8m)	14.9%	Complete
CM/GC Contractor	Goal	To Date	Status
DBE (Committed)	4%	4.0%	On Target
DMWESB (Contracted)	20%	18.7%	On Target
Workforce Women	14%	13.1%	Near Target
Diversity Minority	20%	28.0%	Above Target

Note: DMWESB goals/targets published Sept 2011 from CM/GC in subcontracting plan.

## News Headlines

- [New Sellwood Bridge to open on March 1 \(Portland Tribune\)](#)
- [Two public events planned to mark new Sellwood Bridge opening \(Portland\)](#)
- [Sellwood Bridge opening celebration and bike party set... \(BikePortland.org\)](#)
- [New Sellwood Bridge is a major upgrade from old, outdated bridge... \(OregonLive\)](#)
- [Will Sunday Parkways '16 pass your street? New... Sellwood bike route...](#)
- [Hello to the new: New Sellwood Bridge opens to traffic March 1](#)

**Followers:** - Weekly email updates = 741

- Twitter account = 1305

## Sustainability

- Greenroads Certification progress (interim) review - pending comments
- Reuse and recycling of onsite materials continues
- Preparations and completion of park, stream, and habitat restoration
- Advancements to the Regional Trail connectivity
- Advancements to pedestrian, bicycle, and transit facilities

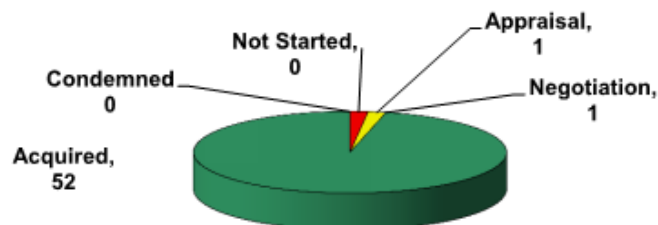
## Design Accomplishments

- Coordination with WSL Consortium on trolley replacement facilities
- Coordination with PGE, Freeman Motors, and PBOT for Macadam Bay Driveway
- Continued coordination/support for main bridge span, and surrounding facilities

## Construction Accomplishments

- Traffic signal improvements at the west interchange and at 6th/Tacoma
- Paving, utility coordination, and shifts in traffic control
- Continued work related to Macadam Bay and Freeman Motors driveway
- Interchange ramp / shift to next phase of traffic control
- Interchange and main bridge span work nearly complete

## Right of Way Progress



**ROW actions to be completed = 54**

**Current as of February, 2016**

## Upcoming Site Work

- Complete main bridge span work - open to public March 1st
- Continued work around Macadam Bay driveway, PGE tower, and Freeman motors
- Address sight distance concerns at Macadam Bay driveway (tree removal)
- Revised Consortium/Trolley alignment to accommodate updated future plans
- Taylors Ferry swale/storm drainage adjustments by the U-turn at OR 43

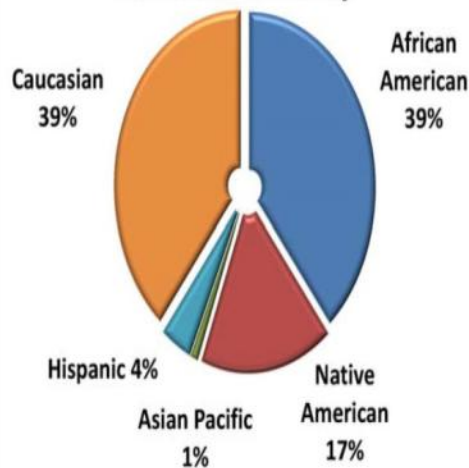
# Diversity Dashboard

## February 2016 Sellwood Small Business Dashboard

### Summary

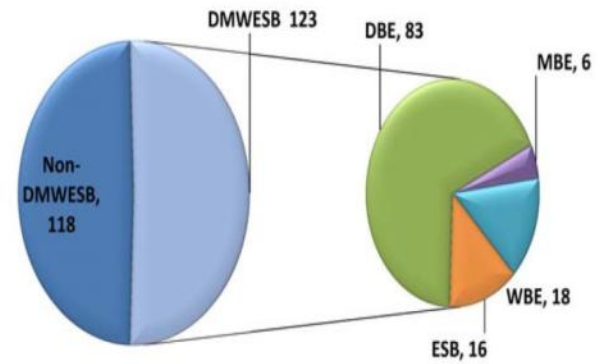
- These charts are based on contracts and dollars awarded.
- The contractor's goal is to award 20% of total contract dollars to DMWESB firms. Currently, the DMWESB Contracted is 18.72% and the DMWESB Paid is 16.31%.

### DMWESB Ethnicity

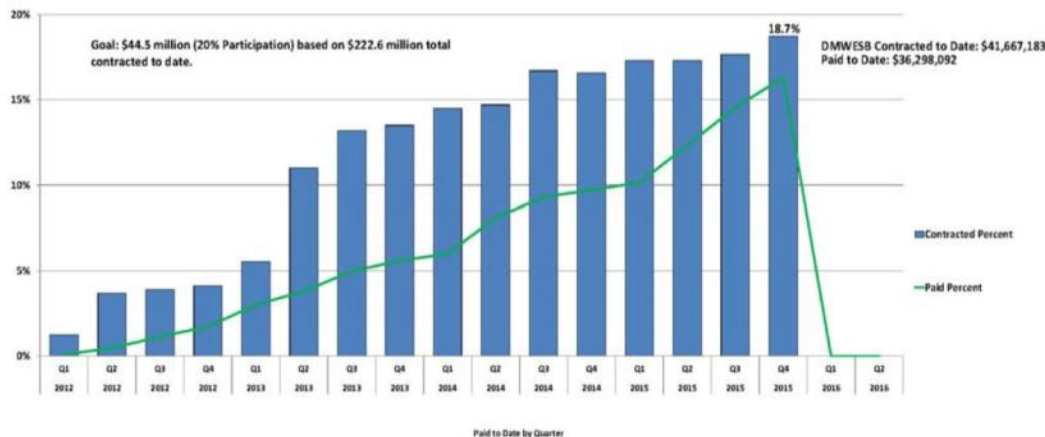


### Total Contracts Awarded

Total Contracts - 241



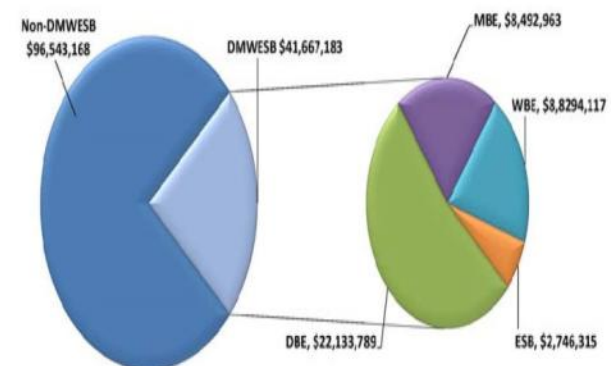
### DMWESB Participation and Paid to Date



### Total Subcontracted Dollars Awarded

\$138,210,351

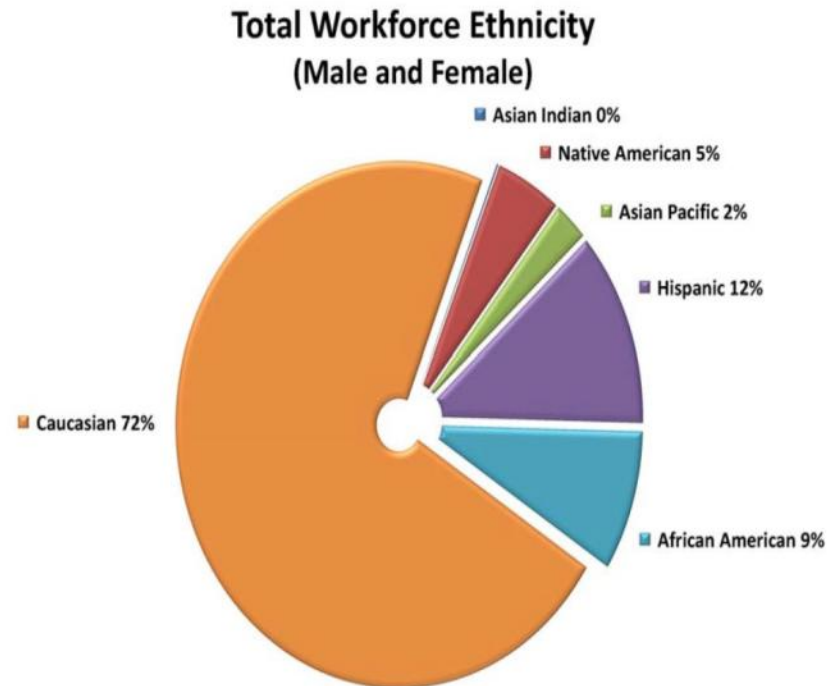
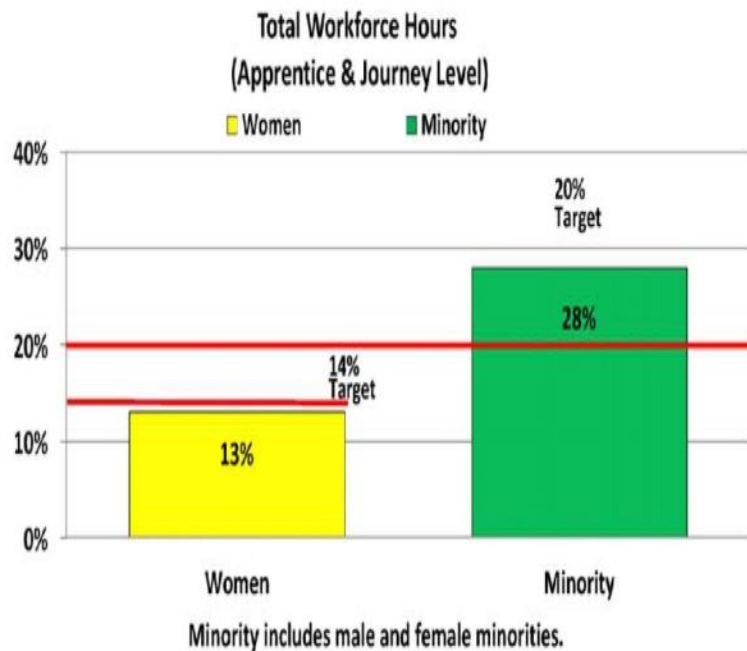
Total Project Contract Amount  
\$222,563,769



Glossary: DBE—Disadvantaged Business, MBE—Minority-Owned Business, WBE—Women-Owned Business, ESB—Emerging Small Business

## Summary

- Progress on meeting aspirational goals for minority and female participation.
- SSJV is exceeding the target for minorities and below the target for women.



## Summary

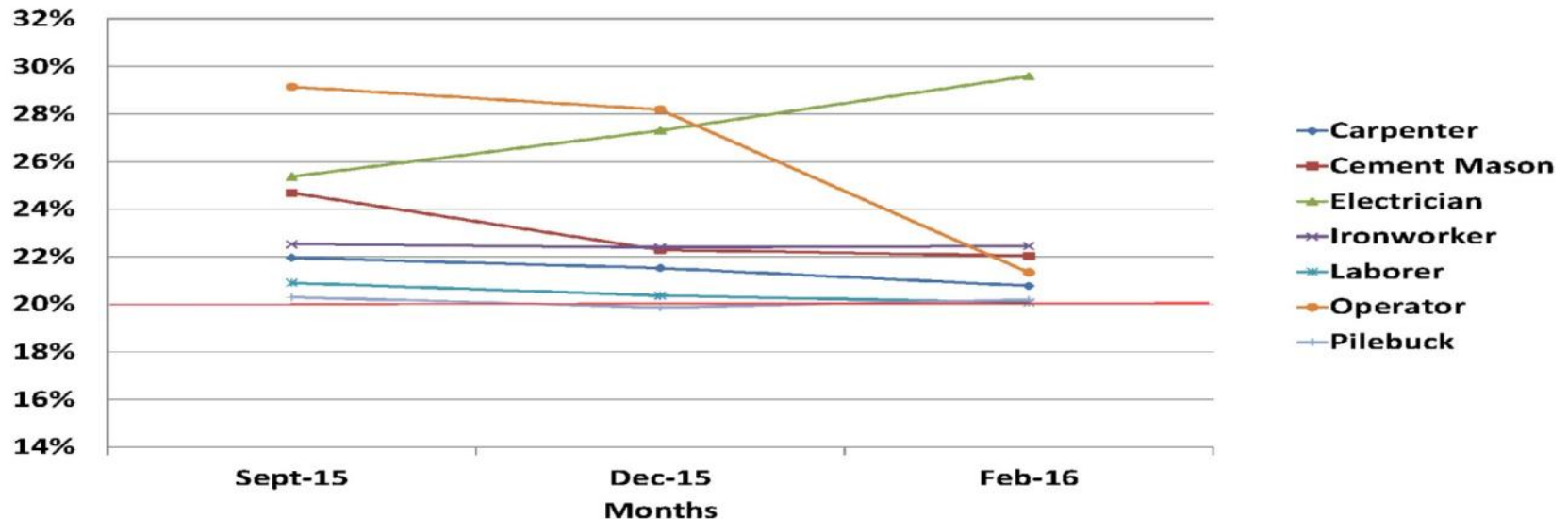
The following chart represents total apprenticeship hours by trade for all subcontractors working on the project. Any contractor over \$100K is required to achieve 20% apprenticeship hours by trade per the County's Workforce Training and Hiring Program. Multnomah County allows for exceptions to the apprenticeship requirement based on low hours, complexity of work, safety, and other considerations. The chart reflects apprenticeship including contractor exceptions.

## Apprenticeship Highlights

Through December 2016, 250 apprentices have worked over 106,000 hours. Of the 250 apprentices 36% are minorities and 20% are women. Total Project Apprenticeship is 21.28%

## Apprenticeship by Trade

**Goal: 20% Apprenticeship by Trade**



# Construction Update

# **Sellwood Bridge Replacement Project Information**

- About 89% complete construction
- Traffic on new span – March 1, 2016
- East approach and remaining work complete – Fall 2016

# Construction Progress

## (thru 01/31/16)

	Detour Bridge	Land- slide	Condo. Mods.	Work Bridge	OR 43 Walls	Bridge & IntX	Total
Total Value	\$20.68	\$12.91	\$3.19	\$9.40	\$12.75	\$165.57	\$224.50
Paid to dt	\$20.68	\$12.86	\$3.13	\$8.80	\$12.24	\$142.73	\$200.44
	100%	99.7%	98.1%	93.6%	95.9%	86.2%	89.3%

Costs in millions



01/15/16  
Courtesy of ODOT

# Work

- Landslide stabilization (complete)
- Stephen's Creek culvert (complete)
- Work bridges (complete)
- In-river foundations (complete)
- Condominium rebuild (Phase 1 complete, Phase 2)
- Riverview Cemetery (Phase 1 complete, Phase 2)
- Miles Place (Complete)
- Macadam Bay Driveway
- Regional Trail
- Powers Marine Park
- West OR 43 retaining walls (Complete)
- East OR 43 retaining walls (Complete)
- OR 43 roadway
- Waterline relocation (Complete)
- West approach
- Remove old bridge piers (Pier 19)
- Main bridge piers (Complete)
- Steel fabrication (Complete)
- Steel installation (minor)
- Main bridge concrete deck, sidewalks (Complete)
- East approach (S side complete, N side, S sidewalk)
- Traffic on new bridge
- Remove detour and work bridges
- Tacoma Street – signal and plantings
- RACC Art on Tacoma Street







01/15/13  
Multnomah County



01/25/13  
Multnomah County



04/16/15  
Multnomah County



02/17/16  
Multnomah County











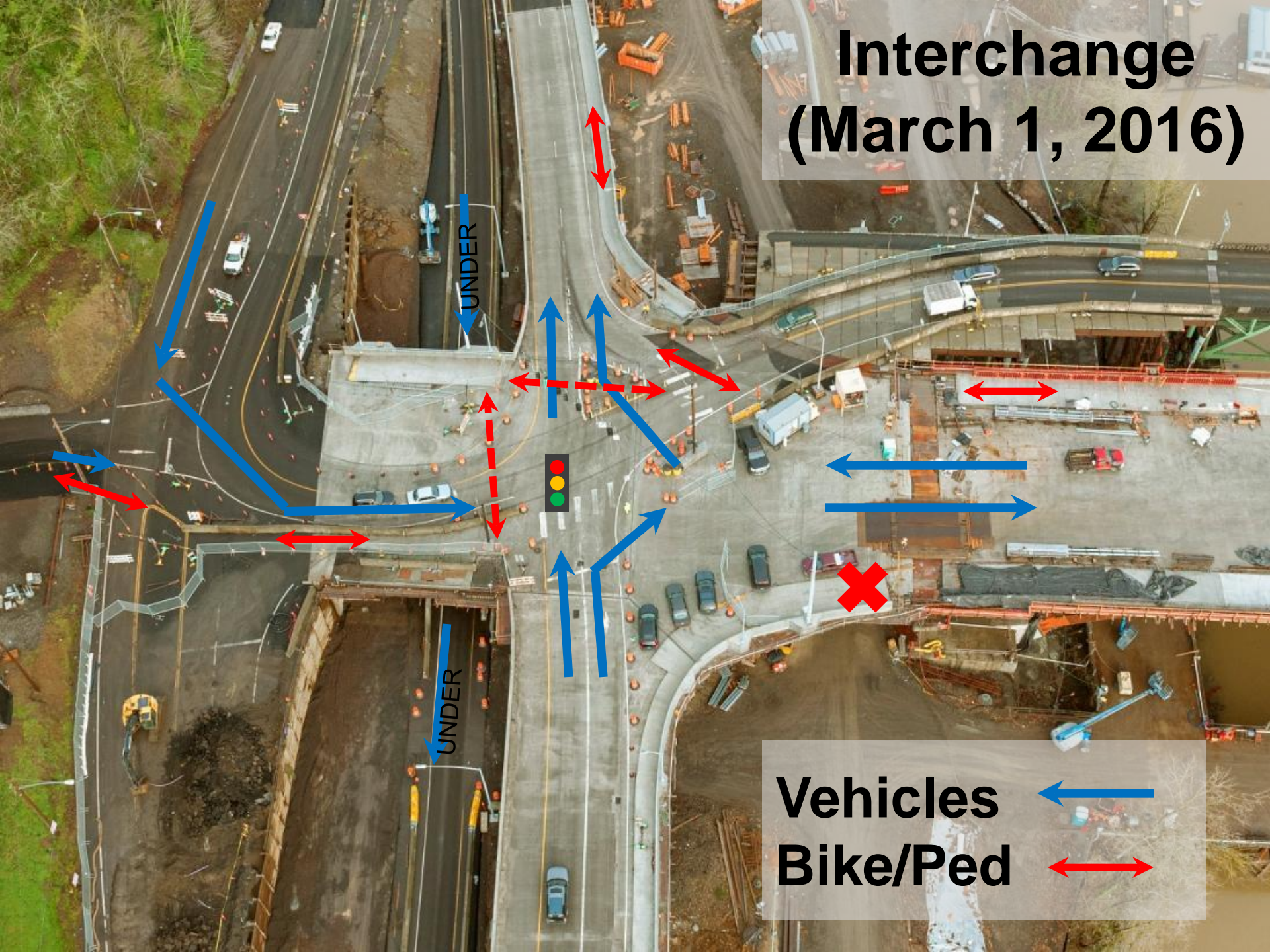


01/15/16

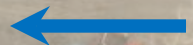
Courtesy of ODOT

# **Facility on Opening Day**

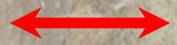
# Interchange (March 1, 2016)



**Vehicles**



**Bike/Ped**



# Main Spans (March 1, 2016)



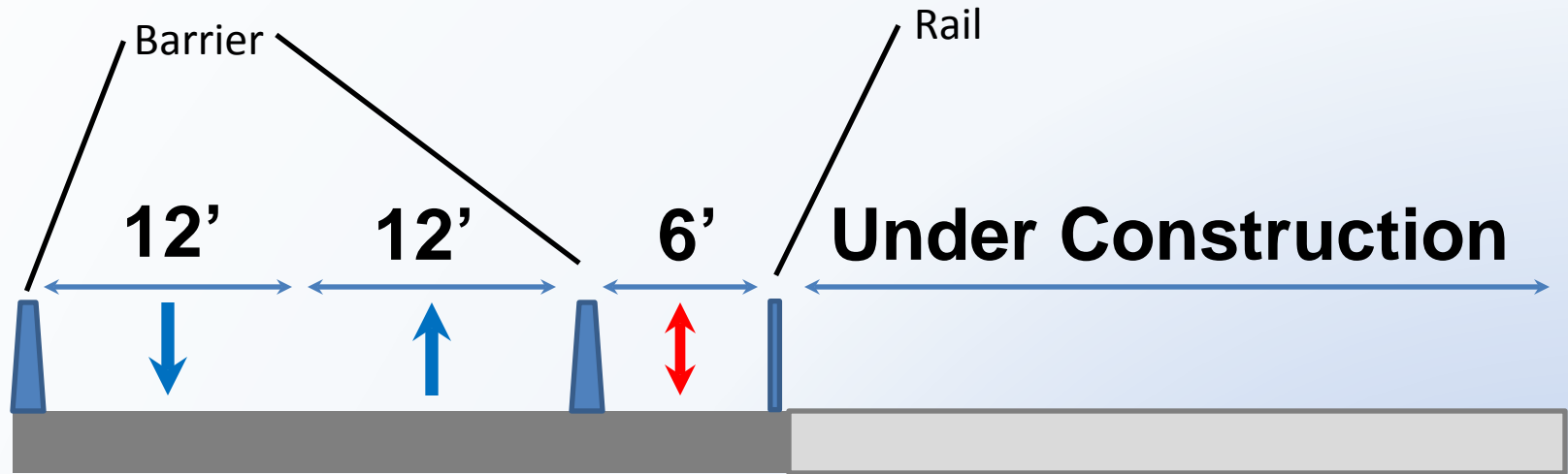
**Vehicles** ←  
**Bike/Ped** ↔

# East Approach (March 1, 2016)

**Vehicles** ←  
**Bike/Ped** ↔



# East Approach (March 1, 2016)



**Looking West**

**Vehicles** ←  
**Bike/Ped** ↔

# Looking Forward

- Spring 2016
  - Macadam Bay Driveway
  - Trail from Miles Place to Bridge
  - OR 43
  - Condominium outbuildings
- Summer 2016
  - East approach north half
  - Multi purpose path bridge to south sidewalk
  - Landscaping
  - Removal of old bridge and work bridges
  - Bridge to OR43 left turn opens, Taylor's Ferry U-turn closes
- Fall 2016
  - Condominium landscaping
  - South sidewalk on east approach (bike/ped facilities complete)
- Late Fall 2016 – Project Complete

# Work remaining after March 1 bridge opening

While the March 1 opening of the new Sellwood Bridge to traffic marks a major milestone, a lot more construction work is scheduled this year. Much of the remaining work could not be performed until the new bridge opens.

Here's a look at remaining work before the project is completed around Thanksgiving 2016. Schedules are subject to change:

## Taylor's Ferry at Highway 43 Turnaround

The turnaround for bridge traffic to access Highway 43 south will be removed in August after the left turn from the bridge to Highway 43 south opens.

## Macadam Bay/Freeman Motors Driveway

The new driveway is open but an archaeological find has delayed completion of some elements. Work is expected to be completed in March/April.

**Highway 43 Final Paving** - Scheduled for August.

## Northbound Highway 43 Through Lane Under Bridge

This lane is expected to open in May.



## Left Turn from Sellwood Bridge to Highway 43 South

This turn movement is expected to open in late August. It will eliminate the need for drivers to travel north and turn around at Taylor's Ferry.

## Macadam Bay Floating Home Community

## Westside Trail

The westside trail from the bridge to Willamette Park is expected to open in April. The wide trail will follow the trolley corridor and SW Miles Place. It will be a major improvement compared to the old trail along the east side of busy Highway 43.



## Willamette River

## Removal of Detour Bridge Truss

The concrete features of the 90-year old Sellwood Bridge truss spans (deck, sidewalks and railings) will be removed in March and April. The steel truss will be disassembled and removed in May and June.

## Removal of Detour Bridge Piers

The pier and protective fenders will be removed from mid-June to late August. The river piles can only be removed during the in-water work period this summer.

## Removal of Work Bridges

The timber decks will be removed this spring. Pile removal will happen during the in-water work period starting in July.

## South Sidewalk of New Bridge

The south sidewalk will open in November because the section on the east approach cannot be built until the north half of the east approach opens to traffic.

## North Half of East Approach

The north half of the east approach could not be built until the east end of the detour bridge was removed. The contractor will drill foundations for the north half of the approach, build columns, install girders, deck and sidewalk. The north half will open in October. Until then, the east approach will have a narrow curving section with one shared use sidewalk on the north side.

## Swales

Bioswales to treat stormwater from the bridge will be installed on the east and west sides of the river from August to November. These areas are currently in the contractor's staging area.

## Eastside Condominiums

Restoration and improvements to condo complexes on each side of the east approach are scheduled from February through October. Areas of the complexes were part of the project's work zone.

## Miscellaneous Bridge Work

From time to time, the contractor will be working on the new bridge to complete various work, including punch list items.

## Public Art Installation

Mikyong Kim's series of 23 *Stratum* sculptures will be installed on the north and south sides of SE Tacoma St. between SE 6th Ave. and SE Grand Ave. in May.



SE Spokane St

SE Tacoma St

## Tacoma & 6th Ave. Traffic Signal

The new signal should be activated in November, after final lane striping and completion of the east approach.

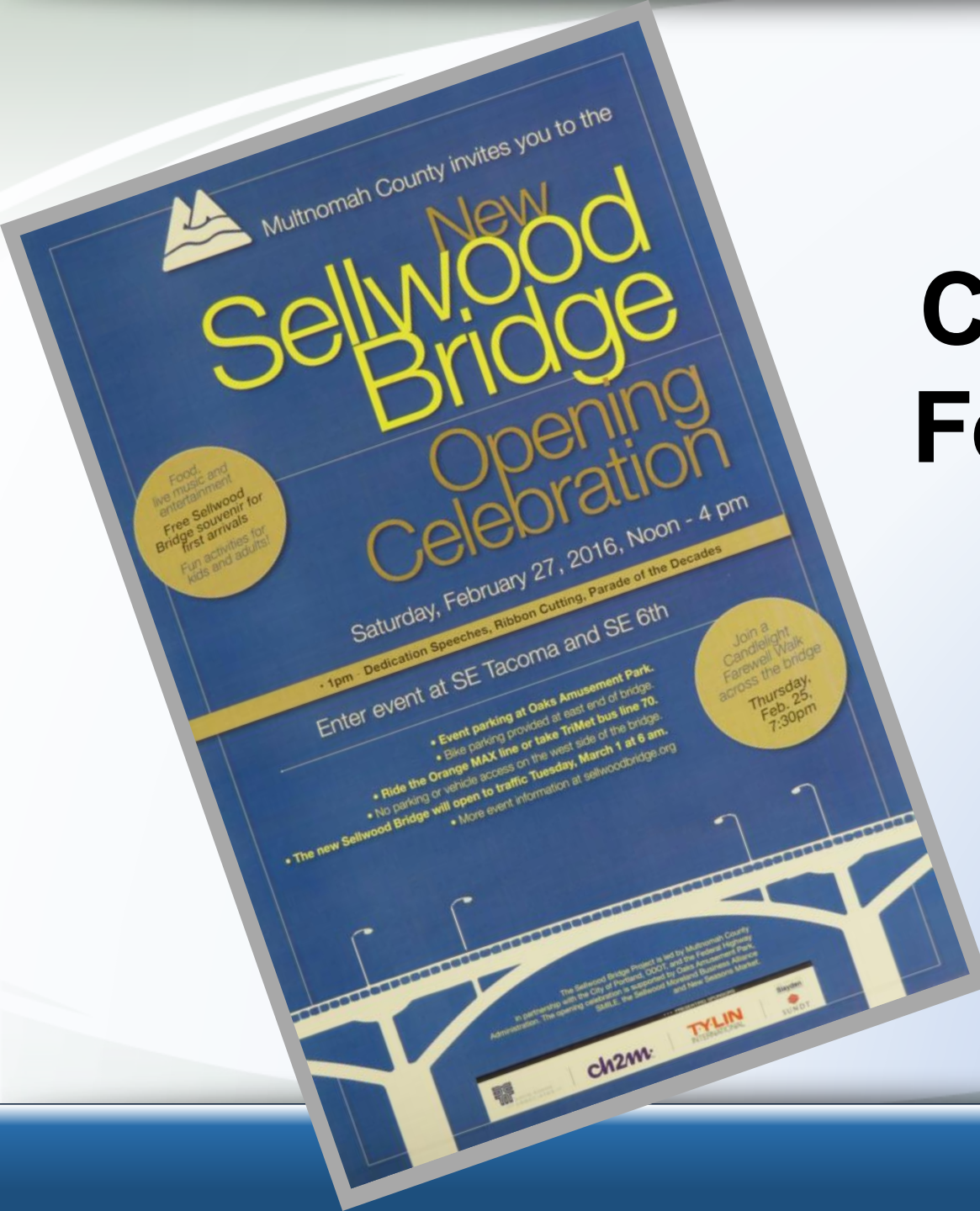
## Map Key

- New bridge/street
- Existing street
- Bike/pedestrian path
- Detour bridge
- Work bridge
- Trolley
- Swale



Updated: 2/15/2016

# Opening Celebration February 27



# Public Events

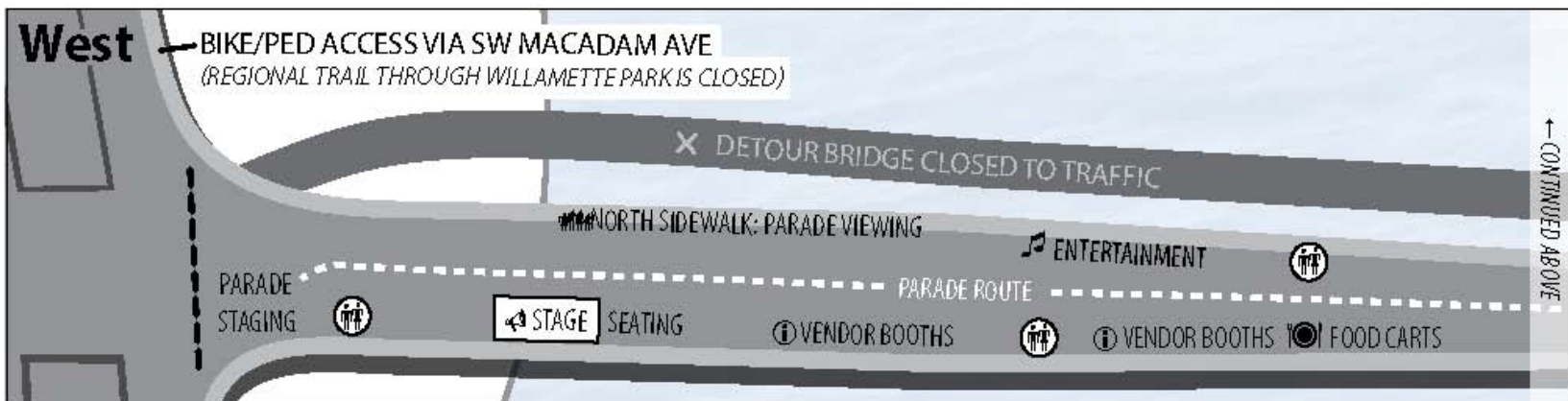
- Old Bridge Farewell Candlelight Walk
  - Feb. 25, 7:30 – 8: 30 pm
- Feb. 27 New Bridge Celebration
  - Feb. 27, Noon – 4 pm
  - Entertainment, Food, Booths
  - 1 pm Speakers
  - Followed by Ribbon Cutting, Parade of the Decades, Fireboat Water Cannon Salute



# Community Celebration Event Map

Saturday, February 27, Noon to 4 pm

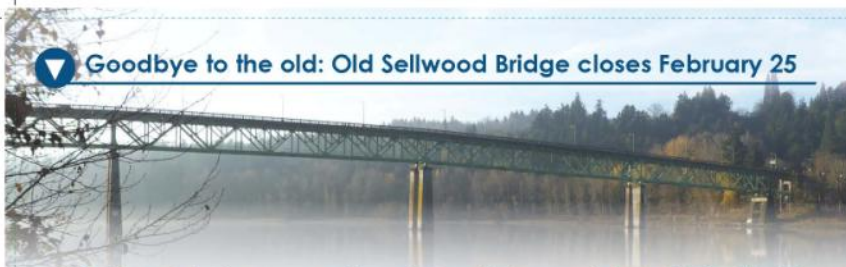
East



# Communication & Partners

- Newsletter
- Poster
- Partnership with SMILE, Sellwood businesses, Oaks Park and schools
- Presenting Sponsors:
  - CH2M, David Evans and Associates, T.Y. Lin International, Slayden-Sundt

## Goodbye to the old: Old Sellwood Bridge closes February 25



### Old Bridge celebration: Thursday, February 25, 7:30-8:30 pm

On Thursday night February 25, fans of the old Sellwood Bridge will have one last chance to say goodbye. The old bridge will permanently close to traffic that day at 7 pm. From 7:30 - 8:30 pm, residents

can walk across the 90-year old bridge one last time to say goodbye. Bring your flashlights, electric candles, and phone lights for this candlelight event.

Participants should assemble on Grand Avenue off of Spokane street (near the bridge's north sidewalk) no earlier than 7 pm. The procession starts at 7:30 pm. We'll have time to walk from east to west

and back again. The bridge will need to be cleared by 8:30 pm so that work to set up the new bridge for traffic can begin.

While the traffic shift to the new bridge is a significant milestone, bridge and interchange work will continue through November of 2016 (see inside for details on remaining work).



A1539  
Communications Office  
501 SE Hawthorne Blvd., 4th floor  
Portland, OR 97214

ECRWSS  
POSTAL CUSTOMER

### Sellwood Bridge Opening Event

Saturday, February 27, Noon to 4 pm

Read more inside or at [www.sellwoodbridge.org](http://www.sellwoodbridge.org)

## Hello to the new: New Sellwood Bridge opens to traffic March 1

### Community celebration Saturday, February 27, noon to 4 pm

After years of construction, the Sellwood Bridge Project has reached a major milestone - and you are invited to a celebration!

On Tuesday, March 1, 2016 at 6 am, the new bridge will open to traffic so that contractors can begin to remove the detour (old) bridge. The old bridge will close to all modes of traffic (motor vehicles, bicyclists and pedestrians) on Thursday, February 25 at 7 pm for four days while the contractor sets up the new bridge for traffic.

The community is invited to a celebration on the new bridge on Saturday, February 27. The new bridge opens for the free, family-friendly event at noon. An opening

ceremony and ribbon cutting will start the celebration around 1 pm, followed by the "Through the Decades" parade.

Food carts, retail and non-profit booths will be located on the bridge for the party. There will be entertainment on the main stage and along the bridge, and a few surprises. The first to arrive will receive a Sellwood Bridge lapel pin to commemorate the day. Due to limited parking, Sellwood neighbors are encouraged to walk or bike to the event. Bicycle parking will be provided at the east end of the bridge. Dress warm and bring an umbrella!

The bridge opening celebration is generously sponsored by the four companies that have been most involved with

designing, managing, and building the project: CH2M, Inc., David Evans and Associates, Inc., the Slayden-Sundt Joint Venture, and T.Y. Lin International. Special thanks to members of SMILE (the Sellwood Moreland Improvement League) and the Sellwood Westmoreland Business Alliance for their support for the celebration.



Winter 2016

# the Sellwood Bridge

## We made it! New Sellwood Bridge opens Tuesday, March 1

### The new Sellwood Bridge is scheduled to open to traffic on Tuesday, March 1 by 6 a.m.

"I am so excited," said Multnomah County Chair Deborah Kafoury. "I share the anticipation of all the bridge neighbors as this major project nears completion."

The county's biggest transportation project in decades has faced many challenges, including:

- Securing funds
- Designing around an active landslide
- Building a bridge very close to homes and businesses
- Keeping the bridge and Highway 43 open to traffic during construction

Bridge users, neighbors and all Multnomah County residents deserve a pat on the back

for their patience during construction and their support for the long-awaited project. Together, "we made it!"

We hope many of you will join us at the bridge opening celebration on Saturday, February 27 from noon to 4 pm (see story on back).

As the story inside this newsletter explains, a lot of construction still remains after the new bridge opens to traffic. Construction is scheduled to be complete by Thanksgiving 2016. When it is, Portland will have its first Willamette River bridge open to private vehicles that is designed to withstand a Cascadia Zone subduction earthquake.

Multnomah County is the lead agency for the Sellwood Bridge project. Partner agencies include the Portland Bureau of Transportation, the Oregon Department of Transportation and the Federal Highway Administration.

## New bridge will include benches designed and built by local students

The new Sellwood Bridge may be the first bridge in the country to feature a permanent element designed and built by high school students.

The bridge will have four viewing platforms over the river - called belvederes - where bicyclists and pedestrians can pause to enjoy views from the bridge.

Each belvedere will have a semi-circular bench made of juniper wood and steel designed and fabricated by local high school students. The students attend the ACE Academy (ACE = Architecture, Construction and Engineering), a public charter school drawing students from five districts. ACE worked with Centennial High School's metal fabrication program. ACE is in Northeast Portland and Centennial is in Gresham.

Students in the two programs worked with staff from the design and engineering firm T.Y. Lin International and Multnomah County on the bench design. The benches are a key element of the project's school outreach program, which is led by Lois D.

Cohen Associates, a community engagement firm and sub-consultant to T.Y. Lin.

The schools program worked with 12 local schools during the project's design and construction phases. Two thousand students in grades 2 through 12 learned about the

project in classrooms, shop classes, and in field trips to the bridge. The program used the bridge project to provide lessons about civic engagement, as well as the planning, design and construction of a major transportation project. Students were exposed to a range of new careers.

The benches will be installed this spring. A prototype will be on view in one of the belvederes at the February 27 opening celebration.

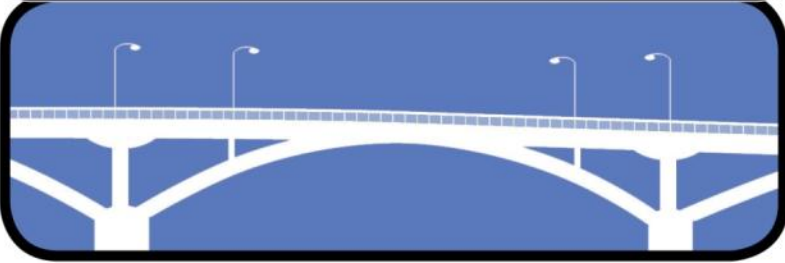
Congratulations to these students who worked on the benches: Rebecca Fast, Taylor Lehman, Jesse Martinez, Nate Porter, Kody Thompson, and Ethan Wells from ACE Academy. Centennial High School students are Jose Calderon, Braden Dukart, Aryan Niroumand, Kaleb Paschall, Seth Townsend, and Frank Villa.



Students share the bench design with Multnomah County Commissioners.

[www.sellwoodbridge.org](http://www.sellwoodbridge.org)

## SELLWOOD BRIDGE • 2016



Souvenir Pin  
Volunteer Apron  
Poster



Multnomah County invites you to the

# New Sellwood Bridge Opening Celebration

Saturday, February 27, 2016, Noon - 4 pm

• 1pm - Dedication Speeches, Ribbon Cutting, Parade of the Decades

Enter event at SE Tacoma and SE 6th

- Event parking at Oaks Amusement Park.
- Bike parking provided at east end of bridge.
- Ride the Orange MAX line or take TriMet bus line 70.
- No parking or vehicle access on the west side of the bridge.
- The new Sellwood Bridge will open to traffic Tuesday, March 1 at 6 am.
- More event information at [sellwoodbridge.org](http://sellwoodbridge.org)

Join a Candlelight Farewell Walk across the bridge  
Thursday, Feb. 25, 7:30pm

The Sellwood Bridge Project is led by Multnomah County in partnership with the City of Portland, ODOT, and the Federal Highway Administration. The opening celebration is supported by Oaks Amusement Park, SMILE, the Sellwood-Moreland Business Alliance and New Seasons Market.

SPONSORS:



# Questions?

