



Latinos in Multnomah County: An Unsettling Profile

Presentation to Multnomah County Board of Commissioners

February 23, 2012

Carmen Rubio, Latino Network

Victor Merced, Hacienda CDC

Pietro Ferrari, Catholic Charities

Consuelo Saragoza, Multnomah County Health Department

Dr. Ann Curry-Stevens, Portland State University



Portland State
UNIVERSITY



Outline

- Introducing Research Project and the Coalition of Communities of Color
- Synthesis of Findings
 - Depth and breadth of research findings
 - 28 systems & institutions studied
 - Approx. 60% is new research and 40% from existing studies
 - Comparisons with Seattle, USA, different points in time
- Summary
- Recommendations

Research Project – Community-based Participatory Research (2008-2012)

- Partnership between PSU's School of Social Work, the Coalition of Communities of Color and Latino community
- Funding from:
 - Multnomah County
 - City of Portland
 - Northwest Health Foundation
 - United Way of the Columbia-Willamette
 - Coalition of Communities of Color (In-kind contributions)
 - Portland State University



Coalition of Communities of Color

The Coalition's mission is:

- To address the socioeconomic disparities, institutional racism, and inequity of services experienced by our families, children and communities
- To organize our communities for collective action resulting in social change to obtain self-determination, wellness, justice and prosperity

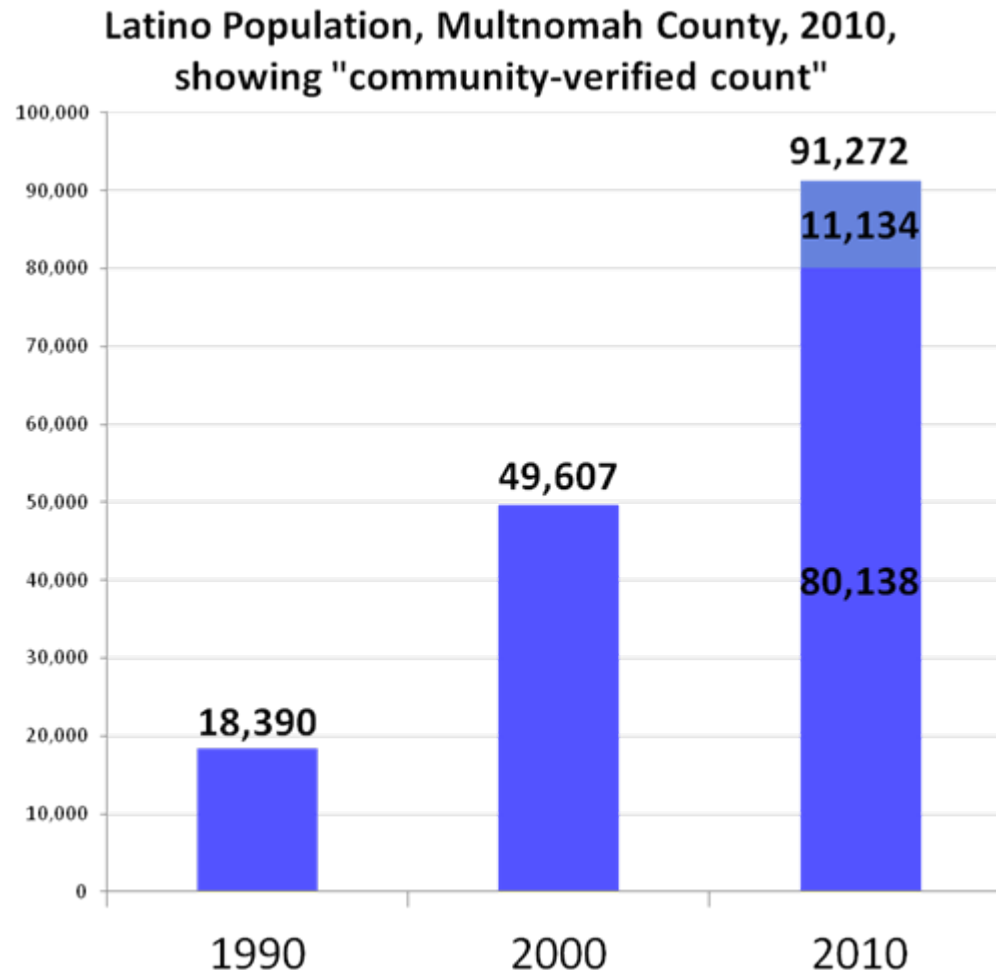


Synthesis of findings

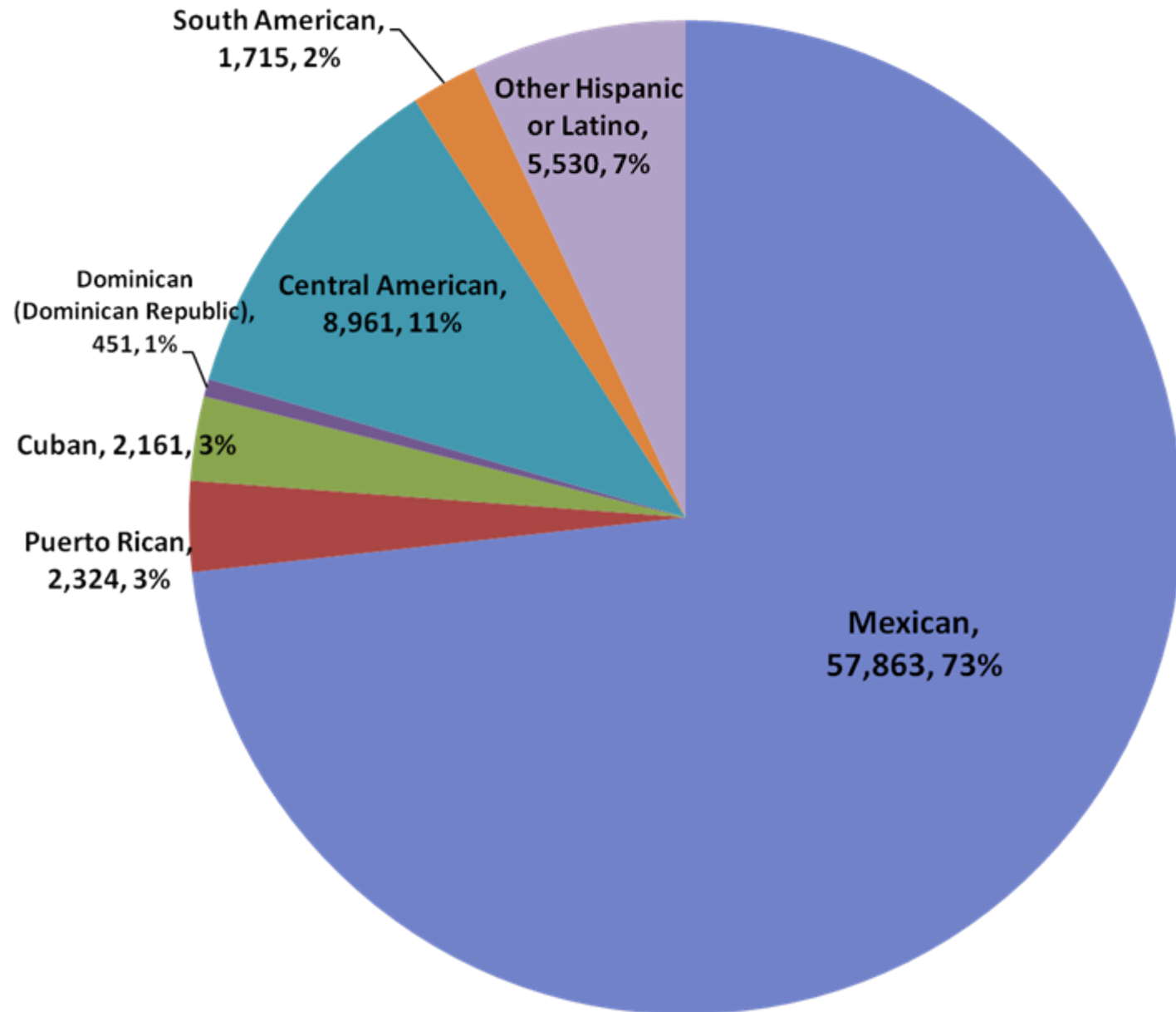
- We are **sizeable and growing** in numbers
- There are **huge disparities** across all systems and institutions between Latinos and Whites
- It is **worse here than in King County** (home to Seattle) for Latinos
- It is **worse here for Latinos than USA averages**
- These comparisons show that **policy can influence outcomes**
 - The policy landscape is failing our communities
 - We can and must reverse these trends

Key Finding: Culturally-verified population counts

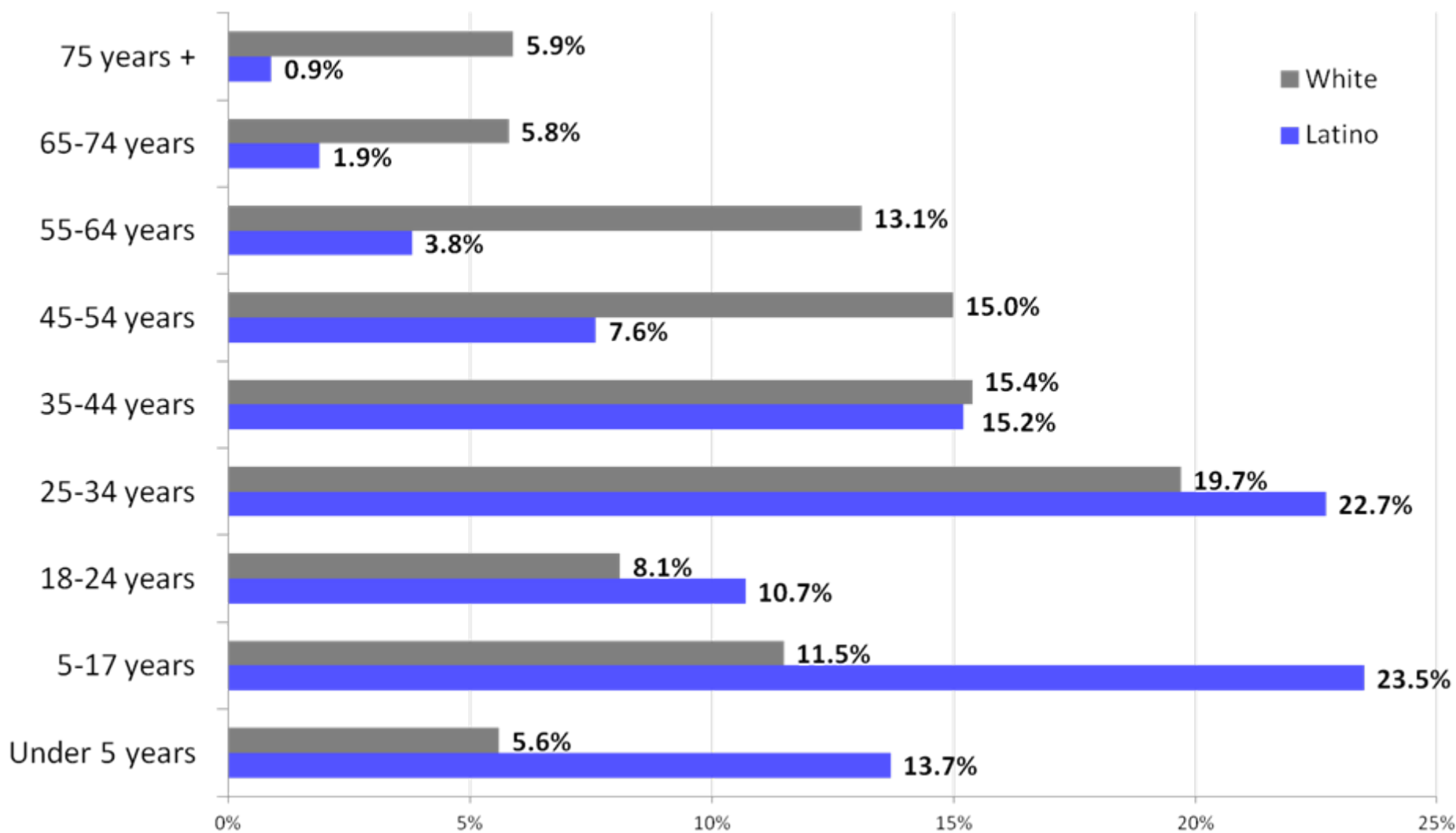
- **Culturally-verified count** = **91,272 Latinos** in 2010
= 12.4% of population



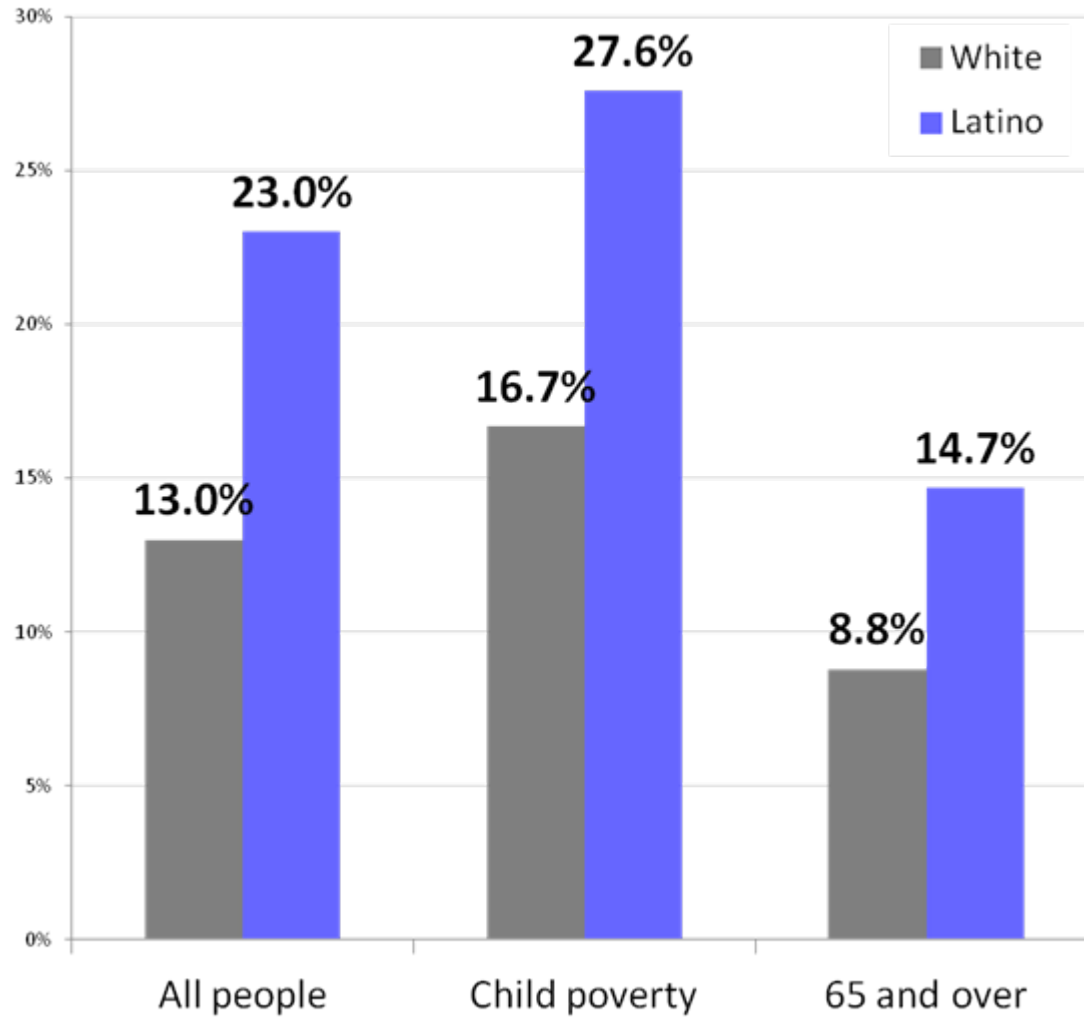
Latino composition, Multnomah County, 2009



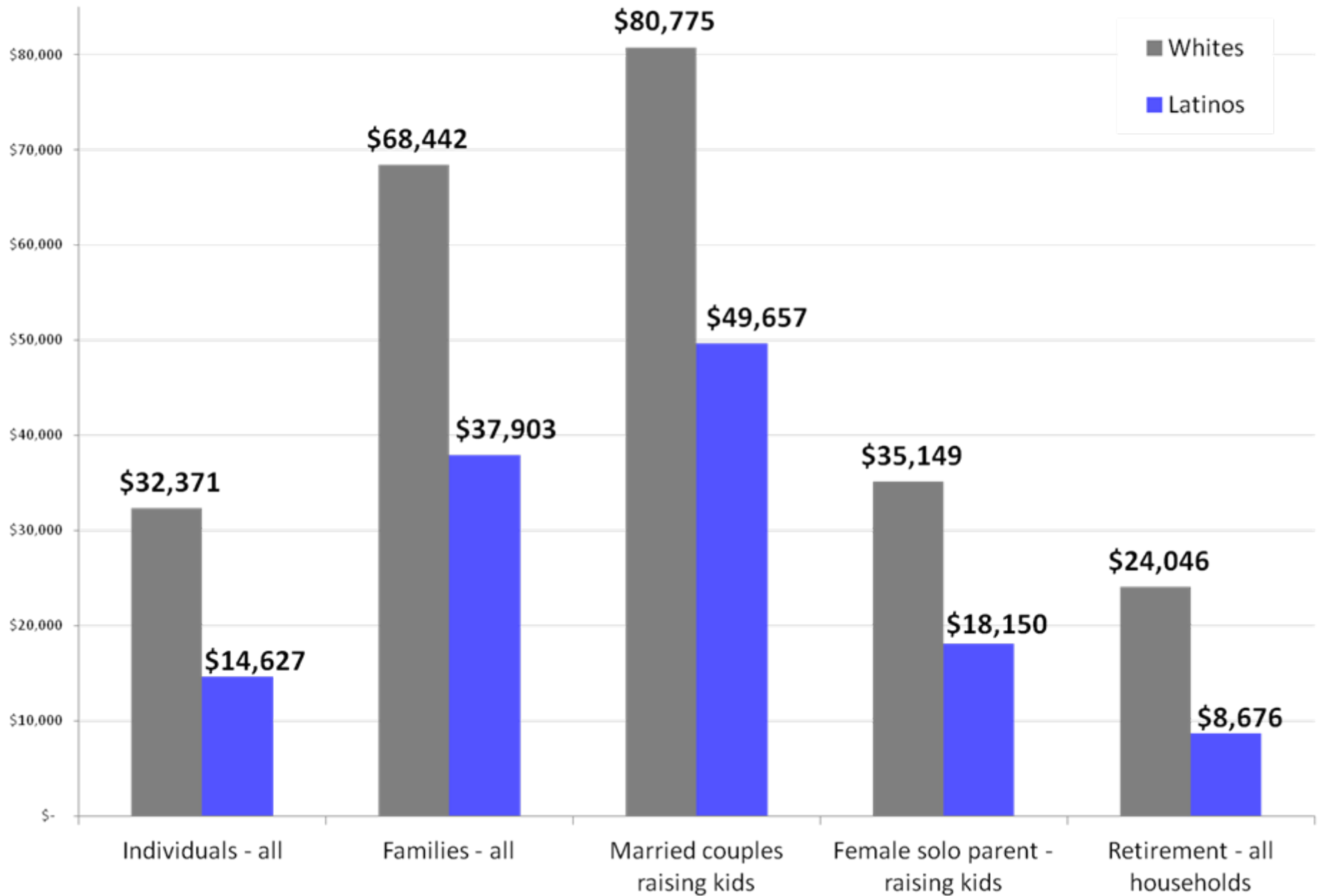
Age Distribution, 2009, Multnomah County



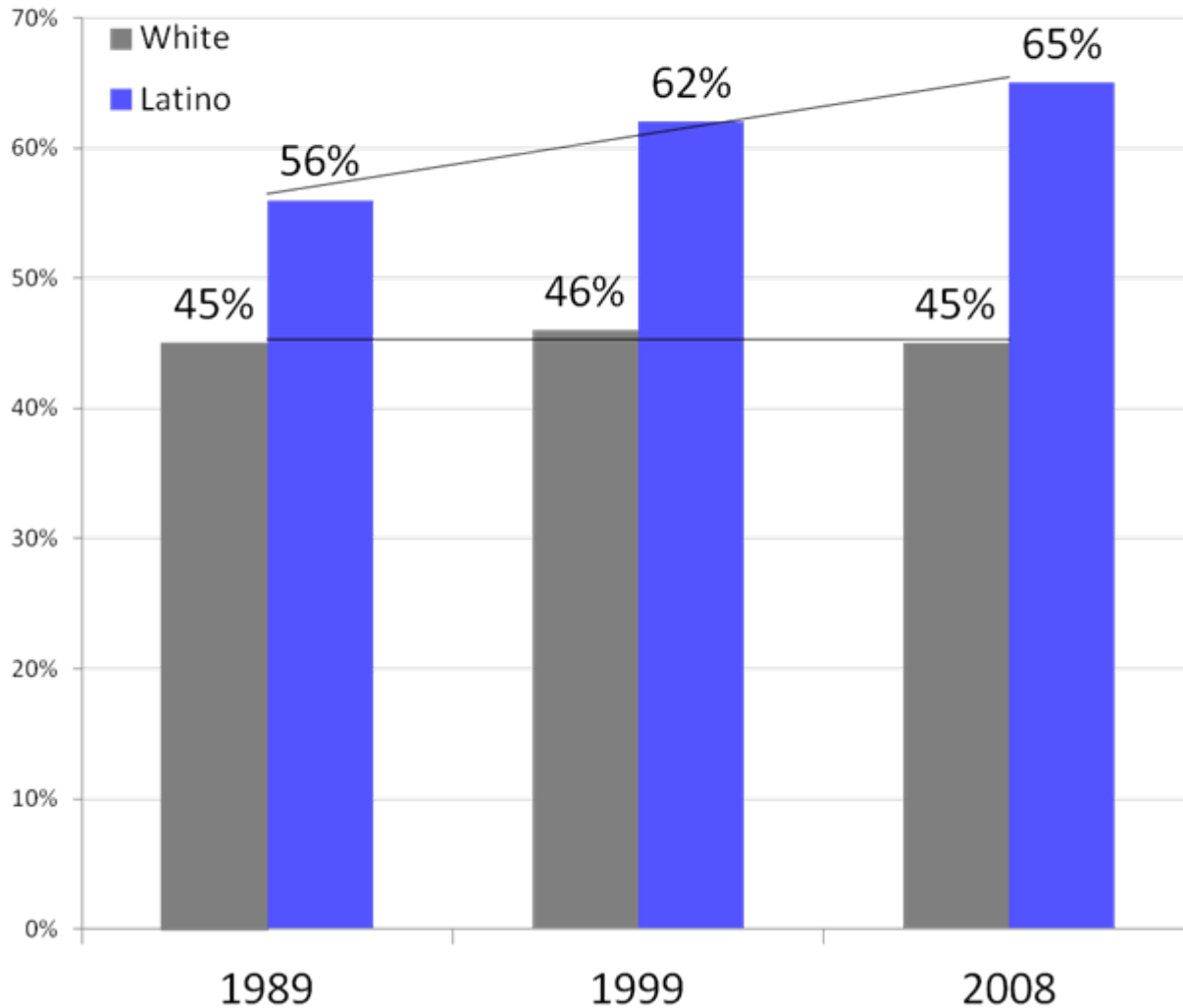
Poverty rates, Multnomah County, 2009



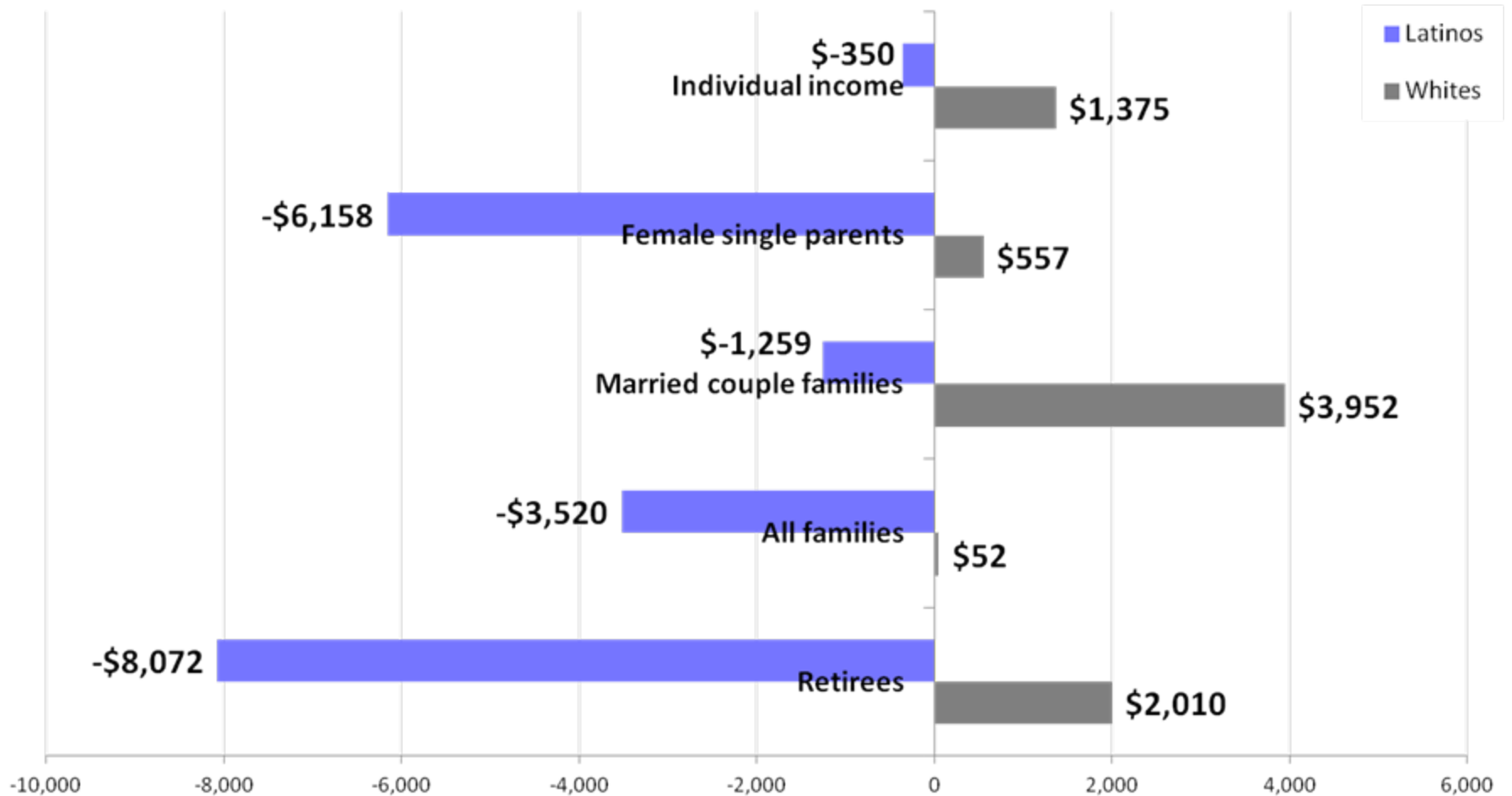
Annual incomes, Multnomah County, 2009



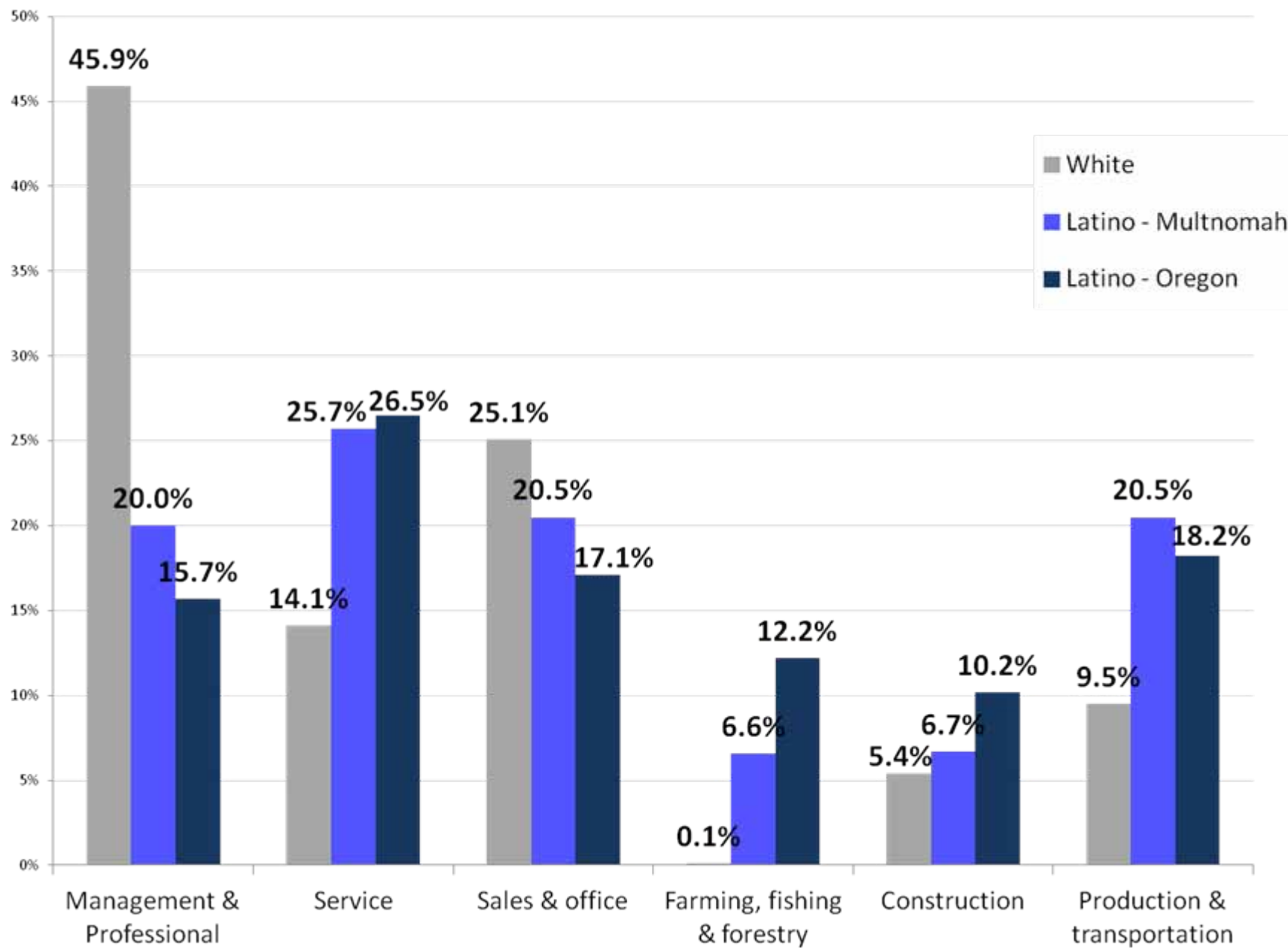
Households Earning Below Average Incomes in Multnomah County



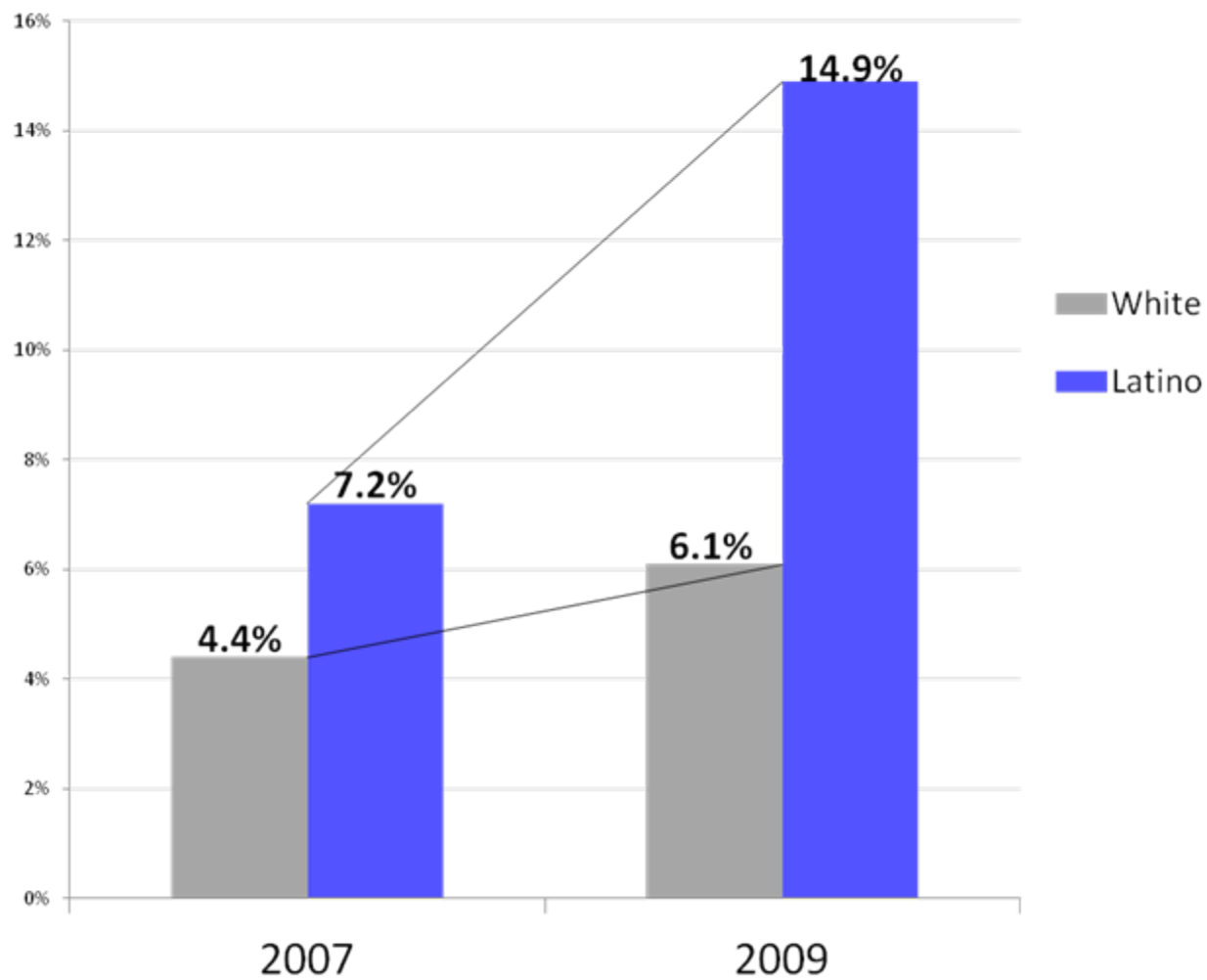
Impact on income of living in Multnomah county, 2009



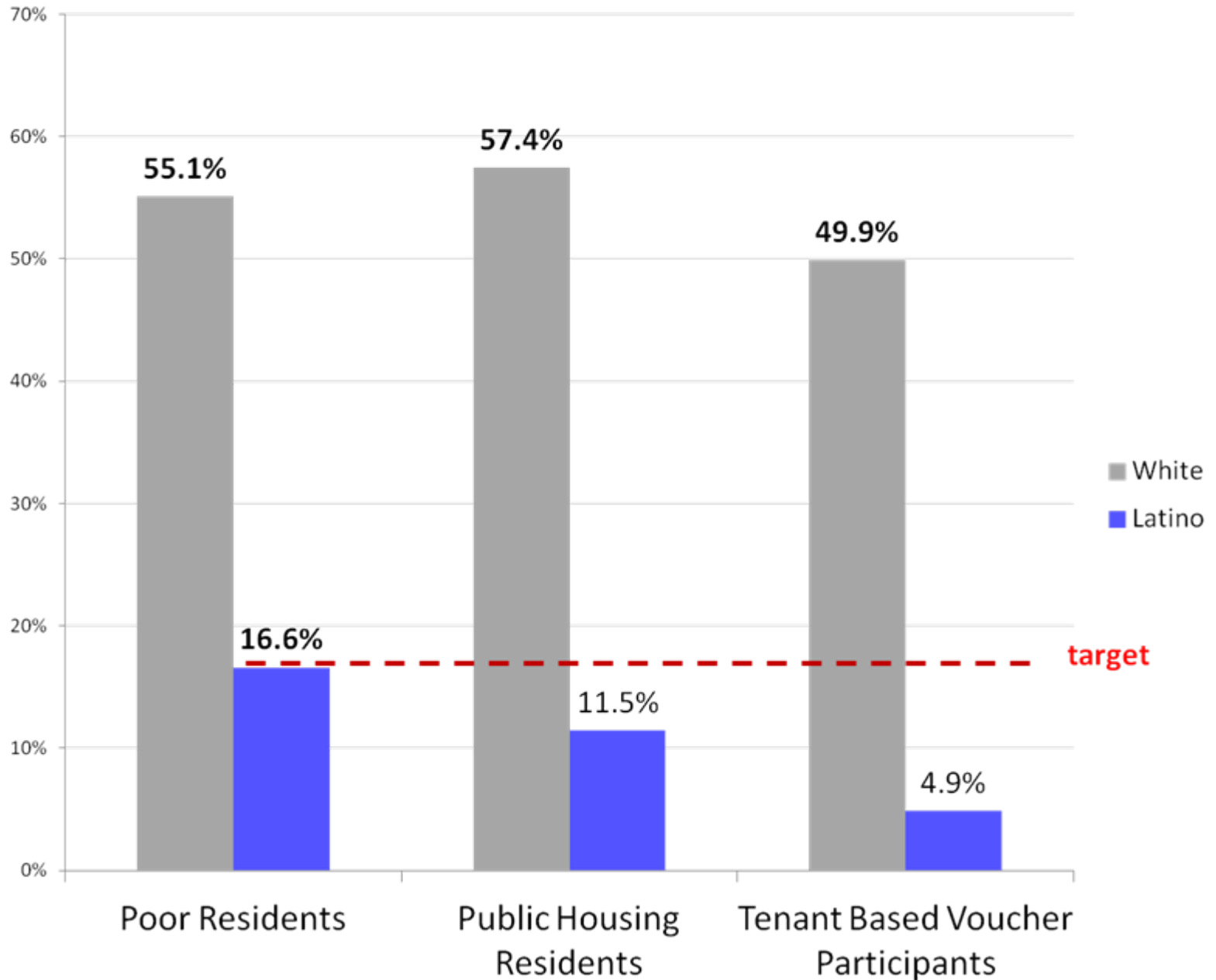
Occupations, Multnomah County & Oregon, 2009



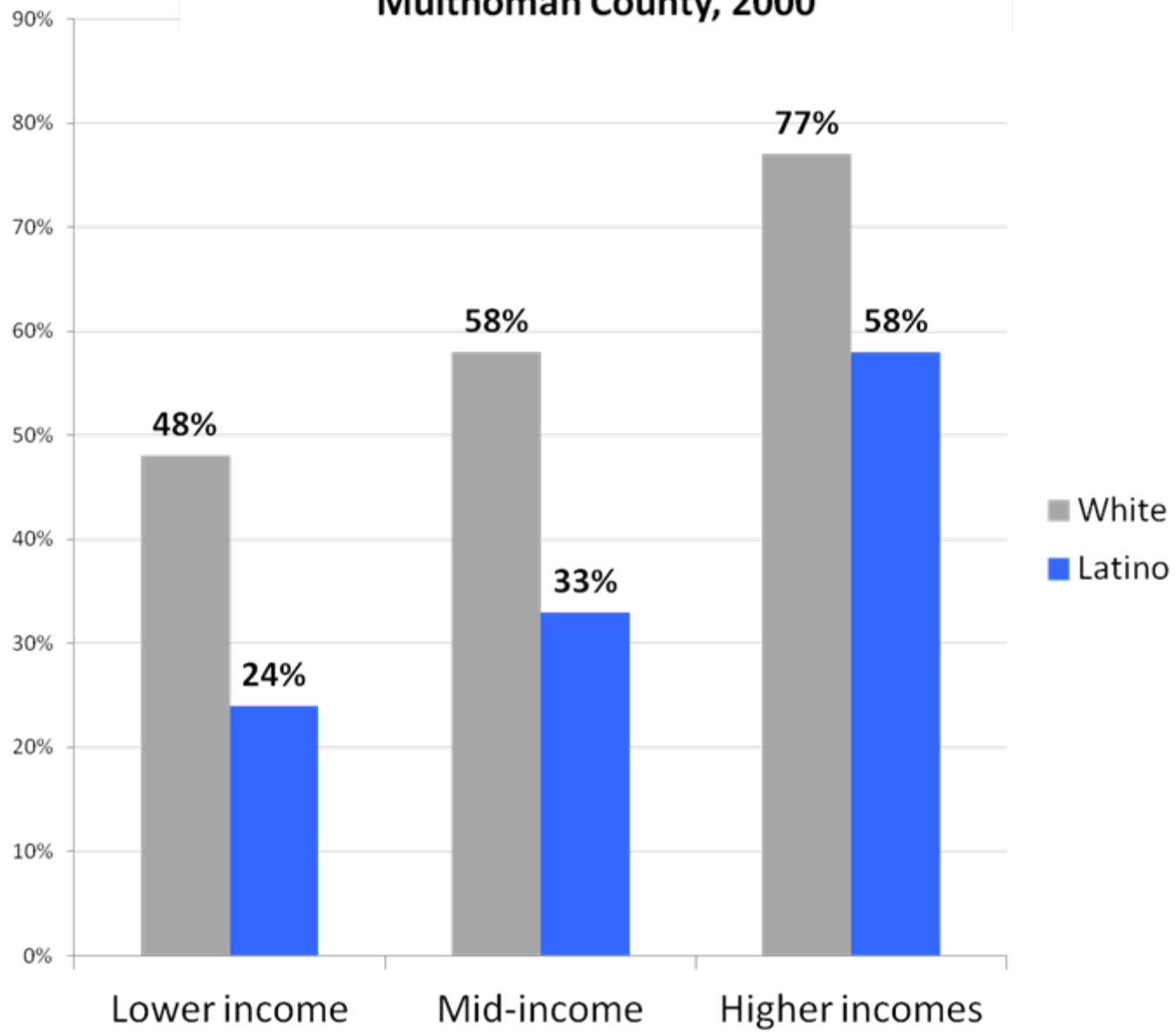
Unemployment Rate, Multnomah County, 2007 & 2009



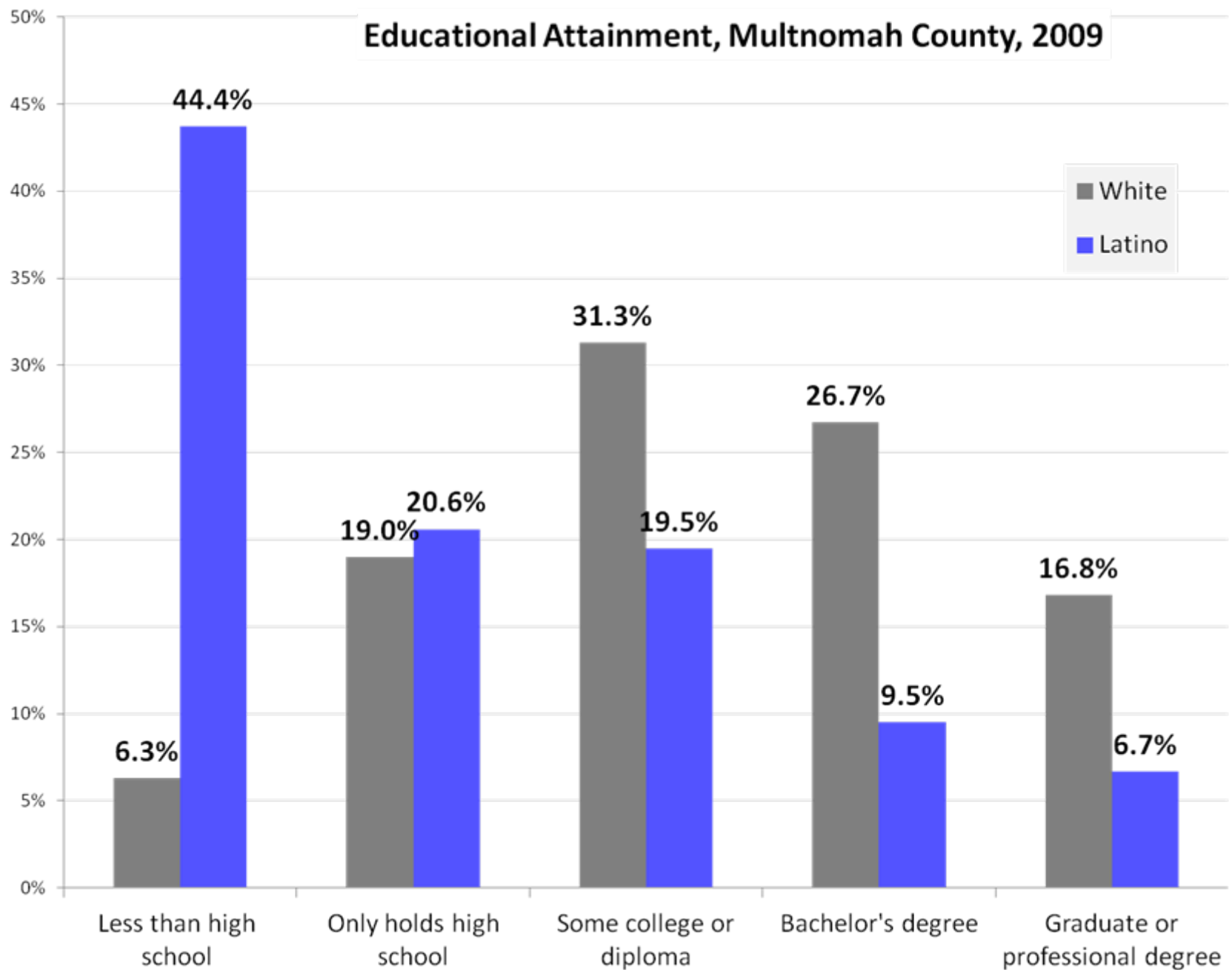
Poverty levels compared to access to housing support programs, Multnomah County, August 2010



**Homeownership rates at various income levels,
Multnomah County, 2000**

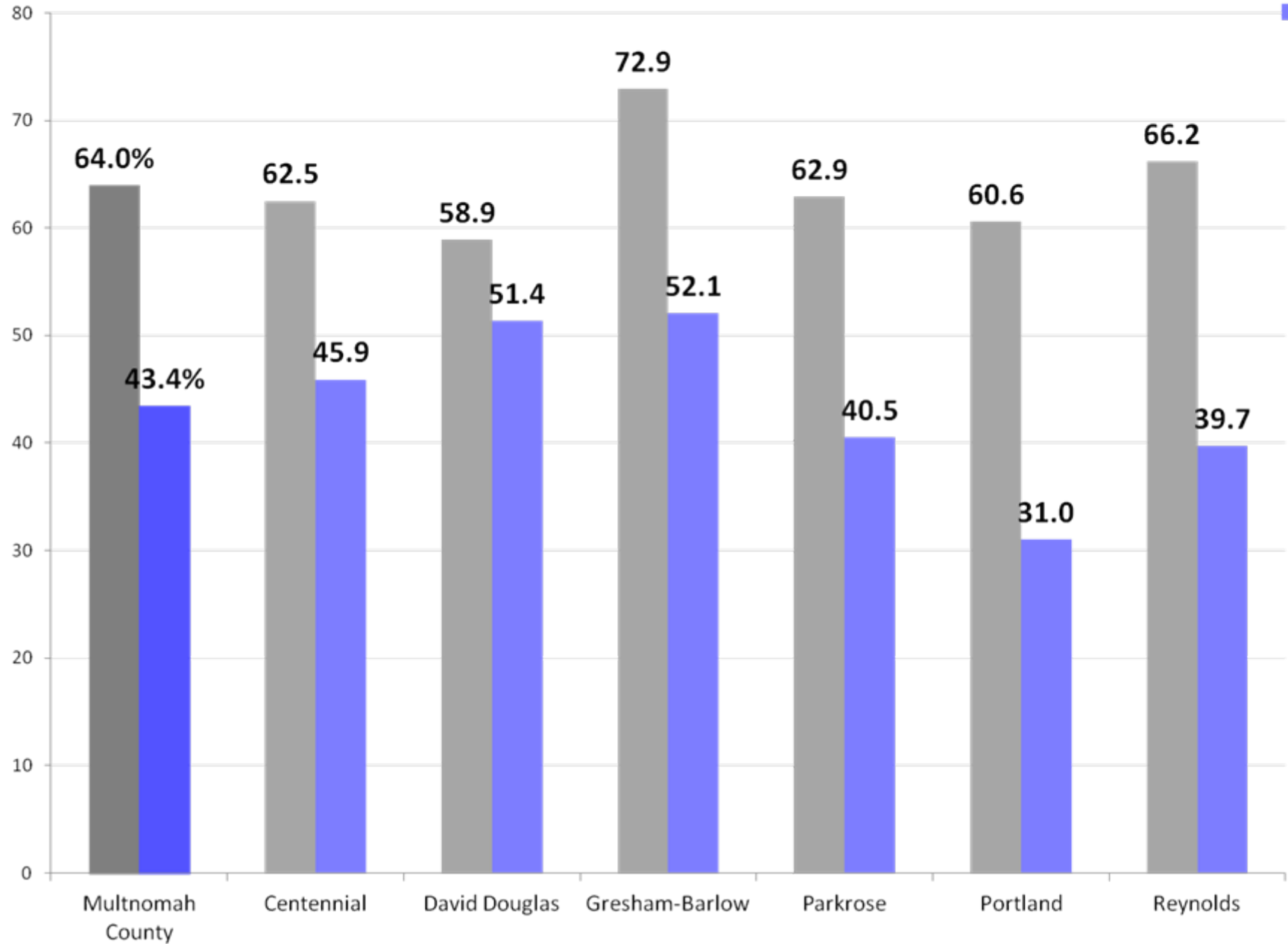


Educational Attainment, Multnomah County, 2009

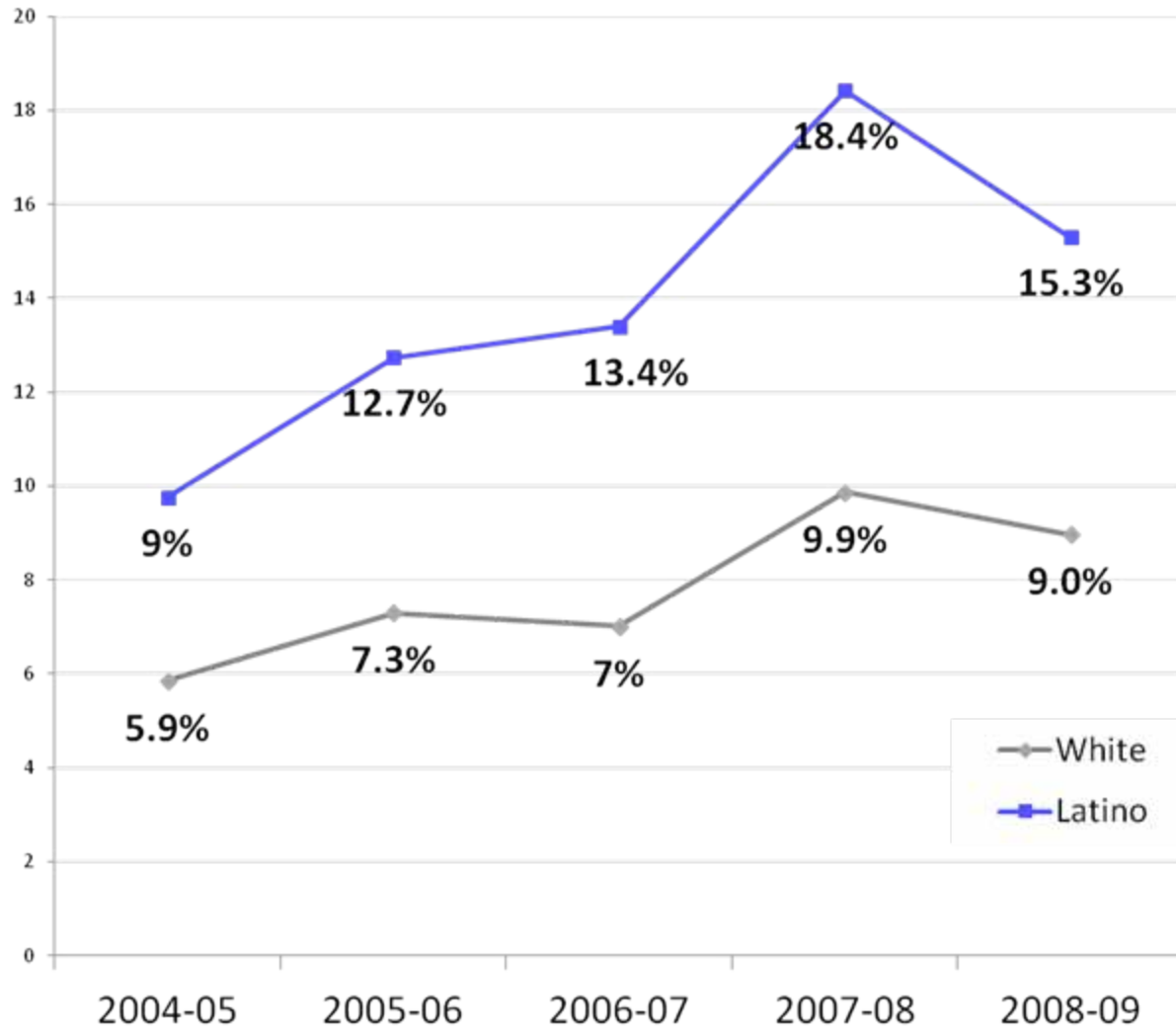


Cohort Graduation Rates, Multnomah County Districts (2009 Cohort)

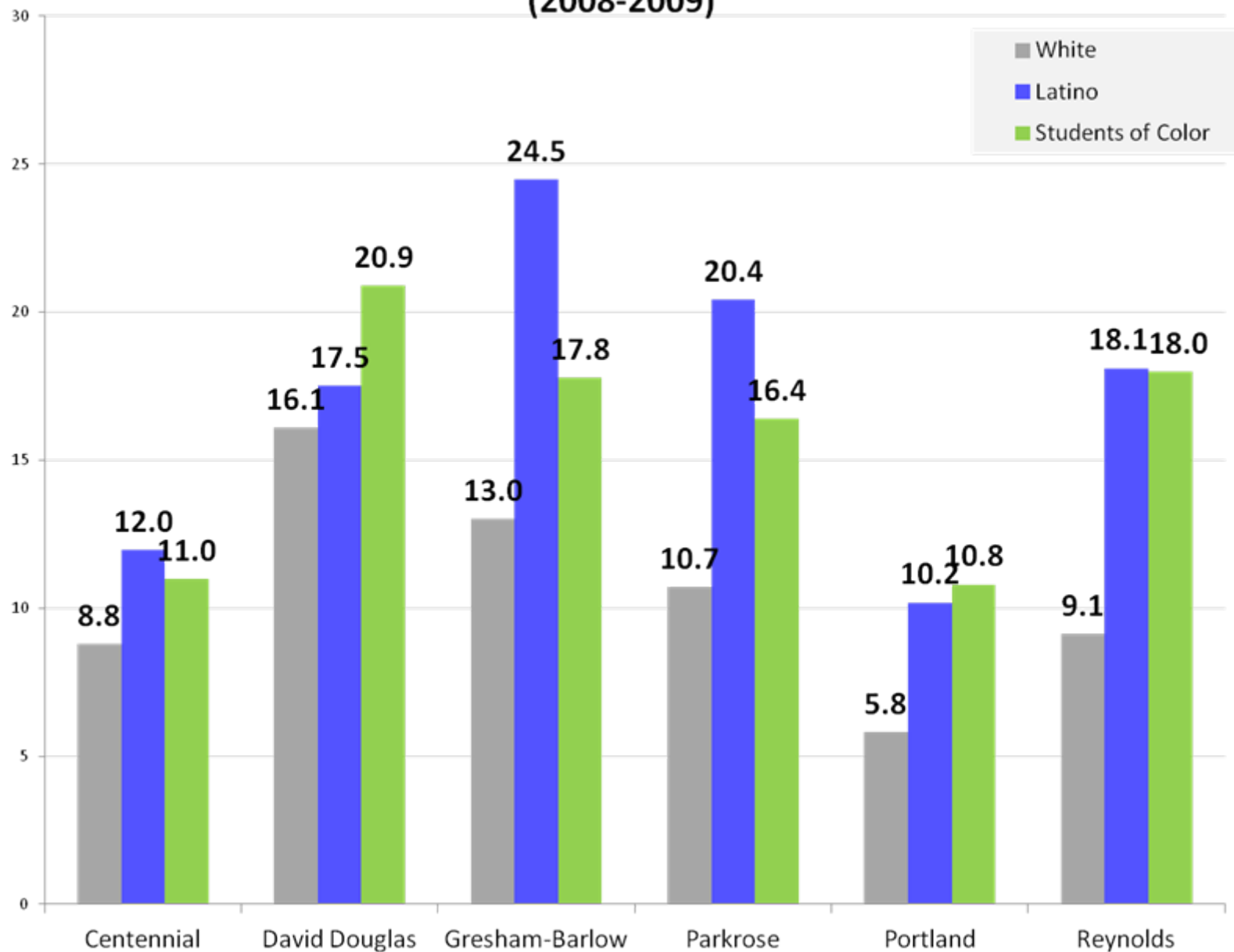
■ White
■ Latino



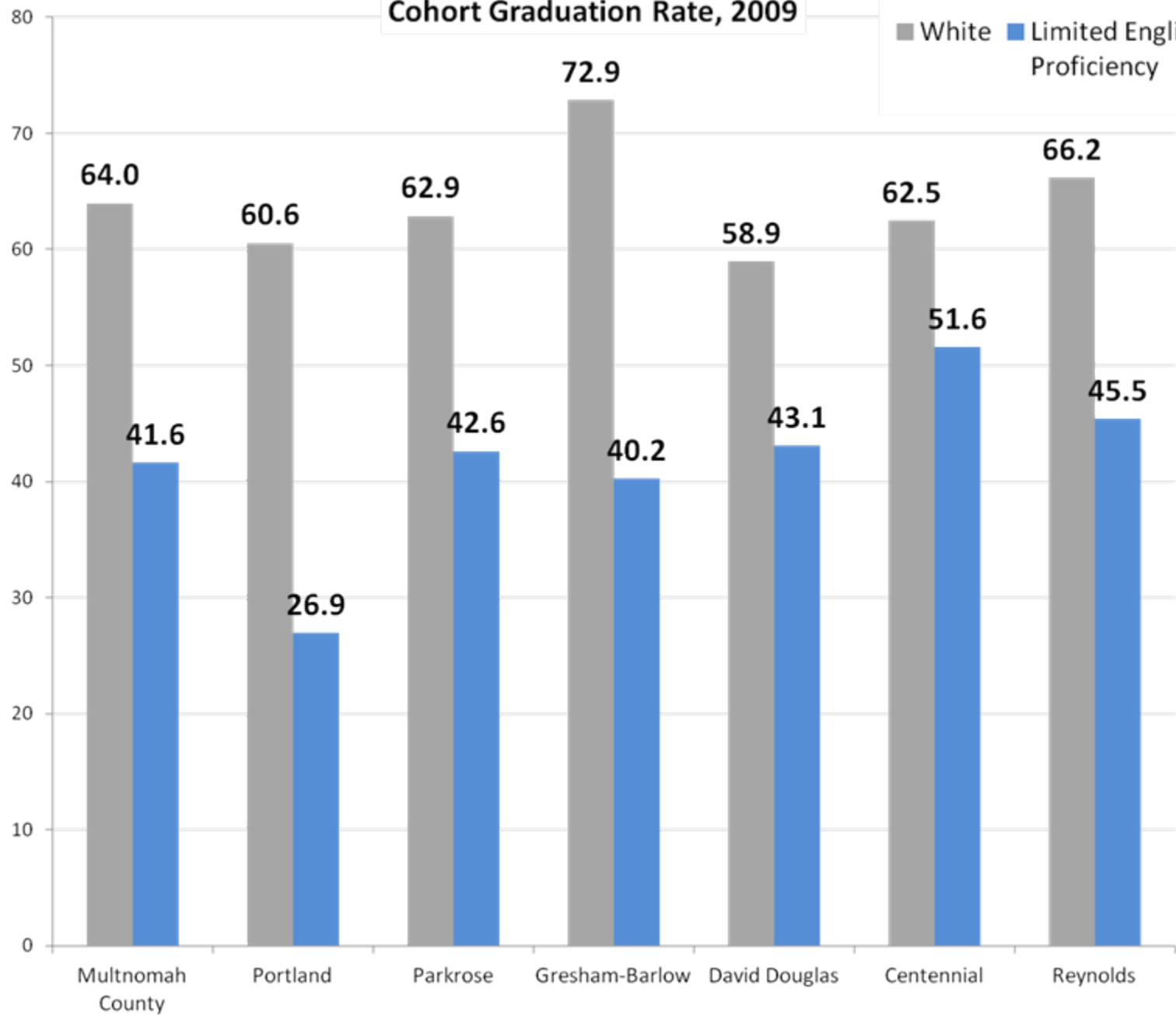
Suspension & Expulsion Rates, Multnomah County, 2004-2009



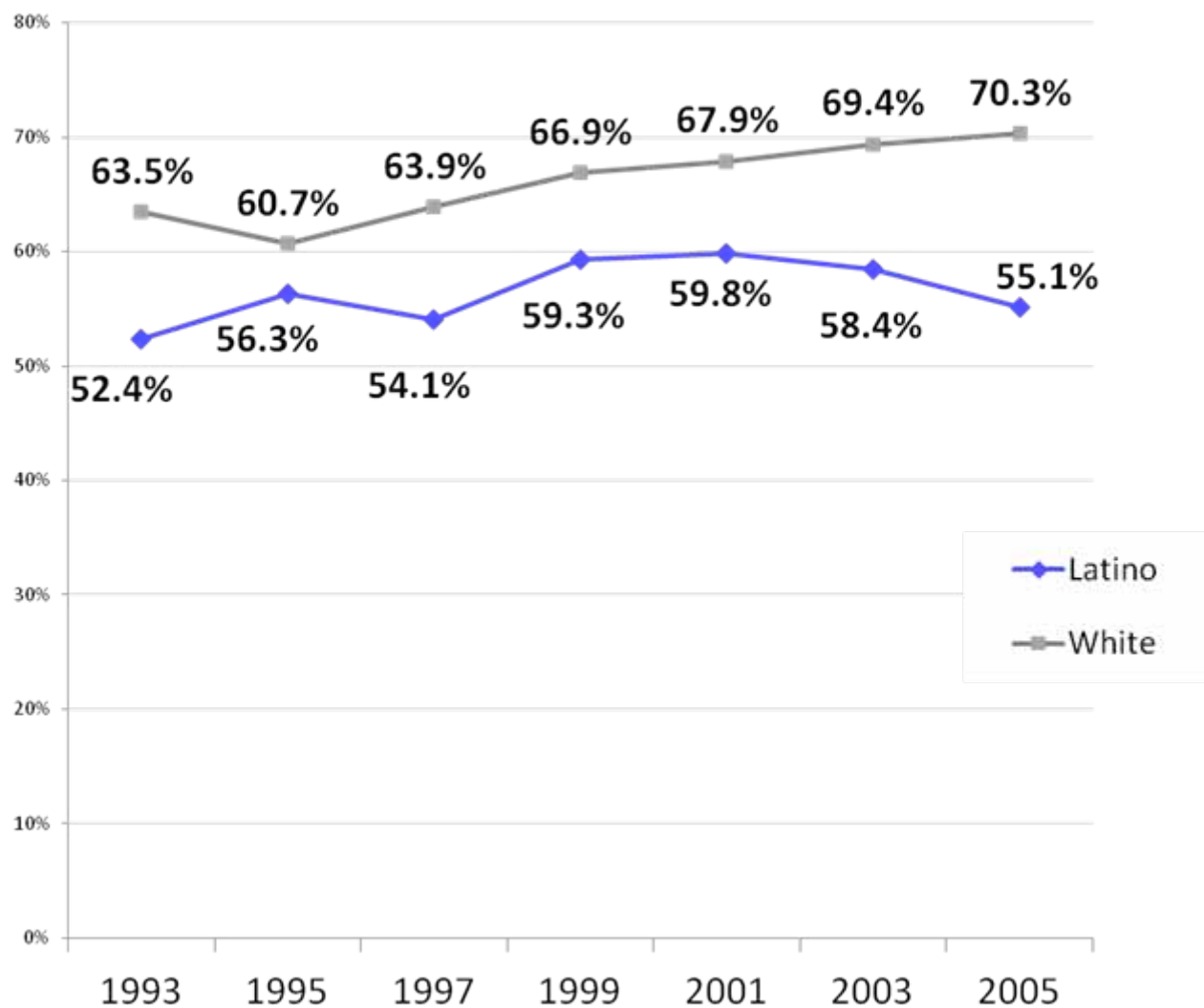
**Percent of Students with Suspension & Expulsions, by District
(2008-2009)**



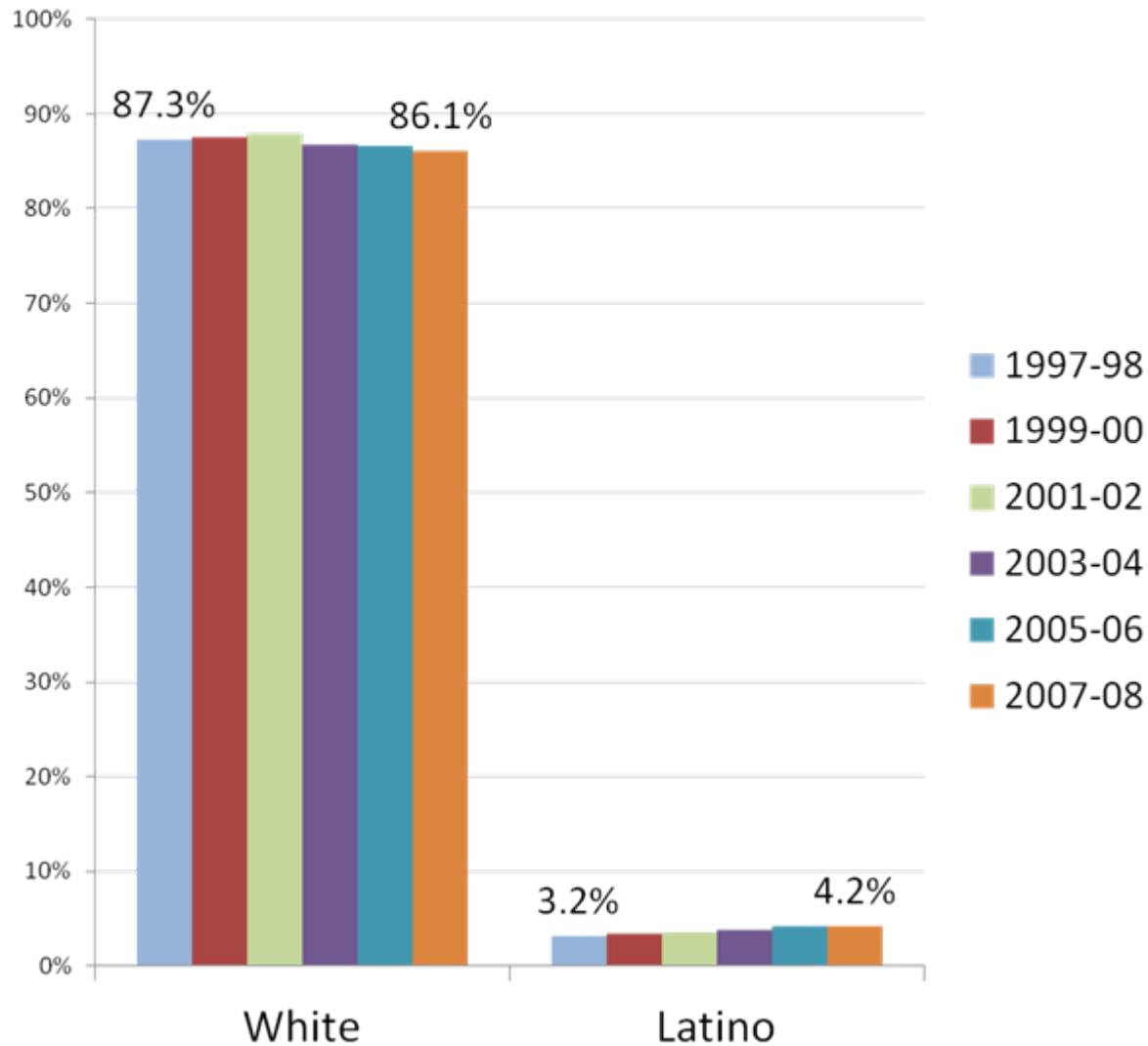
Cohort Graduation Rate, 2009



High school graduates entering college, Oregon

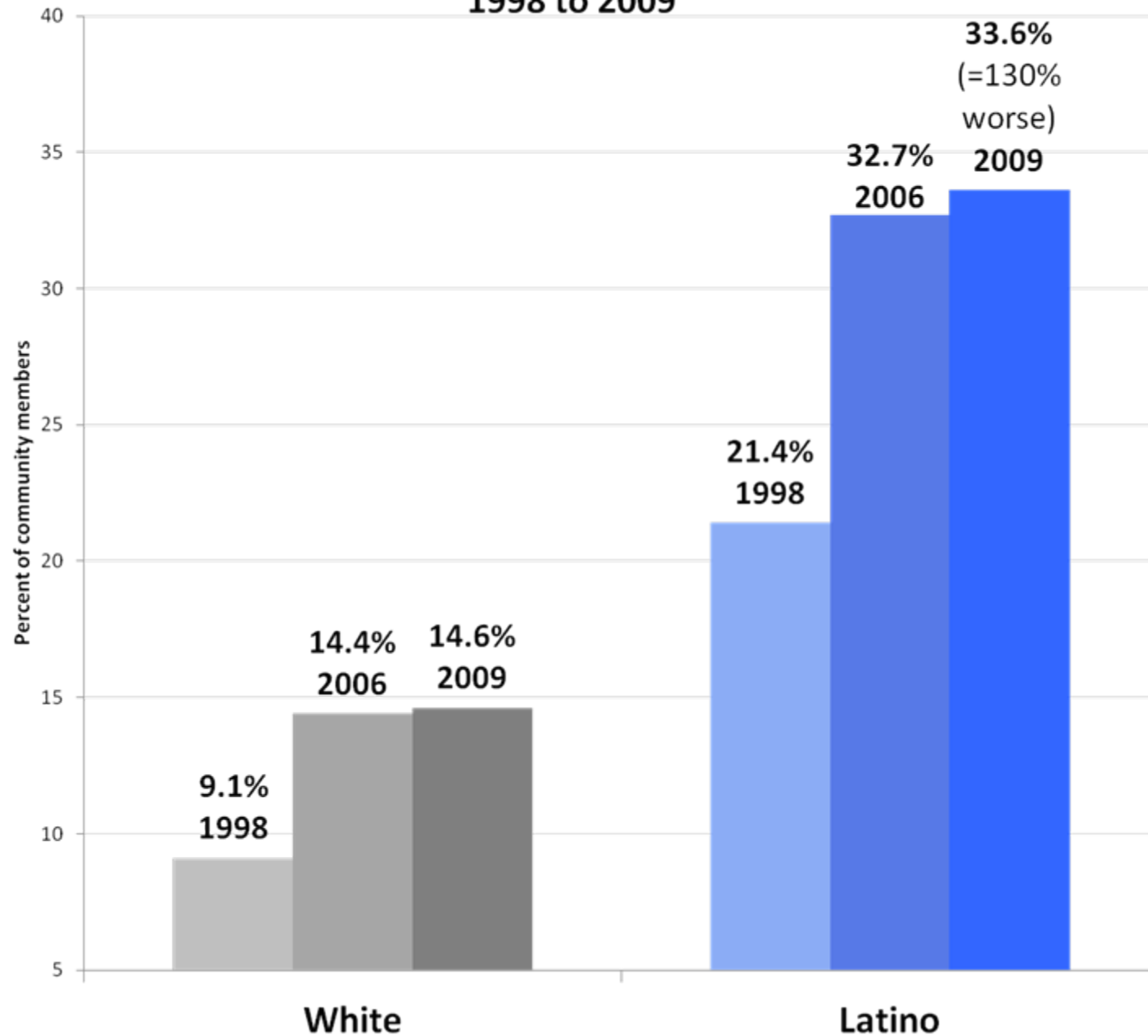


Degrees Awarded by Oregon's Public Universities, 1998 to 2008

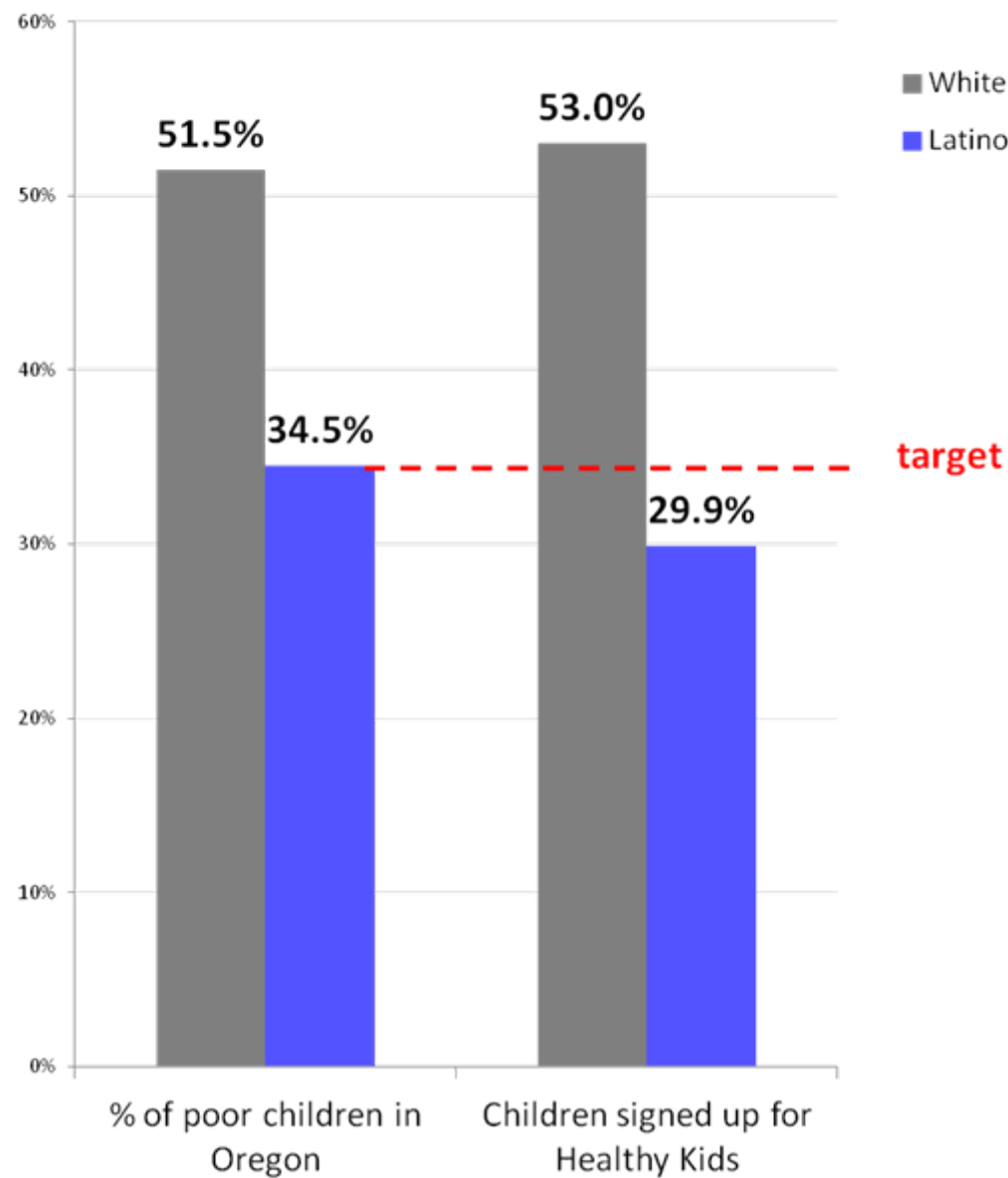


***But Latinos in 2008 are 11.0% of Oregon's population (and 8.0% in 2000)
... so disparity is worsening!***

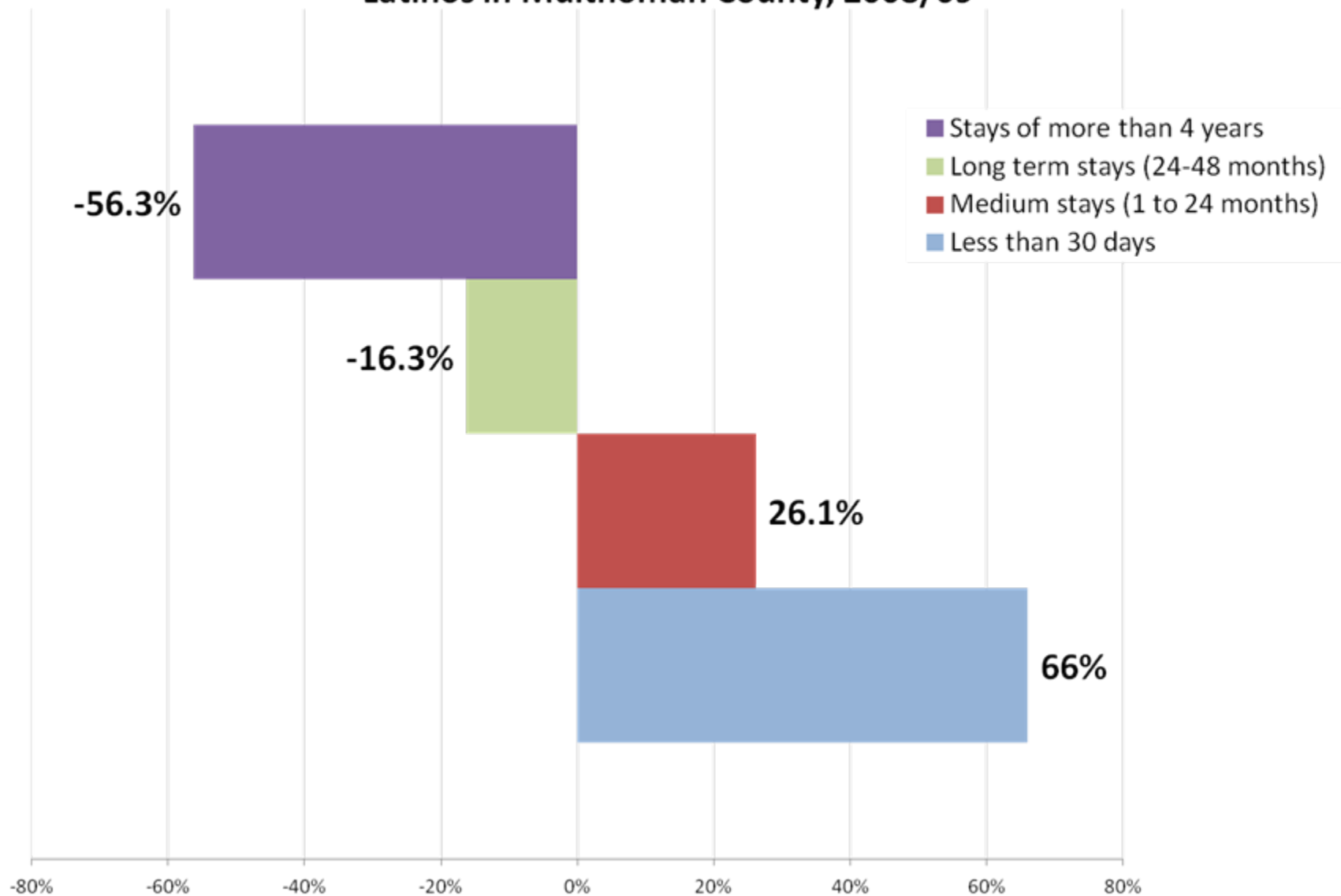
Percent of Oregonians Without Health Insurance, 1998 to 2009



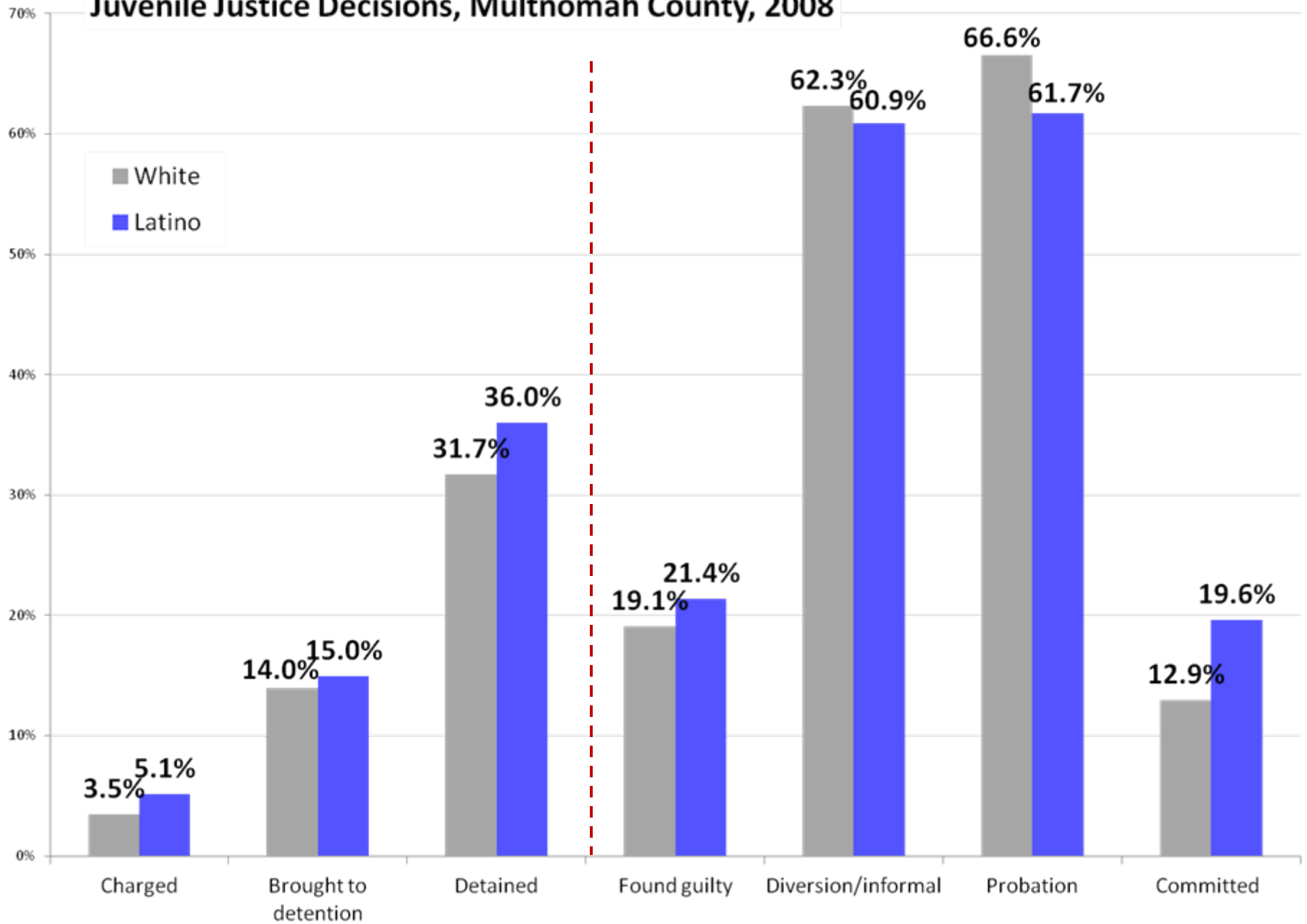
Enrollment in Healthy Kids, Oregon, September 2010



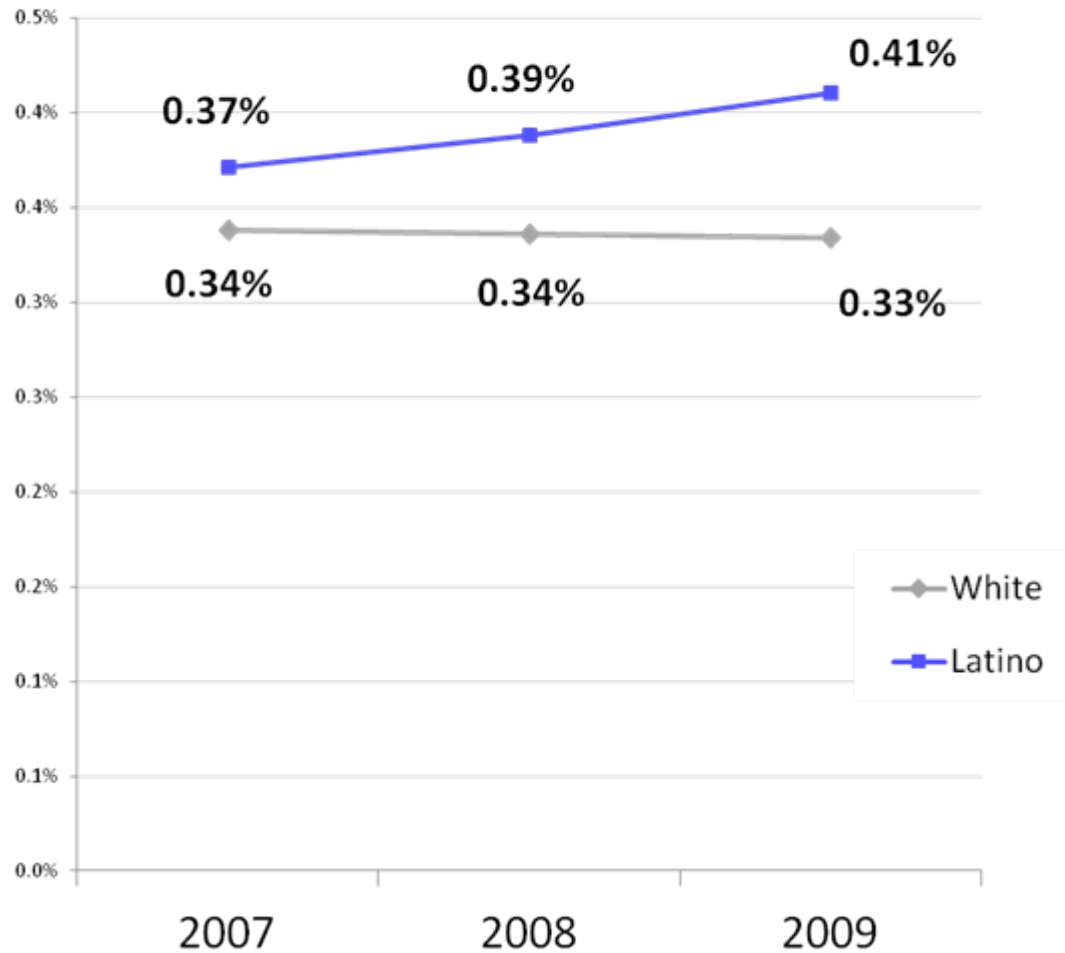
Disproportionality in Foster Care Length of Stay Latinos in Multnomah County, 2008/09



Juvenile Justice Decisions, Multnomah County, 2008



Incarceration rates as a % of the adult population, Oregon

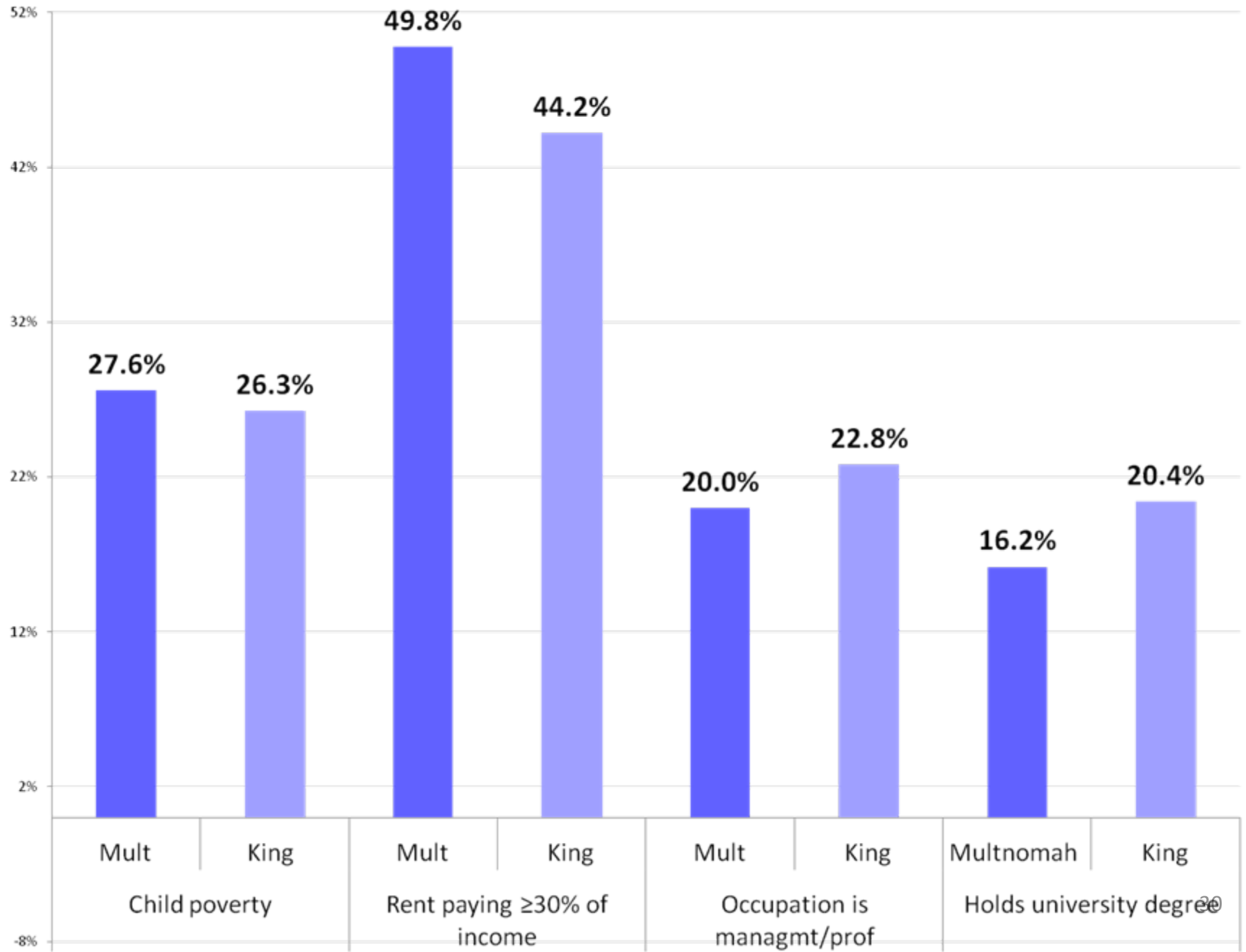


Under-resourcing Latinos (and over-resourcing White communities)

Oregon 2008		Size of Population	Amount of Foundation Funding
Whites		80.4%	90.4%
Communities of Color		19.6%	9.6%
	Latinos	11.0%	1.6%

- Latinos fare even worse when reflecting the numbers in poverty

Latinos, Comparison of Multnomah and King Counties, 2009



	Size of Disparity 2007	Size of Disparity 2009	Direction of Change
	% worse for Latinos	% worse for Latinos	from 2007 to 2009
Occupation			
Management & professional jobs	84.7%	29.5%	↑
Service jobs	91.6%	82.2%	↑
Poverty			
All Individuals	118.0%	76.9%	↑
Child poverty	166.7%	65.3%	↑
Elders (65+)	110.1%	113.4%	↓
Family poverty, kids <18	165.0%	151.9%	↑
Married couple families	512.9%	135.3%	↑
Female single parent, kids <18	36.6%	27.4%	↑
Housing			
Rent Burden	11.1%	32.4%	↓
Mortgage Burden	50.7%	10.4%	↑
Homeownership	75.5%	92.1%	↓
Home value (owners only)	18.8%	20.6%	↓
Education			
Attainment of a university degree	174.5%	168.5%	↑
Dropout rate	206.5%	162.5%	↑
Discipline rate	91.4%	70.0%	↑
High School graduation rate*	47.5%	41.1%	↑
Academic test scores - Math**	53.4%	30.1%	↑
Academic testing - reading/literature**	79.0%	35.4%	↑
Incomes			
Individual	137.0%	121.3%	↑
Family	87.3%	80.6%	↑
Retirement	37.9%	177.2%	↓
Female single parent	66.8%	93.7%	↓
Health			
Health insurance	127.1%	130.1%	↓
Unemployment			
Unemployment rate	63.6%	106.9%	↓
Criminal & Juvenile Justice			
Frequency of youth being criminally charged	16.0%	96.6**	↓
Frequency of youth receiving custody sentence	5.6%	22.3%	↓
Adult incarceration rate	8.8%	24.2%	↓
Comparison with King County			
Composite of 5 measures***	2.5%	-56.8%	↑

Bright Spots

- We affirm efforts to introduce culturally-specific funding into Multnomah County's SUN Service System
- Efforts to improve outreach during Census 2010 and current outreach efforts for the homeless count are also improved
- Multnomah County's DHS efforts – the Visibility Initiative holds promise to general sufficient information on the status of disparities, assess progress and shortcomings, and to involve us in advising on priorities for improvements

Recommendations

- **Culturally-specific programs**
 - Early childhood
 - Seniors
 - Youth violence prevention
- **Our community defines itself as an ethnic group and we do not organize ourselves around the western world view of geography equaling community**
- **Community verified data**

Recommendations (cont'd)

- Public statement from the Board committing to the advancement of racial equity and the elimination of racial disparities
 - With timelines, policies and resource allocation
- Policy advancing culturally-appropriate data and research practices across the County that makes disparities facing the Latino community visible
- Budgets & funding – meet with the CCC to find ways to focus existing resources to address these disparities

Next Steps . . .

- We want a commitment from the Board of Commissioners that you will meet with the CCC to discuss
 - A public commitment to racial equity
 - Culturally-appropriate data and research practices
 - The allocation of resources for culturally-specific programs
- Chair & Commissioners schedule a community dialogue with Latino organizations and community members and create an action plan to address disparities

Thank you!

- For more information
 - Julia Meier, CCC,
info@coalitioncommunitiescolor.org
 - The report is available online at
www.coalitioncommunitiescolor.org

