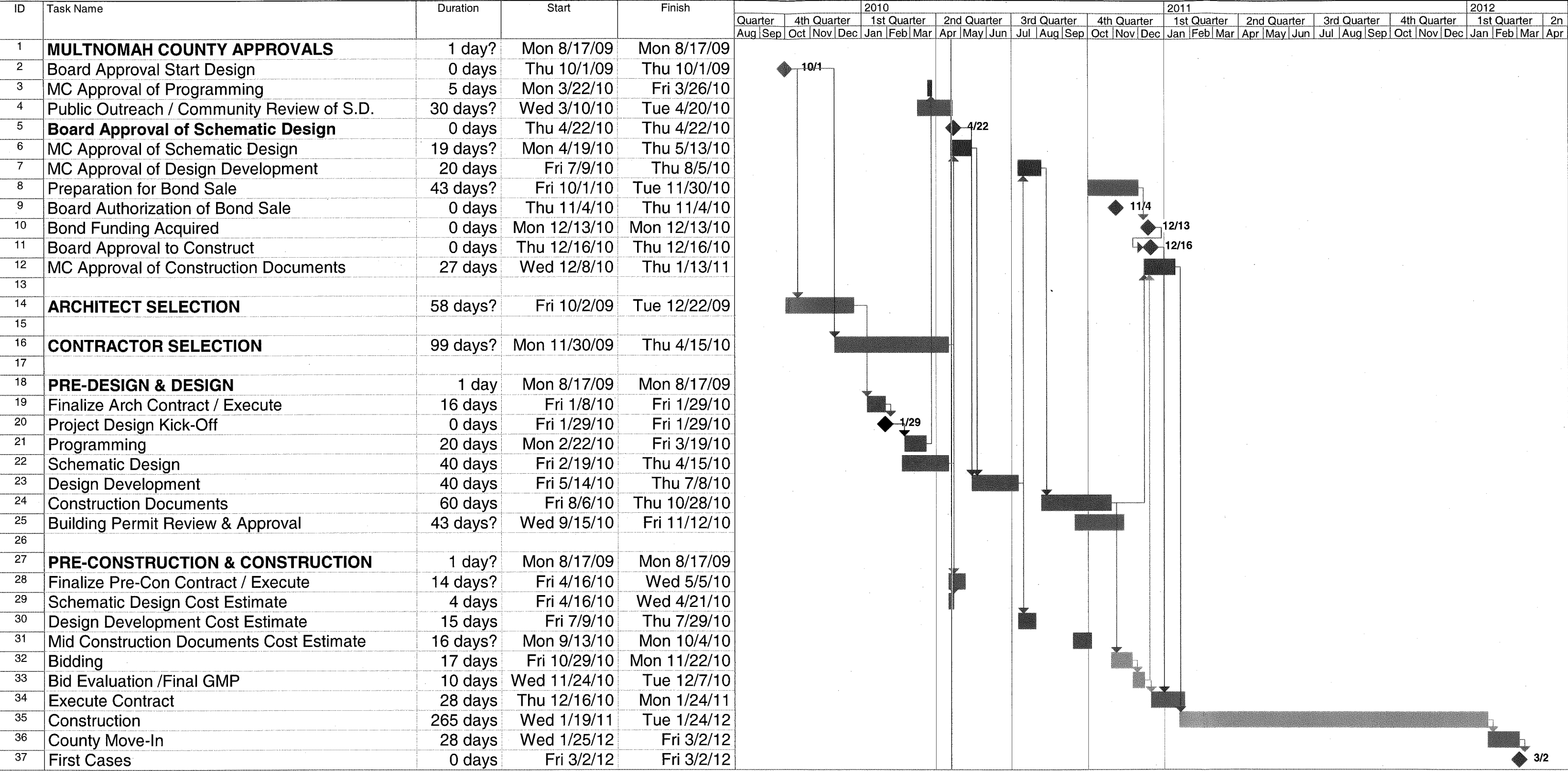
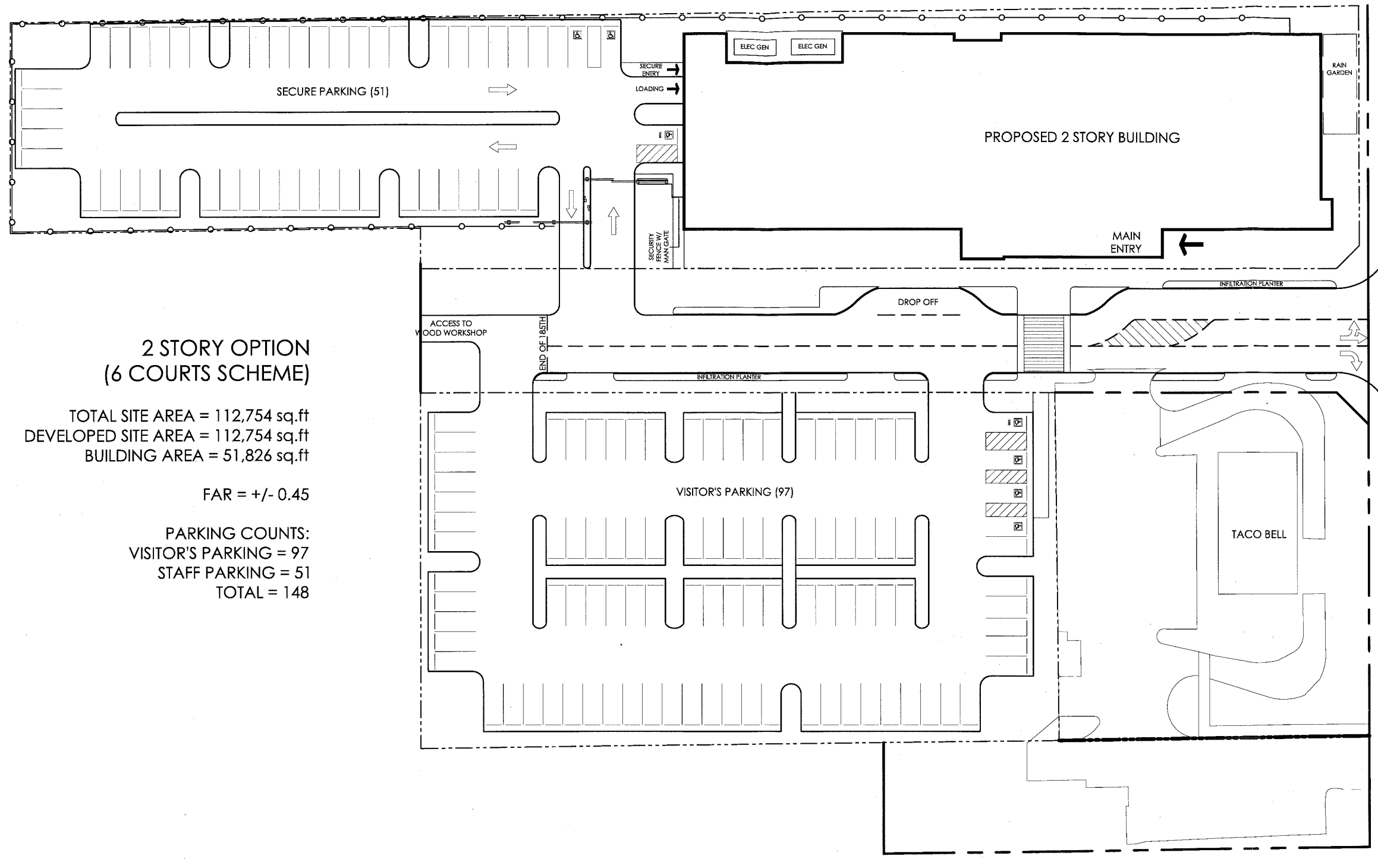


EAST COUNTY COURTS PROJECT
OVERALL PROJECT SCHEDULE
VERSION DATED APRIL 22, 2010






**2 STORY OPTION
(6 COURTS SCHEME)**

TOTAL SITE AREA = 112,754 sq.ft
 DEVELOPED SITE AREA = 112,754 sq.ft
 BUILDING AREA = 51,826 sq.ft

FAR = +/- 0.45

PARKING COUNTS:
 VISITOR'S PARKING = 97
 STAFF PARKING = 51
 TOTAL = 148

NORTH 
 SCALE: 1" = 50'

CONCEPTUAL SITE PLAN

LRS
 ARCHITECTS
 www.lrsarchitects.com

720 NW Davis
 Suite 300
 Portland OR 97209
 503.221.1121
 503.221.2077

**MULTNOMAH COUNTY
 EAST COUNTY COURTS**

SE STARK & SE 185TH
 GRESHAM, OREGON

PROJECT NAME: MULT. CO. EAST COURTS
 PROJECT NUMBER: 209285
 DATE ISSUED: APRIL 06, 2010
 REVISION:

SHEET: