



MULTNOMAH COUNTY OREGON

BOARD OF COUNTY COMMISSIONERS
ROOM 605, COUNTY COURTHOUSE
1021 S.W. FOURTH AVENUE
PORTLAND, OREGON 97204

GLADYS McCOY • Chair • 248-3308
PAULINE ANDERSON • District 1 • 248-5220
GRETCHEN KAFOURY • District 2 • 248-5219
CAROLINE MILLER • District 3 • 248-5217
POLLY CASTERLINE • District 4 • 248-5213
JANE McGARVIN • Clerk • 248-3277

AGENDA OF
MEETINGS OF THE MULTNOMAH COUNTY BOARD OF COMMISSIONERS
FOR THE WEEK OF
March 21 - 25, 1988

Tuesday, March 22, 1988 - 9:30 AM - Informal Briefing. . Page 2
Tuesday, March 22, 1988 - 1:30 PM - Informal Meeting . . Page 3
Thursday, March 24, 1988 - 9:30 AM - Formal. Page 4

Tuesday, March 22, 1988 - 9:30 AM

Multnomah County Courthouse, Room 602

1. Discussion of the work of the Youth Planning Network
subcommittee on Prevention Services to Children, Ages 0 - 7
- Ron Potrue and Diane Tutch

Tuesday, March 22, 1988 - 1:30 PM

Multnomah County Courthouse, Room 602

INFORMAL

- OK 1. Informal Review of Bids and Requests for Proposals:
 - a) Fiberglass Insulation on a requirements basis
 - b) Traffic Signal Installation
2. Presentation of draft forest land management plan for the Mt. Hood National Forest - TIME CERTAIN 1:30 PM (45 minutes)
3. Informal Review of Formal Agenda of March 24

Thursday, March 24, 1988, 9:30 AM
Multnomah County Courthouse, Room 602
Formal Agenda

REGULAR AGENDA

BOARD OF COUNTY COMMISSIONERS

- no?*
- R-1 In the matter of appointment of Michael Hill to the Department of Environmental Services Citizen Budget Advisory Committee
 - R-2 In the matter of appointment of Laurence H. Baker to the Multnomah County Council on Chemical Dependency
 - R-3 In the matter of appointment of Kenny Carr, Virginia Quiroz and Clyde Pack to the City/County Bicentennial Commission
 - R-4 In the matter of appointment of Dennis E. Maxwell to the Columbia Gorge Interpretive Center
 - R-5 In the matter of appointment of Gavin Vilander and Charlea Couckyut to the Multnomah County DUII Advisory Board

DEPARTMENT OF ENVIRONMENTAL SERVICES

- pres*
- R-6 In the matter of receiving and endorsing the Multnomah County's Advisory Committee report on the Columbia River Gorge Interpretive / Orientation Center, which recommends a gateway / orientation / interpretive center be developed at the primary west entrance to the Scenic Area (adjacent to Lewis & Clark State Park)

DEPARTMENT OF HUMAN SERVICES

- no?*
- R-7 Order in the matter of Authorizing Designees of the Mental Health Program Director to Direct a Peace Officer to Take an Allegedly Mentally Ill Person into Custody
 - R-8 In the matter of ratification of an intergovernmental revenue agreement between State Community Services / Low Income Energy Assistance - Weatherization Program and MCCA where by County will receive \$132,492 to conduct weatherization services to approximately 90 homes in mid and east Multnomah County during the period January 1 to December 31, 1988

SHERIFF'S OFFICE

- 80
15
- R-9 Order in the matter of accepting deed for Inverness Property from the City of Portland for jail purposes - public testimony invited - (TIME CERTAIN: 9:30 AM)

ORDINANCES - NONDEPARTMENTAL

- R-10 Second Reading - An Ordinance amending MCC 2.30.640 (G), relating to the membership of the Citizen Budget Advisory Committees
- LK Oboing
Clean copy
- R-11 Second Reading - An Ordinance amending MCC Chapter 6.31 by making the EMS Policy Board advisory to the Board of County Commissioners, and ratifying rules adopted by the EMS Policy Board, and declaring an emergency

NONDEPARTMENTAL

- Permy
Mason
- R-12 Budget Modification Nondepartmental #11 making appropriations transfers within Emergency Management in the amount of \$22,000, from Personal Services (\$17,200) and Professional Services (\$4,800) to Repairs & Maintenance (\$1,000), Operating Supplies (\$1,500), External Data Processing (\$2,000) and Capital Equipment (\$17,500) to replace equipment and supplies to continue operating the County's Hazardous Materials Response Unit
- W?
- R-13 In the matter of approving a draft Private Industry Council plan giving description of services and management systems that PIC will submit to the State for approval

Thursday Meetings of the Multnomah County Board of Commissioners are recorded and can be seen at the following times:

Thursday, 10:00 PM, Channel 11 for East and West side subscribers

Friday, 6:00 P.M., Channel 27 for Rogers Multnomah East subscribers

Saturday 12:00 PM, Channel 21 for East Portland and East County subscribers

0279C.68-72



MULTNOMAH COUNTY OREGON

DEPARTMENT OF GENERAL SERVICES
PURCHASING SECTION
2505 S.E. 11TH AVENUE
PORTLAND, OREGON 97202
(503) 248-5111

GLADYS McCOY
COUNTY CHAIR

MEMORANDUM

TO: Jane McGarvin, Clerk of the Board

FROM: Lillie Walker, Director, Purchasing Section

DATE: March 16, 1988

SUBJECT: FORMAL BIDS AND REQUESTS FOR PROPOSALS SCHEDULED FOR INFORMAL BOARD

The following Formal Bids and/or Professional Services Request for Proposals (RFPs) are being presented for Board review at the Informal Board on Tuesday, 3-22-88.

Bid/RFP No.	Description/Buyer	Initiating Department
B64-403-1977	Fiberglass Insulation on a requirements basis	Weatherization
	Buyer: Jan M Goddard Ex. 5111	Contact: Isaac Pankey Phone: 665-7189
B61-700-1975	Traffic Signal Installation	DES/Engineering
	Buyer: A M Hazen Ex. 5111	Contact: Richard Lulay Phone: X3630
	Buyer: Ex. 5111	Contact: Phone:

cc: Gladys McCoy, County Chair
Board of County Commissioners
Linda Alexander, Director, DGS

Copies of the bids and RFPs are available from the Clerk of the Board.

Page 1 of ____

TO: DAILY JOURNAL OF COMMERCE

Please run the following Classified Advertisement as indicated below, under your
"CALL FOR BID" section

MULTNOMAH COUNTY

Proposals Due: April 5, 1988 at 2:00 P.M.

Proposal No. B64-403-1977

Sealed proposals will be received by the Director of Purchasing, 2505 S.E. 11th
Ave., Portland, OR 97202 for:

Fiberglass Insulation on a requirements basis

Specifications may be obtained at: Multnomah County Purchasing Section

2505 S.E. 11th Avenue

Portland, OR 97202

(503) 248-5111

Lillie Walker, Director
Purchasing Section

PUBLISH: March 24, 25 & 28, 1988

AD1:PURCH2

Please run the following Classified Advertisement as indicated below, under your CALL FOR BIDS section.

MULTNOMAH COUNTY

TRAFFIC SIGNAL INSTALLATION

Bids Due April 19, 1988 at 2:00 P.M.
Bid No. B61-700-1975

Sealed bids will be received by the Director of Purchasing, Multnomah County Purchasing Section, 2505 S.E. 11th Ave., Portland, OR 97202 for:

Installation of traffic lights on S.E. Division Street at S.E. Main Street, and
S.E. 202nd Avenue.

Plans and Specifications are filed with the Purchasing Director and copies may be obtained from the above address for a \$5.00 non-refundable fee. CHECKS AND MONEY ORDERS ONLY. Plans and Specifications will not be mailed within the Tri-County area.

PREQUALIFICATION OF BIDDERS: Pursuant to the Multnomah County Public Contract Review Board Administrative Rules (AR 40.030) Prequalification shall be required for this project for the following class(es) of work: Traffic Signals

Prequalification applications or statements must be prepared during the period of one year prior to the bid date. Prequalification application or proof of prequalification by the Oregon Department of Transportation must be actually received or postmarked to Multnomah County by not later than 10 days prior to bid opening.

All bidders must comply with the requirements of the prevailing wage law in ORS 279.350.

Details of compliance are available from the Purchasing Section, Division of Administrative Services, 2505 S.E. 11th Avenue, Portland, OR 97202, (503) 248-5111.

Contractors and subcontractors must be licensed for asbestos abatement work if the project involves working with asbestos.

NONDISCRIMINATION: Bidders on this work will be required to comply with the provisions of Federal Executive Order 11246. The requirements for Bidders and Contractors are explained in the Specifications.

No proposal will be considered unless accompanied by a check payable to Multnomah County, certified by a responsible bank, or in lieu thereof, a surety bond for an amount equal to ten percent (10%) of the aggregate proposal. The successful bidder shall furnish a bond satisfactory to the Board in the full amount of the contract.

Multnomah County reserves the right to reject any or all bids.

LILLIE WALKER, DIRECTOR
PURCHASING SECTION

Publish March 31, April 1, 4, 1988

Informal
DATE SUBMITTED March 15, 1988

(For Clerk's Use)

Meeting Date 3/22/88

Agenda No. Int # 2 pm

REQUEST FOR PLACEMENT ON THE AGENDA

Subject: Mt. Hood National Forest

Informal Only* March 22, 1988 p.m.
(Date)

Formal Only _____
(Date)

DEPARTMENT County Chair DIVISION _____

CONTACT Fred Neal TELEPHONE 248-3308

*NAME(s) OF PERSON MAKING PRESENTATION TO BOARD _____

BRIEF SUMMARY Should include other alternatives explored, if applicable, and clear statement of rationale for the action requested.

Presentation of draft forest land management plan for the Mt. Hood National Forest

Time Certain 1:30

(IF ADDITIONAL SPACE IS NEEDED, PLEASE USE REVERSE SIDE)

ACTION REQUESTED:

☒ INFORMATION ONLY ☐ PRELIMINARY APPROVAL ☐ POLICY DIRECTION ☐ APPROVAL

INDICATE THE ESTIMATED TIME NEEDED ON AGENDA 45 minutes

IMPACT:

☐ PERSONNEL

☐ FISCAL/BUDGETARY

☐ General Fund

☐ Other _____

SIGNATURES:

DEPARTMENT HEAD, ELECTED OFFICIAL, or COUNTY COMMISSIONER: Blair McCoyth

BUDGET / PERSONNEL _____

COUNTY COUNSEL (Ordinances, Resolutions, Agreements, Contracts) _____

OTHER _____
(Purchasing, Facilities Management, etc.)

NOTE: If requesting unanimous consent, state situation requiring emergency action on back.

DISCUSSION DRAFT: March 2, 1988

Columbia River Gorge National
Scenic Area

INTERPRETIVE CENTER ADVISORY COMMITTEE

CONCEPT AND SITING RECOMMENDATIONS

Committee Members:

Richard Ross, Co-Chair
Pam Christian, Co-Chair
Bus Gibson
Teresa Kasner
Lillian Pitt
Dennis Maxwell
Mike Houck
Dottie Harrington/Tom Vaughn
Pat Parmenter
Chuck Herndon
Sam Cox
Elizabeth Woody
Ken Benshoff
Frank Arnold
Kris Olson Rogers ex officio
Sharon Nesbitt ex officio

Staff

Chris Moir, Commissioner Casterline's Staff
Fred Neal, Chair McCoy's Staff
Mark Hess, Staff, Multnomah County Planner
Susan Lorain, Commissioner Casterline's Staff

Introduction.

Multnomah County's Board of County Commissioners established a Citizen Advisory Committee on the Columbia River Gorge Interpretive Center on October 1, 1987 (Ordinance No. 561). This report reviews the Committee's efforts to date and contains a recommended concept for three Columbia Gorge interpretive centers.

Contents:

Recommended Site	Page 1
Gateway-Orientation Center Concept	Page 1-3
Site Selection Criteria and Discussion . .	Pages 4-10
Potential Gateway Center Contents.	Pages 11-15
Further Work of the Committee.	Page 16
Aerial Photos	Pages 17-18
Site and Vicinity Maps	Pages 19-21

Recommended Site.

The Committee recommends the "ODOT Site" adjacent to Lewis and Clark State Park as the preferred Interpretive Center location within Multnomah County. The twenty-plus acre parcel lies at the primary western gateway to the Columbia River Gorge National Scenic Area. The Committee concluded the site offers strong locational advantages and best suits their concept of a gateway/orientation/interpretive facility.

Gateway Interpretive Center Concept.

Before selecting a preferred site, Committee members attempted to define various roles interpretive centers may play to future Gorge visitors. After much discussion, the group concluded the Scenic Area lacks adequate facilities to orient and inform visitors; and further, Multnomah

County's geographic position in the Gorge makes it a logical choice for a gateway facility.

The Interpretive Center Advisory Committee recommends Multnomah County pursue a comprehensive approach to the Columbia River Gorge Interpretive Center question. We offer the following concept as one approach. It would define and connect the 80-mile long Scenic Area with three distinct, though related, interpretive centers.

We recommend development of three interpretive centers on the Oregon side of the Scenic Area. Two of these (one east and one west), should principally serve as gateway/orientation/interpretive centers for Gorge travelers. The "middle" center could focus more on in depth interpretation of Gorge phenomena (history, geology, culture). The three centers would avoid duplication in focus between each other and with other interpretive facilities in the Gorge, though some overlap would occur.

Gateway-Orientation Centers:

The two gateway centers would provide an organized system to introduce and inform visitors of choices available within the entire Columbia River Gorge National Scenic Area (i.e., attractions, landmarks, activities in Washington and Oregon). Their visitor services could perhaps extend to the region (i.e., nearby scenic waterways, Mt. Hood area, etc.). The gateway centers would identify and promote other interpretive facilities and experiences in the Gorge, and provide travelers varied opportunities. The centers could offer positive economic spin-offs by promoting destinations and visitor related businesses in the legislated and surrounding area.

The orientation centers would "index" the Gorge for visitors, with information on: museums, historic sites, cultural resources, parks, campgrounds, hiking trails, hotels, motels, bed and breakfast houses, waterfalls, beaches, boat launches, etc.. Various media could be used to disseminate information: computers with interactive data capabilities; multi-media presentation (connection with the inter-active database at the new convention center in Portland, OR); diorama displays as well as conventional approaches. The information should be accessible to educational institutions around the State to link Gorge resources with the studies of various disciplines.

The gateway/orientation centers would provide centralized places for booking reservations for boating, rafting, pack trips, overnight accommodations and offer complete trip planning services to Gorge travelers. A trip planning and reservation component would enhance visitor opportunities and provide comprehensive promotion of Gorge features. The service would augment efforts to draw visitors further into and through the Scenic Area and create economic development opportunities and by encouraging visitors to prolong their stay in the Gorge.

All three centers should include live and interactive exhibits, both indoors and out, which change or rotate through the seasons. These could include: Native American history, geographic and visual displays; scale models of Gorge topography, volcanic and hydrologic history; cultural resources, and native flora and fauna. The exhibit programs require a regional strategy of coordination between the three centers and other interpretive facilities in the Gorge and region.

Region-wide highway signage, particularly for the gateway centers, should be stressed to identify the facilities to drivers well in advance. Signage programs could coordinate with the Oregon Tourism Alliance projects as well as local efforts to develop Scenic Area signage with the Bi-State Commission, Forest Service and both State Highway Departments.

The Centers would be linked thematically. Some potential themes include:

- Gateway to the Pacific Northwest and Exploration Themes
- The Columbia River
- The Pre-history and History of European Settlement in the Gorge

Each would also develop its own unique theme related to its site or vicinity. For example, the west gateway could develop a waterfall theme; the east gateway could emphasize Native American culture and history; the central facility could focus on geology and hydropower or the Oregon Trail and pioneer settlement history.

Siting Criteria:

The Committee developed 15 criteria for reviewing potential interpretive center sites in the County. This Section presents the criteria and offers comments and discussion regarding the preferred site.

The Committee identified 14 sites in the County for analysis. Criteria were applied to a matrix which the group used to select its top five candidate sites. The following list contains these five sites in order of preference:

1. ODOT site at Lewis and Clark State Park
2. Rooster Rock State Park
3. Dodson Area
4. Reynolds Aluminum Property (north of I-84 and Lewis and Clark State Park)
5. Bridal Veil Community

Criteria and Discussion.

Criteria #1. A gateway/interpretive center should possess good access to multiple transportation modes. It should have convenient access to the Interstate-84 Freeway and the Historic Columbia River Highway.

Comments:

The ODOT site possesses significant access advantages over other sites considered. It lies adjacent to an existing freeway interchange with a direct connection (via Jordan Road) to the Historic Columbia River Highway. Rail access could be provided to the site if later developed for Gorge excursions. Portland International Airport lies ten miles west of the site, Troutdale Airport is within one mile.

Criteria #2. The site size should adequately accommodate proposed structures and contain sufficient area for parking cars, recreation vehicles and tour busses.

Comments:

The site size provides ample space for facilities anticipated in an orientation/interpretive center. The property contains 23.52 acres. This figure does not include nearly eight acres of State Parks Division property west of the ODOT parcels (e.g., the ramps and gravel parking area); (Map # 3).

Staff estimates approximately 15 to 18 acres of the site could be devoted to an orientation/interpretive center, including associated parking and outdoor amenities. The balance of the area would likely be required for redesigned freeway ramps, natural wetlands protection and parking for Lewis and Clark State Park.

Criteria #3. The site should have both visual and physical river access.

Comments:

The site lacks access to the Columbia River. However, the committee concluded other locational assets outweighed this shortcoming. Several members considered the site's proximity to the Sandy River an important amenity which partially offsets the lack of Columbia River access. Some suggested incorporating an observation deck or tower into the building design to provide views of the Columbia River to the northeast. The committee noted too that physical access to the Columbia River was difficult at most other sites. At Rooster Rock, with its extensive river access, other recreational uses would compete with a gateway/interpretive facility.

Criteria #4. An interpretive center site should display scenic and aesthetic qualities.

Comments:

The ODOT site possesses several aesthetic resources and opportunities. Committee members considered Broughton Bluff, the Sandy River and Lewis and Clark State Park important nearby aesthetic assets. The site itself contains several mature oak trees and wetland areas which may provide aesthetic design opportunities on-site.

However, several committee members considered this site one of the least aesthetic or scenic, principally citing its location between the freeway and railroad and lack of topographic relief. Interestingly, this perception swayed some to select the ODOT site for development of an interpretive center; many felt other more scenic candidate sites would experience greater disruption in order to accommodate the anticipated structures and parking. In addition, thoughtful site design at this location should enhance many visitor's first impressions of the National Scenic Area.

- Criteria #5. An interpretive center site should provide opportunities to interpret natural features with minimal impacts to those features.

Comments:

The preferred site offers varied opportunities to interpret natural features. The site contains a wooded wetland area which could be incorporated into the interpretive center site design. The Broughton Bluff rock formations rise nearly 400 feet above the site just south of the railroad tracks. Lewis and Clark State Park offers a nature trail, and access to the Lower Columbia Gorge Trail (#400). A pedestrian rail crossing (i.e., footbridge or tunnel) could easily link the orientation center with these nearby features.

An observation deck or tower could be incorporated into the building design to offer views of wetlands, flood plains (north and east of the site) as well as surrounding hills and rivers.

Criteria #6. The site selected should have physical characteristics (i.e., soils, topography) suited to the anticipated construction.

Comments:

The ODOT site appears well suited to accommodate an orientation/interpretive center. The site is generally flat with few natural constraints to development. A small portion of the site lies below the 100-year flood elevation (of the Sandy River). Soil characteristics, though not documented, appear quite sandy; this may require additional engineering of proposed facilities.

Criteria #7. The site selected should have feasible access to utilities.

Comments:

The Committee assumed the site's proximity to Troutdale's urban services would offer more opportunities to provide utilities. Troutdale representatives express willingness to explore and pursue available options for utility provision (i.e., water and/or sewer).

Since the site is beyond Troutdale's city limits and the Metropolitan Urban Growth Boundary, extension of Troutdale water or sewer service would require Portland Metropolitan Area Local Government Boundary Commission approval.

If an on-site water system and/or sewage disposal system is feasible, approval would be required from the Boundary Commission. Note: A subsurface septic system would not require Boundary Commission approval.

The site's proximity to Troutdale should provide greater opportunities for police and fire protection.

Criteria #8. The gateway-interpretive center site should be a logical orientation point for most Gorge visitors.

Comments:

The committee considered the ODOT property the superior site when weighing this criteria. In particular, its visible location along the eastbound lanes of Interstate-84 and at the western entrance to the Scenic Area is unsurpassed.

The group reviewed 1986 traffic counts for Oregon highways in the Scenic Area. The I-84 Sandy River Bridge is by far the most heavily traveled entrance to the Gorge. Other sites reviewed, except the Reynolds property, were each several miles from the western gateway. Their locations diminished the orientation/gateway concept and would allow arriving visitors to bypass several noteworthy sites before reaching a point of orientation.

Criteria #9. The cost of development should be considered in selecting a gateway/interpretive center site.

Comments:

Several factors effect the cost of development for specific parcels. Rooster Rock State Park and the ODOT site are the only two already in public ownership; the remaining sites require private land acquisition. Other factors considered include: the extent of site grading required; interchange and roadway improvements; and demolition costs (Bridal Veil site).

Again, the ODOT parcel emerged as the most cost-effective to develop, given the information available.

Criteria #10. The site selected should be highly visible from heavily traveled routes in the Gorge.

Comments:

As noted in the Criteria #8 comments above, the west entrance to the Gorge on I-84 is the most heavily used; a gateway/interpretive center on the ODOT site would be highly visible to travelers using this route.

The other sites reviewed are highly visible from I-84 as well. However, the Reynolds and Rooster Rock sites require eastbound travelers to cross the freeway; the Dodson and Bridal Veil sites have awkward and limited freeway access.

Criteria #11. A gateway/interpretive center site should offer opportunities to link to other areas in the Gorge, as well as other regional destinations. (i.e., tourist attractions, features, facilities).

Comments:

The ODOT site is an ideal location to orient visitors to other features, attractions and facilities in the Gorge. Its location at the primary west entrance to the Scenic Area and direct connection to the Historic Highway are strong points. The site offers opportunities to promote the Mount Hood Loop, as well as other routes and destinations in Washington and Oregon.

Criteria #12. The selected site should display congruity with the theme(s) of a gateway/interpretive center and with other related facilities in the Gorge.

Comments:

Although the Committee identified this Criteria, it proved difficult to apply to any site without additional information. A theme for this and other proposed interpretive facilities has not been determined as of this writing.

However, the ODOT site and vicinity offers adequate land area, diverse landforms and water features. These resources should provide numerous design options and opportunities to insure congruity with selected interpretive themes.

Criteria #13. The selected gateway/orientation/interpretive center site should be close to destinations and tourist facilities outside the Scenic Area boundary.

Comments:

The ODOT site location offers proximity to numerous tourist facilities within the Portland Metropolitan Area. Nearby Troutdale, as well as Gresham, Wood Village, Fairview and Portland, offer fueling stations, overnight accommodations, restaurants and other services.

Criteria #14. Micro-climatic conditions should be considered in the site selection. Sites in more exposed, windy or heavily shaded areas should be avoided; conditions which enhance visitor experiences and extend seasonal use should be sought.

Comments:

In general, sites further east experience harsher winds and more snow and ice than those near the west edge of the Scenic Area. The ODOT site appears well situated in this respect. Some members suggested a weather-road condition service (for inclement weather and wind conditions for wind surfers) as part of a gateway center. This type of service could serve to improve off-season travel in the Gorge.

GATEWAY/INTERPRETIVE CENTER CONTENTS

A gateway interpretive center may house a variety of exhibits, attractions and services. The Committee as a whole specified certain contents in the concept statement. In addition, a contents subcommittee developed a more detailed list of interpretive facility components. The group noted that future limitations may dictate development of certain components at other Gorge interpretive centers.

02/10/88
MH/sec/1067M

MAJOR COMPONENTS OF AN ORIENTATION/INTERPRETIVE CENTER

STAFFED INFORMATION COUNTER (With Volunteers
Assisting)

HISTORICAL DISPLAYS (Emphasize Local Areas)

IDENTIFICATION OF BEST VISTA POINTS (Maps -
Guides)

SCHOOL GROUP OPPORTUNITIES

AUDIO/VISUAL AIDS WHEREVER POSSIBLE (Varied
and Flexible)

ART EXHIBITS

GEOLOGY

PLANT/ANIMAL/CLIMATE TRANSITIONS ----
PROGRESSIONS THROUGH THE GORGE

LIVE EXHIBITS/DEMONSTRATIONS (History,
Nature, Art)

RELATIONSHIP OF HUMANKIND TO NATURE

MULTI-PURPOSE ROOM

COLUMBIA RIVER

RECREATION OPPORTUNITIES

WILDFLOWER DISPLAYS (Herbal, Dry, Rare and
Unique)

INTEGRATION OF BUILDING WITH NATURAL
LANDSCAPE

NATIVE AMERICAN INFORMATION

AMENITIES: Restrooms
Snack Bar
Gift Shop

HISTORIC COLUMBIA RIVER HIGHWAY

INFORMATION COUNTER ELEMENTS

STAFFED (With Volunteers Assisting)

MAPS

BOOKS (Guide)

GUIDES TO: Petroglyphs
 Views
 Falls
 Restaurants
 Lodging
 Trails
 Parks
 Fishing
 Wildlife/Plants
 Geological Attractions
 Dams and Related Facilities

TOUR PLANNING SERVICES

BROCHURES

NATIONAL SCENIC AREA RULES AND REGULATIONS:

Safety
Courtesy
Fire Prevention
Plant and Animal Protection

MT. HOOD LOOP AND OTHER SUGGESTED ROUTES

HISTORICAL DISPLAYS

LOCAL MULTNOMAH COUNTY: Pioneers
 Fishwheels/Canneries
 Lewis and Clark
 Native American Settlement

NATURAL RESOURCE UTILIZATION: Timber/Logging
 Fish
 Agriculture

LEWIS and CLARK EXPEDITIONS

OTHER EXPEDITIONS AND EXPLORATION HISTORY

VISTAS

PHOTOS and ART OF VARIOUS GORGE VIEWS (Identified)

RELIEF MAP, TOPOGRAPHICAL

PANORAMA

ART

1. TOURING EXHIBIT AREA (non-sales) IN COOPERATION WITH AREA MUSEUMS
2. PERMANENT ART INTEGRATED WITH THEMES OF CENTER (regional artists)

GEOLOGY

FLOODS

ICE AGE

VOLCANIC ACTIVITY

TROUTDALE GRAVEL

COLUMNAR BASALT

BRIDGE OF THE GODS

(Auto-visual displays to demonstrate
geological activity)

(Relate Native American myths/legends
to bridge, floods)

LIVE EXHIBITS and DEMONSTRATIONS

PIONEER SKILLS: Candle-dipping
 Trapping
 Black Powder Loading
 Shake Splitting
 Etc.

NATIVE AMERICAN SKILLS: Canoes
 Salmon
 Teepee/Shelter
 Etc.

(An Outdoor Demonstration Area is Important)

USE OF PLANT MATERIALS

RELATIONSHIP OF HUMANKIND TO NATURE

HOW HUMANS HAVE ADAPTED TO GORGE FOR PAST (10,000) YEARS

HOW HUMANS HAVE MODIFIED THE GORGE AND RIVER (Adapted Gorge within the past 100 years)

EFFECT OF GORGE PROVIDING ACCESS ROUTE THROUGH CASCADE RANGE

AESTHETICS, FOOD SUPPLY AND TEMPERATE CLIMATE INFLUENCING SETTLEMENT AND SPIRITUAL/CULTURAL VALUES

MULTI-PURPOSE ROOM

SCREEN AND SOUND SYSTEM

AUDIO-VISUAL ROOM

FLEXIBLE SEATING

PODIUM/PLATFORM

KITCHEN

(Should connect to outdoor demonstrations area)

COLUMBIA RIVER

ORIGIN and FLOW

FULL SCOPE OF COLUMBIA BASIN

TRIBUTARIES: Sandy Gorge, Etc.

Note: The Corps of Engineers may have these adequately covered:

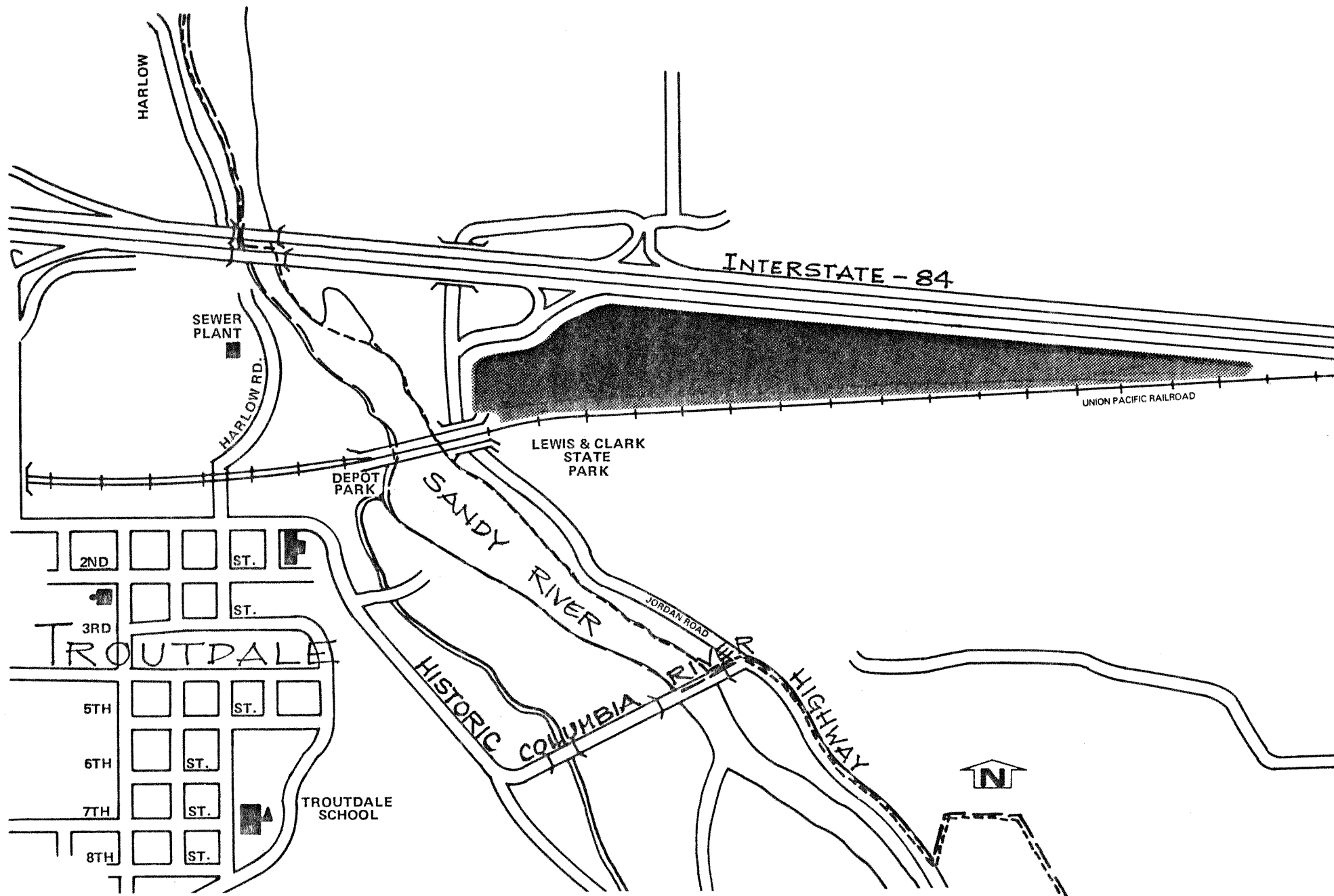
HYDROELECTRIC SYSTEM

LOCKS

FISH

Future Work of the Committee:

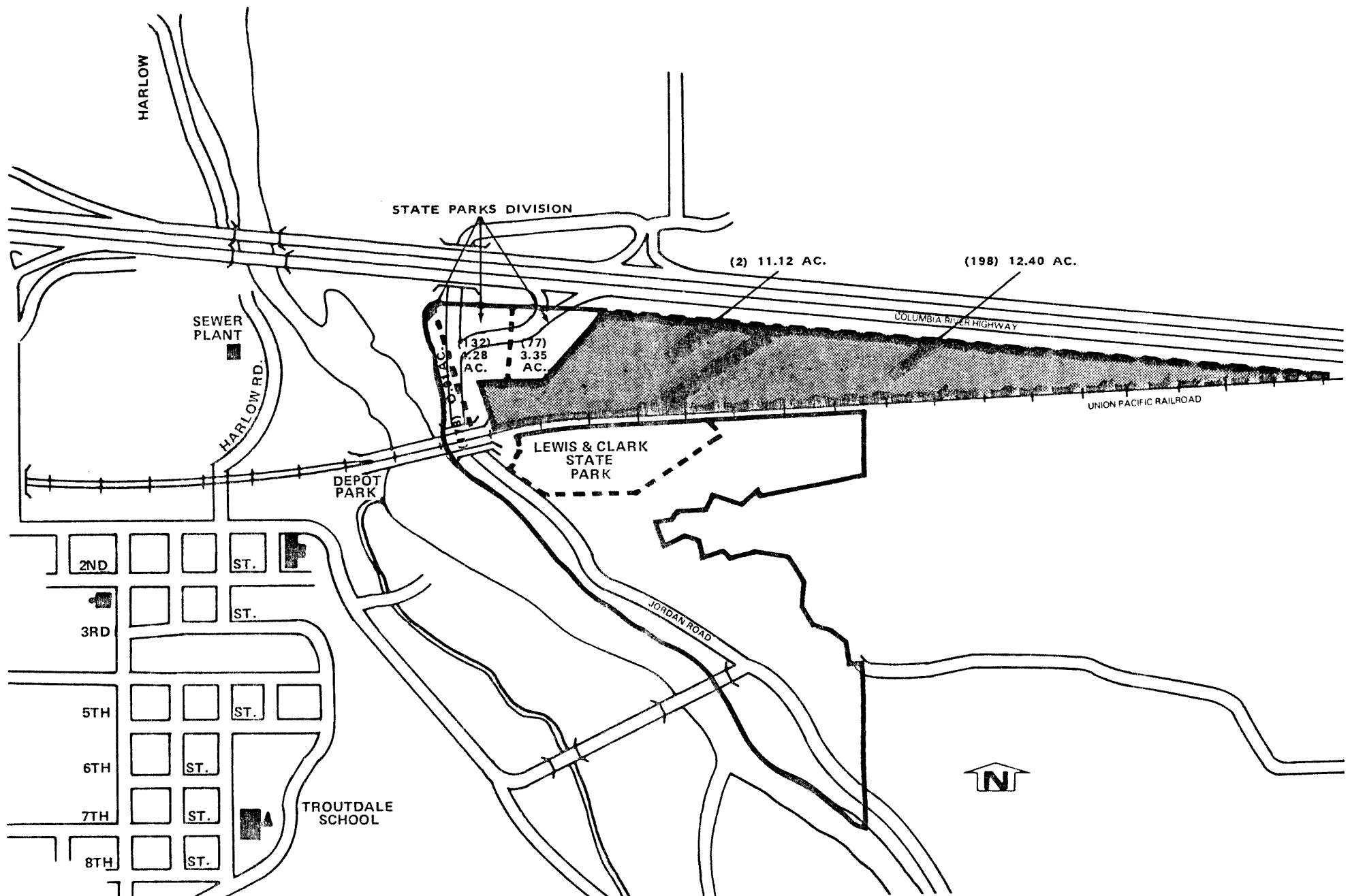
The future direction of the committee is unclear at this juncture. The group may evolve into a steering committee/advisory board guiding and reviewing the design and construction of a gateway interpretive center. Staff and committee members will prepare suggestions for the Board of County Commissioners. The mission and focus is in the process of redefinition and elaboration to maximize the group's effectiveness and maintain the interest and momentum generated thus far and to continue with the planning process.






LEGEND

- CITY LIMITS
- METRO URBAN GROWTH BOUNDARY
- SITE

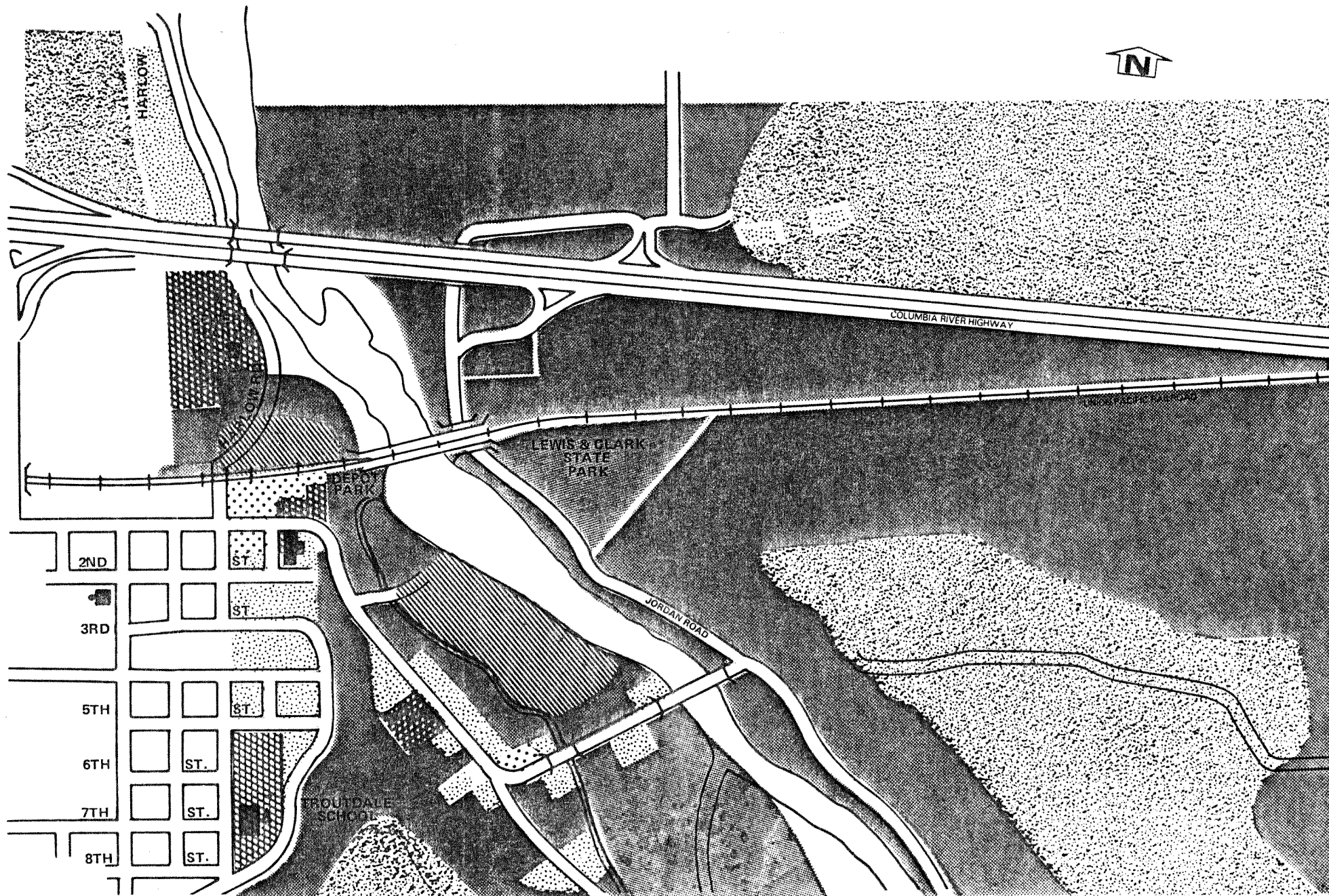
**EAST TROUTDALE SITE
PROJECT LOCATION**



LEGEND

-  TAX LOT LINES
-  RIGHT-OF-WAY REQUIRED
-  LEWIS AND CLARK STATE PARK

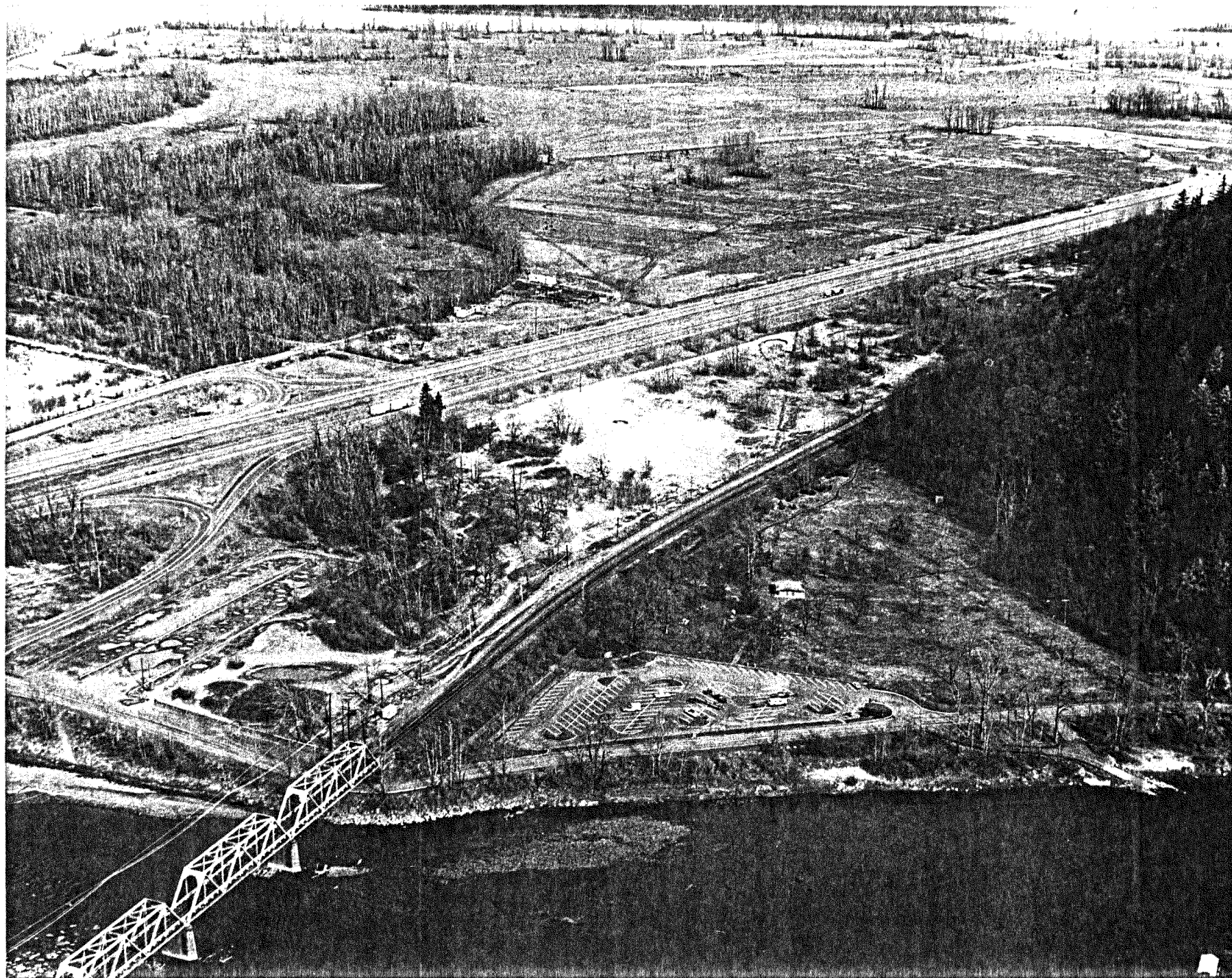
EAST TROUTDALE SITE



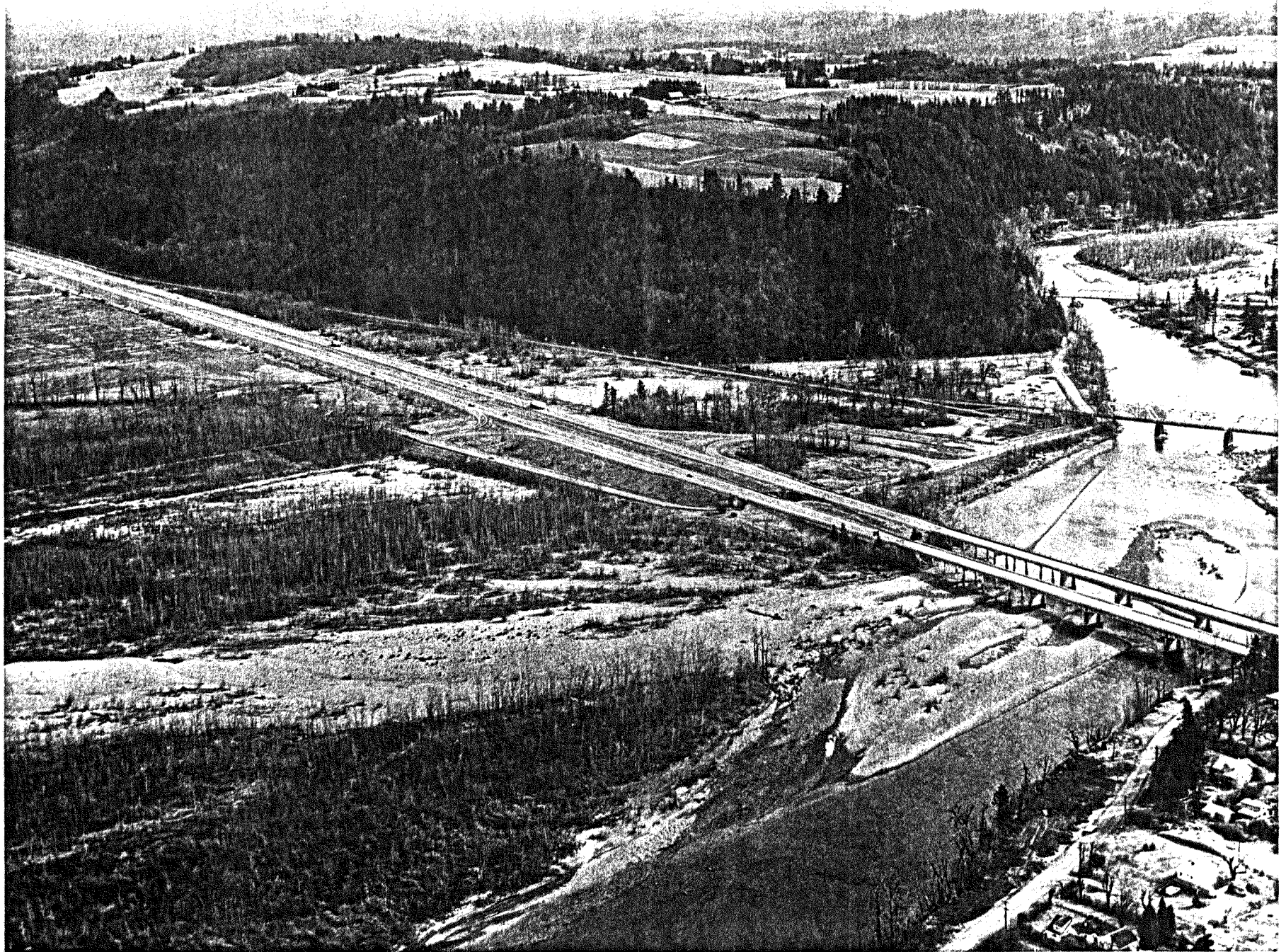
LEGEND

	RESIDENTIAL
	COMMERCIAL
	INDUSTRIAL
	PARKS / OPEN SPACE/WOODED
	PUBLIC SERVICE/INSTITUTIONAL
	AGRICULTURAL/GRAZING

EAST TROUTDALE SITE GENERALIZED EXISTING LAND USE



AERIAL VIEW LOOKING NORTHEAST



AERIAL VIEW LOOKING SOUTHEAST