

# **The State of Solid Waste in Unincorporated Multnomah County**

**September 10, 2013**



**MULTNOMAH  
COUNTY**

# **Why Does Multnomah County Care About Solid Waste?**

ORS 459A

~

DEQ Administrative Rules Division 90 –  
Recycling and Waste Collection

~

Metro Code Chapter 5.10

~

Metro Regional Solid Waste  
Management Plan (RSWMP)

# Background

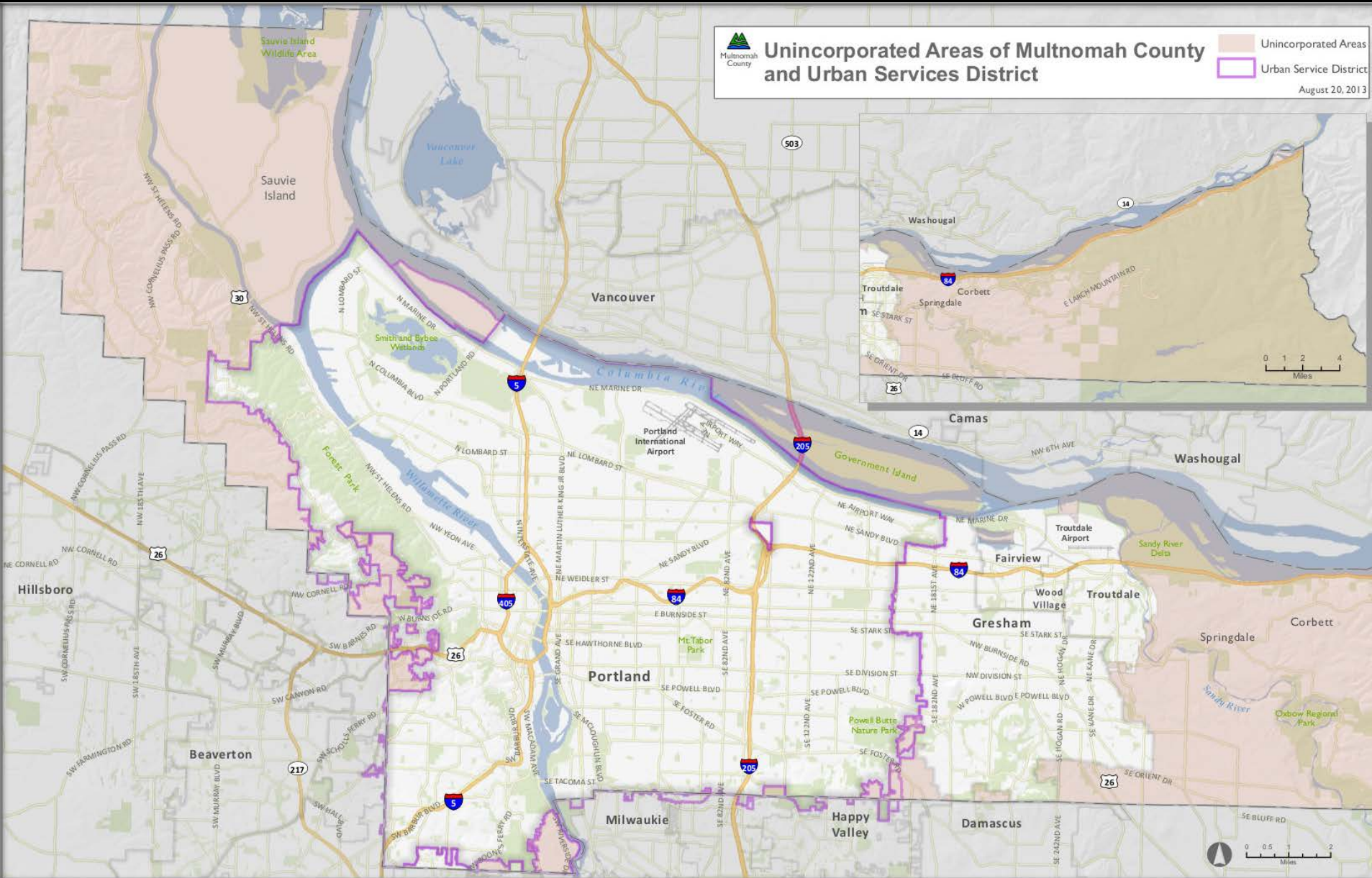
- Multnomah County is the only County in the Metro region that does not regulate solid waste
- Most people in Multnomah County live in an incorporated jurisdiction where the city regulates solid waste
- In July 2012 we received funding from Metro to investigate how the County could implement a Solid Waste Program in unincorporated areas



# Unincorporated Areas of Multnomah County and Urban Services District

Unincorporated Areas  
Urban Service District

August 20, 2013



# Existing Conditions

- Regulatory Requirements
- Customer Satisfaction Survey
- Meetings with haulers and survey
  - Levels of service
  - Service areas
- Regulatory Scenarios

# **Metro Regional Service Standards**

## **Residential Customers**

- Ensure that customers have at least one (1) recycling container
- Weekly curbside pickup:
  - Standard recyclable materials (paper, metal, plastic)
  - Glass (in a separate container)
  - Used motor oil (single family only)
  - Yard debris (urban only)
- Provide educational materials about the opportunity to recycle four (4) times per year
- For new customers, haulers provide information on types of materials collected and collection schedules

# **Metro Business Recycling Requirement**

- Must source separate standard recyclables
- Provide recycling containers to employees in work areas
- Co-locate signs with accurate recycling instructions next to recycling containers
- Provide educational materials at least four (4) times per year
- For new customers, haulers provide information on types of materials collected and collection schedules

# Topline Results from Customer Survey

In partnership with OpinionWorks, December 2012

Question	Residential	Businesses
Receive curbside <b>trash</b> collection	83 %	82 %
Receive curbside <b>recycling</b> collection	96 %	84 %

Question	Res. Total	Business
<b>Very Satisfied</b>	69 %	79 %
<b>Somewhat Satisfied</b>	17 %	14 %



# Current Service Levels

Area	East County	East Urban	Portland	West Hills	Sauvie Island
Recycling	weekly	weekly	weekly	EOW	EOW
Glass	weekly	weekly	weekly	EOW	depot
Motor Oil	weekly	weekly	weekly	EOW	EOW
Garbage	weekly	weekly	EOW	weekly	weekly
Yard Debris	subscription	Sub / NO	weekly	Sub / NO	not offered

# Program Scenarios

## Residential Collection

### Solid Waste Regulation Program Scenarios



**ADMINISTRATIVE BURDEN**

Program Type	Service Boundary Extension	License	Contracting	Franchise
Compliance	Partial Compliance with RSWMP	In Full Compliance with RSWMP		

# **Recommendation**

## **License haulers in unincorporated areas of the County**

- Complies with State and Metro requirements
- Minimizes impact to residents, haulers and County operations

# County Level of Effort

Annual License Renewal

Annual Reporting

Outreach & Education

Enforcement

---

~ 0.25 FTE

# **Overview of Proposed Licensing System**

## **Residential and Commercial Collection**

- All haulers in unincorporated Multnomah County would be required to obtain license annually
- Excludes incorporated jurisdictions and unincorporated areas within an urban service district
- The license agreement would stipulate the minimum service standards
- License fees would cover the cost of the County's administration
- Enforcement would be complaint-driven
- No review or regulation of rates

# Next Steps

- Adopt IGA with Metro that will fund the startup of the program (\$30K annually x 3 yr)
- Develop code & administrative rules
- Outreach to haulers and customers
- Adopt code (December 2013)
- Implement new code and regulation (January 2014)